

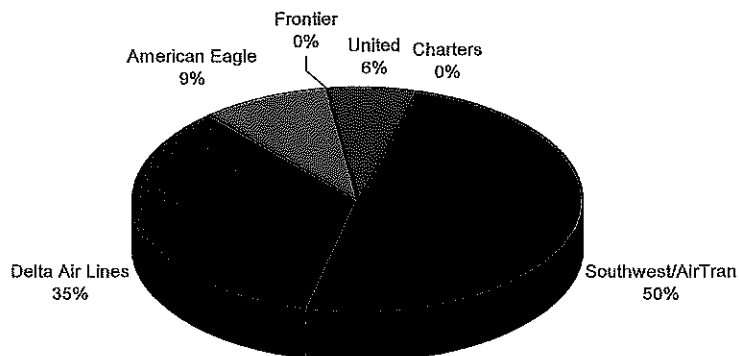
**BISHOP INTERNATIONAL AIRPORT AUTHORITY  
AIRLINE PASSENGER COMPARISON  
CALENDAR YEARS 2013 AND 2014**

ENPLANEMENTS	SOUTHWEST/AIRTRAN			DELTA			AMERICAN EAGLE		
	2013	2014	% Change	2013	2014	% Change	2013	2014	% Change
January	10,849	15,127	39.43%	14,637	11,517	-21.32%	3,081	2,940	-4.58%
February	12,708	17,765	39.79%	15,000	11,608	-22.61%	2,845	3,256	14.45%
March	16,276			14,790			2,745		
April	9,367			13,637			2,983		
May	9,237			13,864			3,209		
June	10,561			14,557			3,223		
July	12,596			14,662			3,386		
August	13,950			15,088			3,431		
September	11,476			14,419			3,164		
October	13,881			15,558			3,323		
November	13,931			15,250			2,952		
December	15,403			14,394			3,163		
Through February	23,557	32,892	39.63%	29,637	23,125	-21.97%	5,926	6,196	4.56%

ENPLANEMENTS	FRONTIER			UNITED			CHARTERS		
	2013	2014	% Change	2013	2014	% Change	2013	2014	% Change
January	0	0	N/A	2,080	1,928	-7.31%	0	0	N/A
February	0	0	N/A	2,155	2,302	6.82%	265	0	N/A
March	0	0		2,555			158		
April	0	0		2,155			137		
May	0	0		2,895			0		
June	0	0		3,145			0		
July	0	0		3,119			0		
August	0	0		3,246			159		
September	0	0		2,687			0		
October	0	0		2,873			158		
November	0	0		2,784			0		
December	0	0		2,921			0		
Through February	0	0	N/A	4,235	4,230	-0.12%	265	0	N/A

**ENPLANEMENT SHARE BY AIRLINE  
Calendar Year 2014**



	2013	TOTAL	
		2014	% Change
January	30,647	31,512	2.82%
February	32,973	34,931	5.94%
March	36,524	0	
April	28,279	0	
May	29,205	0	
June	31,486	0	
July	33,763	0	
August	35,874	0	
September	31,746	0	
October	35,793	0	
November	34,917	0	
December	35,881	0	
Through February	63,620	66,443	4.44%
Total Year	397,088	66,443	

Southwest/AirTran
  Delta Air Lines
  American Eagle
  Frontier
  United
  Charters

**BISHOP INTERNATIONAL AIRPORT AUTHORITY  
AIRLINE LOAD FACTOR ANALYSIS**

February-14

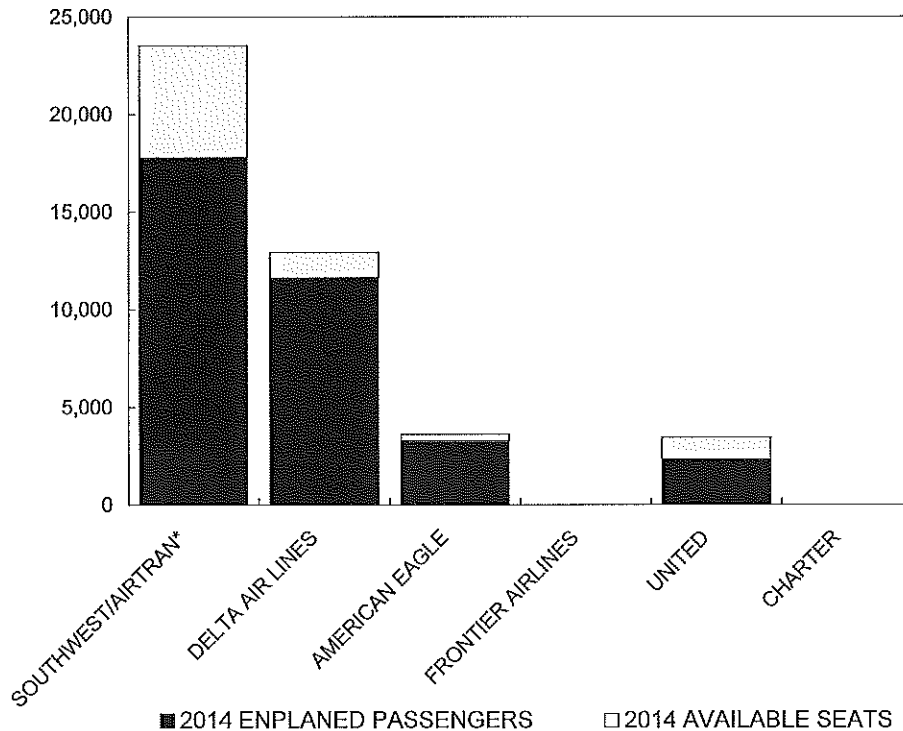
2013

2014

AIRLINE	2013			2014		
	AVAILABLE SEATS	ENPLANED PAX	LOAD FACTOR	AVAILABLE SEATS	ENPLANED PAX	LOAD FACTOR
SOUTHWEST/AIRTRAN*	14,040	12,708	90.51%	23,517	17,765	75.54%
DELTA AIR LINES	16,594	15,000	90.39%	12,937	11,608	89.73%
AMERICAN EAGLE	3,466	2,845	82.08%	3,600	3,256	90.44%
FRONTIER AIRLINES	0	0	0.00%	0	0	0.00%
UNITED	3,449	2,155	62.48%	3,448	2,302	66.76%
CHARTER	268	265	98.88%	0	0	N/A
<b>ALL AIRLINES</b>	<b>37,817</b>	<b>32,973</b>	<b>87.19%</b>	<b>43,502</b>	<b>34,931</b>	<b>80.30%</b>

\* Southwest's enplaned passenger statistics does not include thru passengers. As a result, the enplaned passenger and load factor statistics are artificially low.

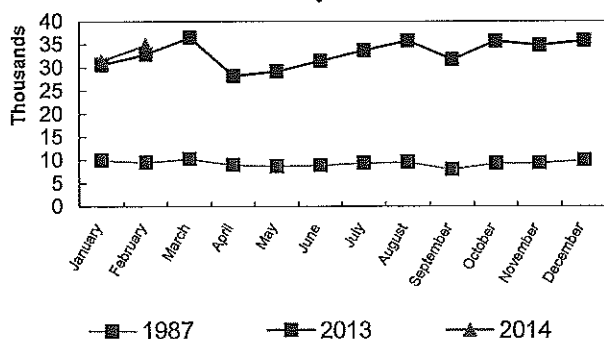
**Enplanements vs Available Seats  
Current Month**



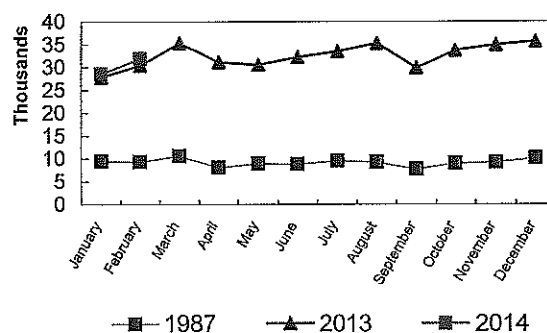
**BISHOP INTERNATIONAL AIRPORT  
PASSENGER STATISTICAL COMPARISON  
FOR THE YEARS 1987, 2013, 2014**

ENPLANED PASSENGERS				% CHANGE	% CHANGE
	1987	2013	2014	1987/2014	2013/2014
January	10,008	30,647	31,513	214.88%	2.83%
February	9,544	32,973	34,931	266.00%	5.94%
March	10,287	36,524			
April	8,967	28,279			
May	8,685	29,205			
June	8,891	31,486			
July	9,372	33,763			
August	9,586	35,874			
September	8,038	31,746			
October	9,350	35,793			
November	9,402	34,917			
December	10,010	35,881			
Total thru February	19,552	63,620	66,444	239.83%	4.44%
Total for Year	112,140	397,088	66,444		

**ENPLANEMENT COMPARISON  
Pre-Authority vs 2013 & 2014**



**DEPLANEMENT COMPARISON  
Pre-Authority vs 2013 & 2014**



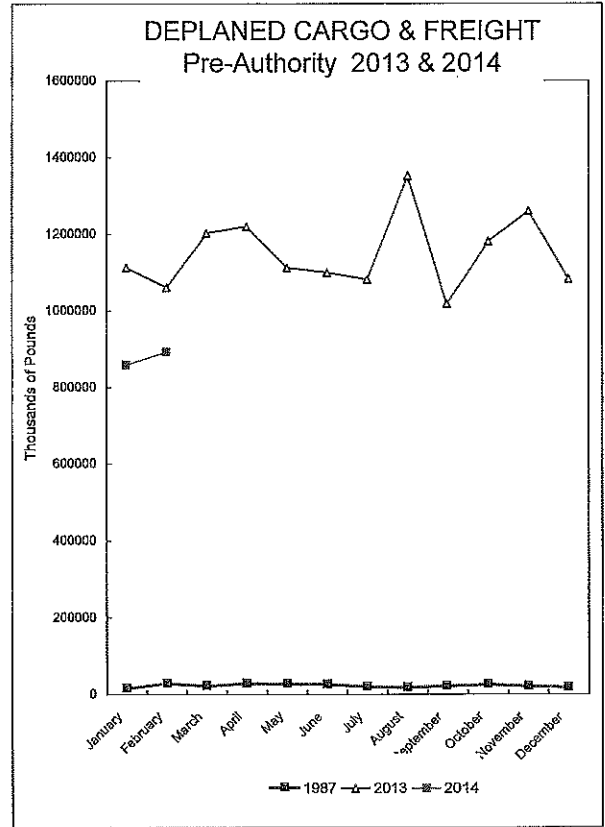
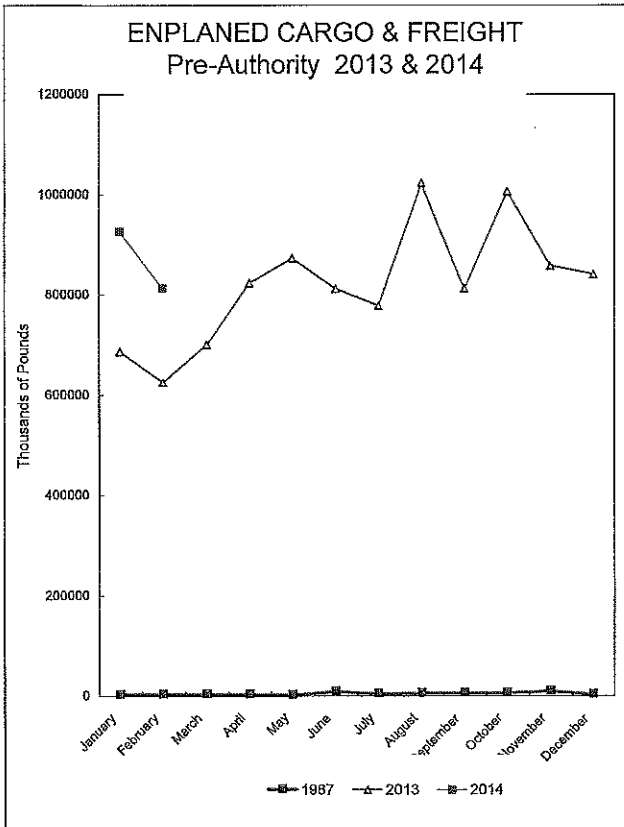
DEPLANED PASSENGERS				% CHANGE	% CHANGE
	1987	2013	2014	1987/2014	2013/2014
January	9,542	27,892	28,602	199.75%	2.55%
February	9,380	30,477	31,948	240.60%	4.83%
March	10,646	35,406			
April	8,139	31,199			
May	8,969	30,630			
June	8,795	32,338			
July	9,592	33,562			
August	9,331	35,312			
September	7,740	30,013			
October	9,005	33,799			
November	9,235	34,996			
December	10,114	35,711			
Total thru February	18,922	58,369	60,550	220.00%	3.74%
Total for Year	110,488	391,335	60,550		

Total all current month	38,474	121,989	126,994
Total all for the year	222,628	788,423	126,994

## BISHOP INTERNATIONAL AIRPORT AIR CARGO AND FREIGHT COMPARISON Pre-Authority(1987) 2013 & 2014

TOTAL AIR CARGO AND FREIGHT

	ENPLANED CARGO & FREIGHT					DEPLANED CARGO & FREIGHT				
	1987	2013	2014	% Change 87-2014	% Change 2013-2014	1987	2013	2014	% Change 87-2014	% Change 2013-2014
January	3,660	687,353	926,679	25219.10%	34.82%	16,557	1,113,247	859,883	5093.47%	-22.76%
February	3,582	626,624	814,028	22625.52%	30.11%	30,397	1,061,183	893,882	2840.69%	-15.77%
March	4,268	701,143		-100.00%	-100.00%	23,013	1,203,524		-100.00%	-100.00%
April	3,747	824,495		-100.00%	-100.00%	30,094	1,220,415		-100.00%	-100.00%
May	3,219	873,697		-100.00%	-100.00%	28,459	1,111,835		-100.00%	-100.00%
June	9,901	812,942		-100.00%	-100.00%	27,135	1,099,705		-100.00%	-100.00%
July	5,316	778,106		-100.00%	-100.00%	21,325	1,081,328		-100.00%	-100.00%
August	6,299	1,023,788		-100.00%	-100.00%	19,064	1,352,318		-100.00%	-100.00%
September	6,509	812,578		-100.00%	-100.00%	23,494	1,018,660		-100.00%	-100.00%
October	7,148	1,006,432		-100.00%	-100.00%	26,707	1,181,261		-100.00%	-100.00%
November	10,254	858,131		-100.00%	-100.00%	22,817	1,260,892		-100.00%	-100.00%
December	3,905	840,598		-100.00%	-100.00%	19,423	1,083,208		-100.00%	-100.00%
<b>Total thru February</b>	<b>7,242</b>	<b>1,312,977</b>	<b>1,740,707</b>	<b>23936.27%</b>	<b>32.58%</b>	<b>46,954</b>	<b>2,174,430</b>	<b>1,753,765</b>	<b>3635.07%</b>	<b>-19.35%</b>
<b>Annual Total</b>	<b>67,808</b>	<b>9,844,887</b>	<b>1,740,707</b>			<b>288,485</b>	<b>13,787,576</b>	<b>1,753,765</b>		



## FEDEX

	ENPLANED CARGO & FREIGHT					DEPLANED CARGO & FREIGHT				
	1987	2013	2014	% Change 87-2014	% Change 2013-2014	1987	2013	2014	% Change 87-2014	% Change 2013-2014
January	0	650,713	896,188	N/A	37.72%	0	1,090,803	839,528	N/A	-23.04%
February	0	591,682	782,855	N/A	32.31%	0	1,042,521	872,847	N/A	-16.28%
March	0	665,983				0	1,180,073			
April	0	786,924				0	1,198,554			
May	0	832,556				0	1,091,313			
June	0	777,890				0	1,080,555			
July	0	739,136				0	1,060,037			
August	0	973,875				0	1,328,479			
September	0	779,857				0	995,179			
October	0	968,215				0	1,148,410			
November	0	819,954				0	1,231,976			
December	0	786,698				0	1,059,604			
Total thru February	0	1,242,396	1,679,043	N/A	35.15%	0	2,133,324	1,712,375	N/A	-19.73%

## DELTA/ASA

	ENPLANED CARGO & FREIGHT					DEPLANED CARGO & FREIGHT				
	1987	2013	2014	% Change 87-2014	% Change 2013-2014	1987	2013	2014	% Change 87-2014	% Change 2013-2014
January	0	23	98	N/A	326.09%	0	283	210	N/A	-25.80%
February	0	20	38	N/A	90.00%	0	275	267	N/A	-2.91%
March	0	0				0	0			
April	0	90				0	190			
May	0	22				0	47			
June	0	0				0	92			
July	0	20				0	479			
August	0	109				0	308			
September	0	184				0	101			
October	0	132				0	293			
November	0	294				0	336			
December	0	119				0	79			
Total thru February	0	43	136	N/A	216.28%	0	558	477	N/A	-14.52%

## AMERICAN EAGLE/CONN

	ENPLANED CARGO & FREIGHT					DEPLANED CARGO & FREIGHT				
	1987	2013	2014	% Change 87-2014	% Change 2013-2014	1987	2013	2014	% Change 87-2014	% Change 2013-2014
January	0	0	1	N/A	N/A	0	516	29	N/A	-94.38%
February	0	0	6	N/A	N/A	0	218	251	N/A	15.14%
March	0	0				0	427			
April	0	0				0	292			
May	0	0				0	0			
June	0	0				0	324			
July	0	0				0	0			
August	0	0				0	171			
September	0	0				0	593			
October	0	0				0	0			
November	0	980				0	432			
December	0	0				0	464			
Total thru February	0	0	7	N/A		0	734	280		-61.85%

## Northwest

	ENPLANED CARGO & FREIGHT					DEPLANED CARGO & FREIGHT				
	1987	2013	2014	% Change 87-2014	% Change 2013-2014	1987	2013	2014	% Change 87-2014	% Change 2013-2014
January	120	0	0	N/A	N/A	837	0	0	N/A	N/A
February	310	0	0	N/A	N/A	1,649	0	0	N/A	N/A
March	256	0	0			2,098	0	0		
April	0	0	0			0	0	0		
May	0	0	0			0	0	0		
June	0	0	0			0	0	0		
July	0	0	0			0	0	0		
August	0	0	0			0	0	0		
September	0	0	0			0	0	0		
October	0	0	0			0	0	0		
November	0	0	0			0	0	0		
December	0	0	0			0	0	0		
Total thru February	430	0	0	-100.00%	N/A	2,486	0	0	-100.00%	N/A

## CSA Air, Inc.

	ENPLANED CARGO & FREIGHT					DEPLANED CARGO & FREIGHT				
	1987	2013	2014	% Change 87-2014	% Change 2013-2014	1987	2013	2014	% Change 87-2014	% Change 2013-2014
January	0	36,617	30,392	N/A	-17.00%	0	21,645	20,116	N/A	-7.06%
February	0	33,922	31,129	N/A	-8.23%	0	18,169	20,517	N/A	12.92%
March	0	35,160	0			0	23,024	0		
April	0	37,481	0			0	21,379	0		
May	0	41,119	0			0	20,475	0		
June	0	35,052	0			0	18,734	0		
July	0	38,950	0			0	20,812	0		
August	0	49,804	0			0	23,360	0		
September	0	32,537	0			0	22,787	0		
October	0	38,085	0			0	32,558	0		
November	0	36,903	0			0	28,148	0		
December	0	53,781	0			0	23,061	0		
Total thru February	0	70,539	61,521	N/A	-12.78%	0	39,814	40,633	N/A	2.06%

## PRIOR CARRIERS

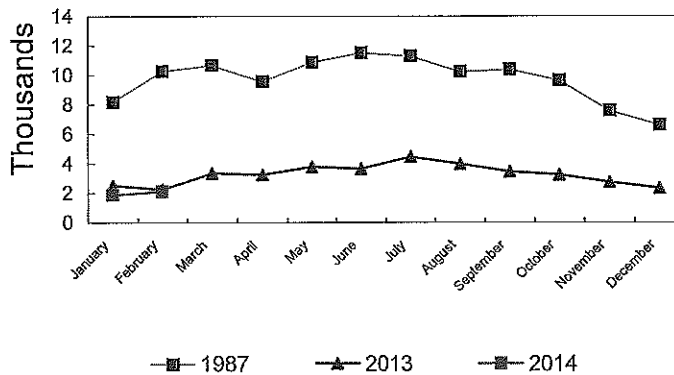
	ENPLANED CARGO & FREIGHT					DEPLANED CARGO & FREIGHT				
	1987	2013	2014	% Change 87-2014	% Change 2013-2014	1987	2013	2014	% Change 87-2014	% Change 2013-2014
January	3,540	0	0	N/A	N/A	15,720	0	0	N/A	N/A
February	3,272	0	0	N/A	N/A	28,748	0	0	N/A	N/A
March	4,012	0	0			20,915	0	0		
April	3,747	0	0			30,094	0	0		
May	3,219	0	0			28,459	0	0		
June	9,901	0	0			27,135	0	0		
July	5,316	0	0			21,325	0	0		
August	6,299	0	0			19,064	0	0		
September	6,509	0	0			23,494	0	0		
October	7,148	0	0			26,707	0	0		
November	10,254	0	0			22,817	0	0		
December	3,905	0	0			19,423	0	0		
Total thru February	6,812	0	0	N/A	N/A	44,468	0	0	N/A	N/A

# OPERATIONS STATISTICAL COMPARISON

FOR YEARS 1987, 2013 & 2014

	1987 OPERATIONS	2013 OPERATIONS	2014 OPERATIONS	CHANGE 1987/2014	CHANGE 2013/2014
January	8,177	2,514	<b>1,900</b>	-76.76%	-24.42%
February	10,270	2,249	<b>2,112</b>	-79.44%	-6.09%
March	10,677	3,342			
April	9,562	3,237			
May	10,870	3,782			
June	11,514	3,653			
July	11,296	4,450			
August	10,240	3,976			
September	10,389	3,451			
October	9,656	3,234			
November	7,592	2,739			
December	6,608	2,332			
<b>Total Through February</b>	<b>18,447</b>	<b>4,763</b>	<b>4,012</b>	<b>-78.25%</b>	<b>-15.77%</b>
<b>ANNUAL TOTAL</b>	<b>116,851</b>	<b>38,959</b>	<b>4,012</b>		

## OPERATIONS Pre-Authority vs 2013 & 2014



**BISHOP INTERNATIONAL AIRPORT  
AIR TRAFFIC RECORD 2014**

MONTH	ITINERANT AIRCRAFT					LOCAL AIRCRAFT			TOTAL OPERATIONS	CUMULATIVE OPERATIONS
	AIR CARRIER	AIR TAXI	GENERAL AVIATION	MILITARY	TOTAL ITINERANT	CIVILIAN	MILITARY	TOTAL LOCAL		
JANUARY	550	507	571	22	1,650	250	0	250	1,900	1,900
FEBRUARY	519	516	714	23	1,772	340	0	340	2,112	2,112
MARCH					0			0	0	0
APRIL					0			0	0	0
MAY					0			0	0	0
JUNE					0			0	0	0
JULY					0			0	0	0
AUGUST					0			0	0	0
SEPTEMBER					0			0	0	0
OCTOBER					0			0	0	0
NOVEMBER					0			0	0	0
DECEMBER					0	202	0	202	202	202
<b>TOTALS</b>	<b>1,069</b>	<b>1,023</b>	<b>1,285</b>	<b>45</b>	<b>3,422</b>	<b>792</b>	<b>0</b>	<b>792</b>	<b>4,214</b>	