

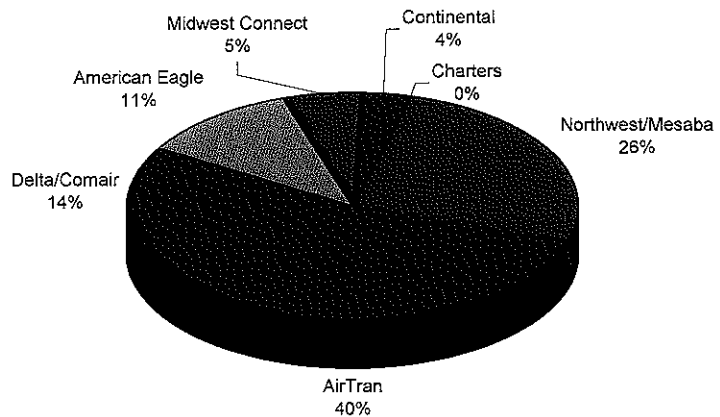
**BISHOP INTERNATIONAL AIRPORT AUTHORITY
AIRLINE PASSENGER COMPARISON
CALENDAR YEARS 2007 AND 2008**

ENPLANEMENTS:	NORTHWEST/MESABA			AIRTRAN			DELTA/COMAIR/ASA			AMERICAN EAGLE		
	2007	2008	% Change	2007	2008	% Change	2007	2008	% Change	2007	2008	% Change
January	11,584	12,291	6.10%	19,586	19,049	-2.74%	5,055	6,850	35.51%	3,455	5,916	71.23%
February	13,256	11,684	-11.86%	20,853	23,711	13.71%	5,446	5,909	8.50%	3,185	4,989	56.64%
March	20,531	16,416	-20.04%	22,840	23,928	4.76%	5,952	6,878	15.56%	3,488	5,691	63.16%
April	16,599	12,221	-26.38%	19,438	18,054	-7.12%	5,819	5,984	2.84%	3,598	5,068	40.86%
May	11,994	11,505	-4.08%	15,444	15,312	-0.85%	5,120	5,811	13.50%	5,121	5,066	-1.07%
June	12,309	11,542	-6.23%	15,665	15,362	-1.93%	5,807	6,677	14.98%	5,004	5,416	8.23%
July	12,672	11,752	-7.26%	17,557	16,037	-8.66%	5,800	7,073	21.95%	5,085	6,053	19.04%
August	12,099	10,856	-10.27%	17,795	16,205	-8.94%	5,951	6,833	14.82%	5,080	4,612	-9.21%
September	10,845			14,536			6,085			5,935		
October	11,028			17,086			6,012			6,325		
November	12,073			19,301			6,193			6,427		
December	12,503			19,882			5,444			5,836		
Through August	111,044	98,267	-11.51%	149,178	147,658	-1.02%	44,950	52,015	15.72%	34,016	42,811	25.86%

ENPLANEMENTS:	MIDWEST CONNECT			CONTINENTAL			CHARTERS		
	2007	2008	% Change	2007	2008	% Change	2007	2008	% Change
January	1,032	1,640	58.91%	916	1,340	46.29%	122	159	30.33%
February	1,005	1,642	63.38%	1,148	1,497	30.40%	0	0	N/A
March	1,185	2,565	116.46%	1,242	1,751	40.98%	0	0	N/A
April	1,569	2,794	78.08%	1,148	1,780	55.05%	163	159	-2.45%
May	1,518	2,895	90.71%	1,087	1,853	70.47%	0	0	N/A
June	1,770	3,137	77.23%	1,219	1,675	37.41%	0	0	N/A
July	1,927	2,948	52.98%	1,198	1,717	43.32%	0	0	N/A
August	2,271	2,646	16.51%	1,638	1,922	17.34%	0	0	N/A
September	1,816			925			157		
October	1,712			1,465			0		
November	1,741			1,460			149		
December	1,579			1,526			0		
Through August	12,277	20,267	65.08%	9,596	13,535	41.05%	285	318	N/A

**ENPLANEMENT SHARE BY AIRLINE
Calendar Year 2008**

Latest National Average -0.4% May-08
2008 National Trend May



	TOTAL		
	2007	2008	% Change
January	41,750	47,245	13.16%
February	44,893	49,432	10.11%
March	55,238	57,229	3.60%
April	48,334	46,060	-4.70%
May	40,284	42,442	5.36%
June	41,774	43,809	4.87%
July	44,239	45,580	3.03%
August	44,834	43,074	-3.93%
September	40,299	0	
October	43,628	0	
November	47,344	0	
December	46,770	0	
Through August	361,346	374,871	3.74%
Total Year	539,387	374,871	

- Northwest/Mesaba ■ AirTran ■ Delta/Comair
- American Eagle ■ Midwest Connect ■ Continental
- Charters

**BISHOP INTERNATIONAL AIRPORT AUTHORITY
AIRLINE LOAD FACTOR ANALYSIS**

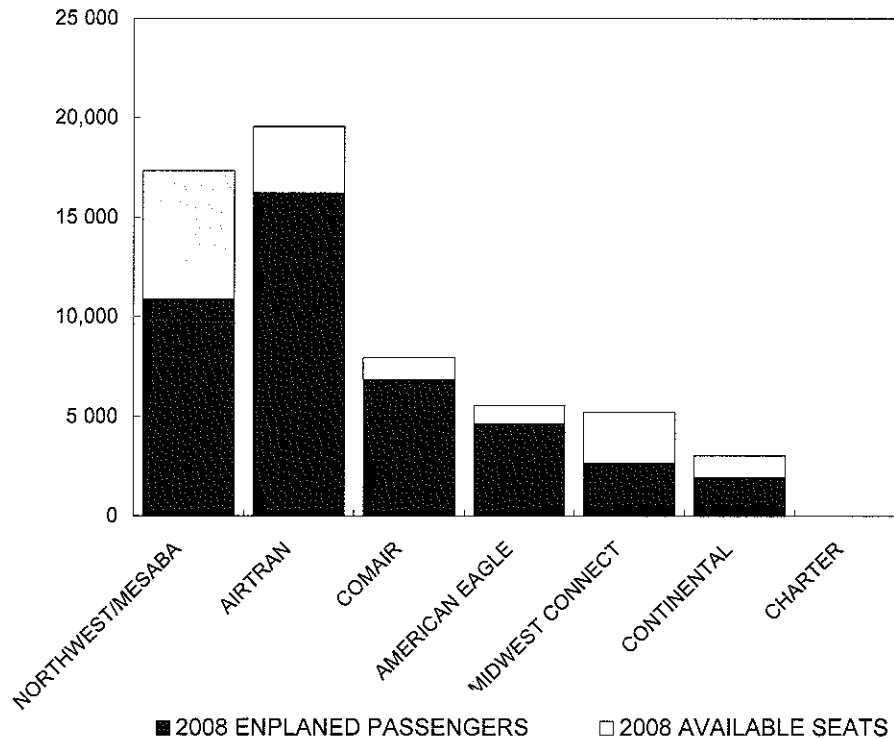
August-08

2007

2008

AIRLINE	2007			2008		
	AVAILABLE SEATS	ENPLANED PAX	LOAD FACTOR	AVAILABLE SEATS	ENPLANED PAX	LOAD FACTOR
NORTHWEST/MESABA	18,676	12,099	64.78%	17,334	10,856	62.63%
AIRTRAN	21,559	17,795	82.54%	19,549	16,205	82.89%
COMAIR	6,450	5,951	92.26%	7,940	6,833	86.06%
AMERICAN EAGLE	5,594	5,080	90.81%	5,554	4,612	83.04%
MIDWEST CONNECT	3,187	2,271	71.26%	5,200	2,646	50.88%
CONTINENTAL	2,204	1,638	74.32%	3,034	1,922	63.35%
CHARTER	0	0	N/A	0	0	N/A
ALL AIRLINES	57,670	44,834	77.74%	58,611	43,074	73.49%

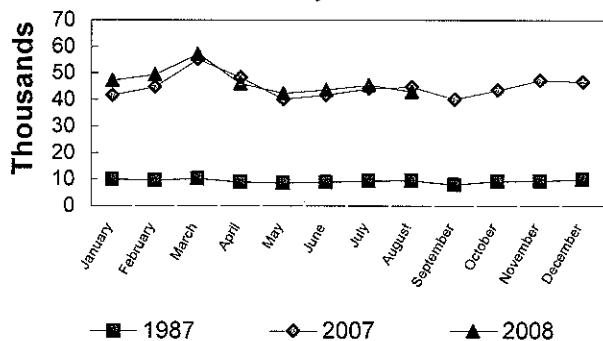
**Enplanements vs Available Seats
Current Month**



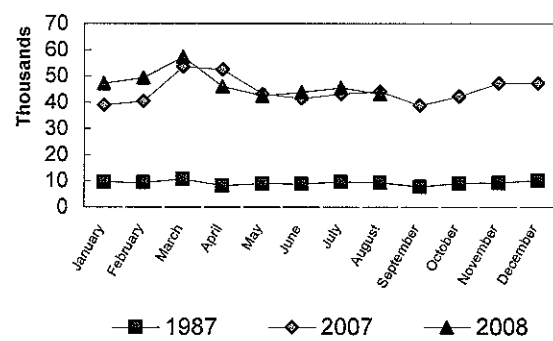
**BISHOP INTERNATIONAL AIRPORT
PASSENGER STATISTICAL COMPARISON
FOR THE YEARS 1987, 2007, 2008**

ENPLANED PASSENGERS				% CHANGE	% CHANGE
	1987	2007	2008	1987/2008	2007/2008
January	10,008	41,750	47,245	372.07%	13.16%
February	9,544	44,893	49,432	417.94%	10.11%
March	10,287	55,238	57,229	456.32%	3.60%
April	8,967	48,334	46,060	413.66%	-4.70%
May	8,685	40,284	42,442	388.68%	5.36%
June	8,891	41,774	43,809	392.73%	4.87%
July	9,372	44,239	45,580	386.34%	3.03%
August	9,586	44,834	43,074	349.34%	-3.93%
September	8,038	40,299			
October	9,350	43,628			
November	9,402	47,344			
December	10,010	46,770			
Total thru August	75,340	361,346	374,871	397.57%	3.74%
Total for Year	112,140	539,387	374,871		

**ENPLANEMENT COMPARISON
Pre-Authority vs 2007 & 2008**



**DEPLANEMENT COMPARISON
Pre-Authority vs 2007 & 2008**



DEPLANED PASSENGERS				% CHANGE	% CHANGE
	1987	2007	2008	1987/2008	2007/2008
January	9,542	39,038	41,948	339.61%	7.45%
February	9,380	40,531	44,852	378.17%	10.66%
March	10,646	53,615	55,515	421.46%	3.54%
April	8,139	52,500	52,171	541.00%	-0.63%
May	8,969	43,252	46,110	414.10%	6.61%
June	8,795	41,467	43,716	397.06%	5.42%
July	9,592	43,142	45,689	376.32%	5.90%
August	9,331	44,039	42,693	357.54%	-3.06%
September	7,740	38,844			
October	9,005	42,190			
November	9,235	47,179			
December	10,114	47,236			
Total thru August	74,394	357,584	372,694	400.97%	4.23%
Total for Year	110,488	533,033	372,694		

Total all current month	149,734	718,930	747,565
Total all for the year	222,628	1,072,420	747,565

**BISHOP INTERNATIONAL AIRPORT
AIR TRAFFIC RECORD 2008**

MONTH	ITINERANT AIRCRAFT				LOCAL AIRCRAFT				TOTAL OPERATIONS	CUMULATIVE OPERATIONS
	AIR CARRIER	AIR TAXI	GENERAL AVIATION	MILITARY	TOTAL ITINERANT	CIVILIAN	MILITARY	LOCAL		
JANUARY	1,099	1,209	1,017	8	3,333	1,628		1,628	4,961	4,961
FEBRUARY	986	1,152	1,049	16	3,203	1,288		1,288	4,491	9,452
MARCH	1,099	1,235	1,450	22	3,806	1,978		1,978	5,784	15,236
APRIL	977	1,287	1,652	17	3,933	2,374		2,374	6,307	21,543
MAY	865	1,303	1,637	20	3,825	1,786		1,786	5,611	27,154
JUNE	895	1,310	1,402	26	3,633	1,394	6	1,400	5,033	32,187
JULY	818	1,230	1,855	14	3,917	2,179		2,179	6,096	38,283
AUGUST	780	1,159	1,613	24	3,576	1,389		1,389	4,965	43,248
SEPTEMBER				0	0			0	0	0
OCTOBER				0	0			0	0	0
NOVEMBER				0	0			0	0	0
DECEMBER				0	0			0	0	0
TOTALS	7,519	9,885	11,675	147	29,226	14,016	6	14,022	43,248	

OPERATIONS STATISTICAL COMPARISON

FOR YEARS 1987, 2007 & 2008

	1987 OPERATIONS	2007 OPERATIONS	2008 OPERATIONS	CHANGE 1987/2008	CHANGE 2007/2008
January	8,177	4,383	4,961	-39.33%	13.19%
February	10,270	4,050	4,491	-56.27%	10.89%
March	10,677	6,672	5,784	-45.83%	-13.31%
April	9,562	5,732	6,307	-34.04%	10.03%
May	10,870	6,763	5,611	-48.38%	-17.03%
June	11,514	7,642	5,033	-56.29%	-34.14%
July	11,296	7,618	4,965	-56.05%	-34.83%
August	10,240	8,382			
September	10,389	7,591			
October	9,656	6,734			
November	7,592	5,804			
December	6,608	4,399			
Total Through August	82,606	51,242	37,152	-55.03%	-27.50%
ANNUAL TOTAL	116,851	75,770	37,152		

OPERATIONS Pre-Authority vs 2007 & 2008

