

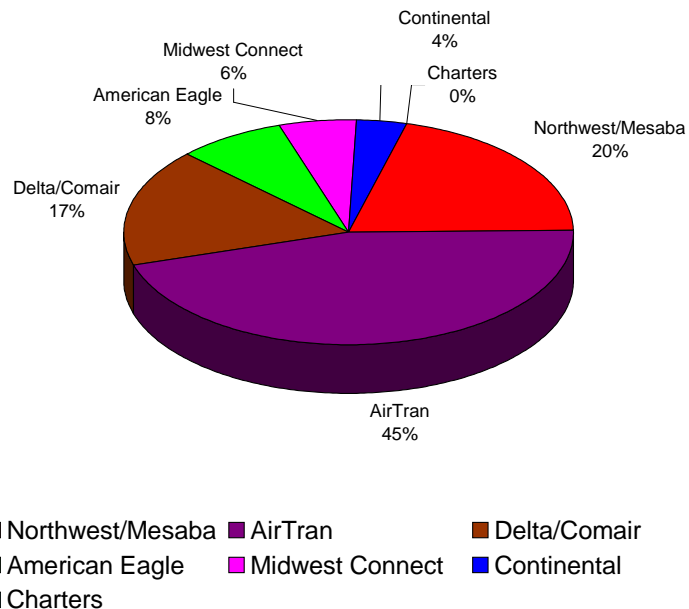
**BISHOP INTERNATIONAL AIRPORT AUTHORITY
AIRLINE PASSENGER COMPARISON
CALENDAR YEARS 2009 AND 2010**

ENPLANEMENTS	NORTHWEST/MESABA			AIRTRAN			DELTA/COMAIR/ASA			AMERICAN EAGLE		
	2009	2010	% Change	2009	2010	% Change	2009	2010	% Change	2009	2010	% Change
January	8,023	8,394	4.62%	17,933	18,533	3.35%	6,764	6,853	1.32%	3,364	3,093	-8.06%
February	7,456			18,386			7,379			3,283		
March	9,003			19,419			8,861			3,462		
April	7,254			16,913			8,470			3,581		
May	7,707			12,933			7,764			3,648		
June	8,316			14,002			9,475			3,752		
July	10,885			15,923			10,112			3,978		
August	9,893			16,231			9,870			3,631		
September	8,689			12,804			8,157			3,247		
October	8,565			16,129			9,570			3,710		
November	8,041			17,397			7,834			3,517		
December	8,444			18,776			7,435			3,032		
Through January	8,023	8,394	4.62%	17,933	18,533	3.35%	6,764	6,853	1.32%	3,364	3,093	-8.06%

ENPLANEMENTS	MIDWEST CONNECT			CONTINENTAL			CHARTERS		
	2009	2010	% Change	2009	2010	% Change	2009	2010	% Change
January	1,527	2,326	52.32%	1,227	1,452	18.34%	151	0	-100.00%
February	1,692			1,630			0		
March	1,852			1,944			0		
April	2,115			1,848			159		
May	2,281			1,526			0		
June	2,499			1,753			0		
July	2,533			2,088			0		
August	2,652			2,084			0		
September	2,308			1,618			161		
October	2,231			1,584			0		
November	2,571			1,713			0		
December	2,311			2,024			0		
Through January	1,527	2,326	52.32%	1,227	1,452	18.34%	151	0	N/A

Latest Stats.**	<u>Nov</u>	<u>Jan-Nov 2009</u>
National avg.	2.07%	-5.52%
Bishop Airport	7.43%	-7.73%

**ENPLANEMENT SHARE BY AIRLINE
Calendar Year 2010**



** RITA Bureau of Transportation Statistics

	2009	TOTAL 2010	% Change
	January	38,989	40,651
February	39,826	0	
March	44,541	0	
April	40,340	0	
May	35,859	0	
June	39,797	0	
July	45,519	0	
August	44,361	0	
September	36,984	0	
October	41,789	0	
November	41,073	0	
December	42,022	0	
Through January	38,989	40,651	4.26%
Total Year	491,100	40,651	

**BISHOP INTERNATIONAL AIRPORT AUTHORITY
AIRLINE LOAD FACTOR ANALYSIS**

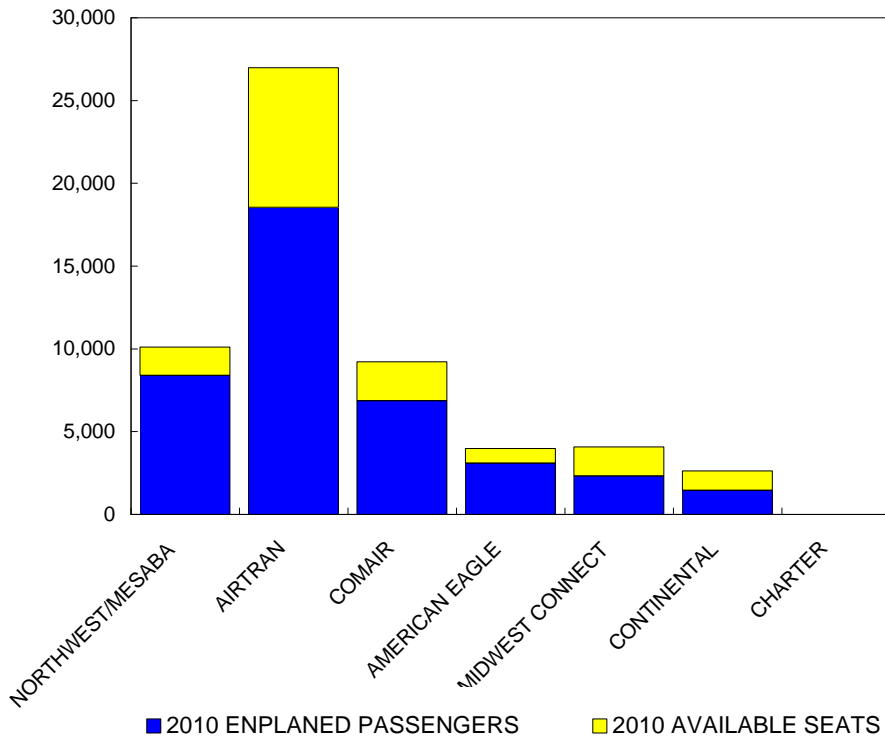
1/1/2010

2009

2010

AIRLINE	AVAILABLE SEATS	ENPLANED PAX	LOAD FACTOR	AVAILABLE SEATS	ENPLANED PAX	LOAD FACTOR
NORTHWEST/MESABA	14,632	8,023	54.83%	10,100	8,394	83.11%
AIRTRAN	21,645	17,933	82.85%	26,980	18,533	68.69%
COMAIR	8,170	6,764	82.79%	9,230	6,853	74.25%
AMERICAN EAGLE	4,070	3,364	82.65%	3,986	3,093	77.60%
MIDWEST CONNECT	3,750	1,527	40.72%	4,069	2,326	57.16%
CONTINENTAL	2,886	1,227	42.52%	2,627	1,452	55.27%
CHARTER	162	151	N/A	0	0	N/A
ALL AIRLINES	55,315	38,989	70.49%	56,992	40,651	71.33%

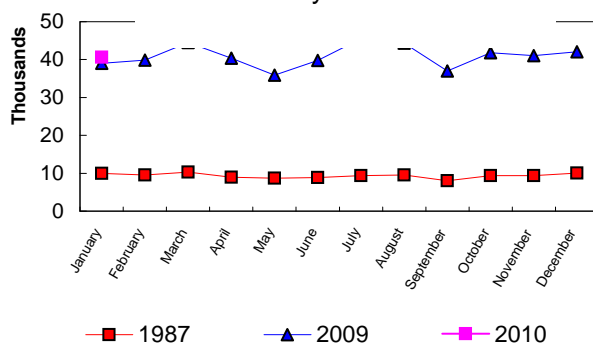
**Enplanements vs Available Seats
Current Month**



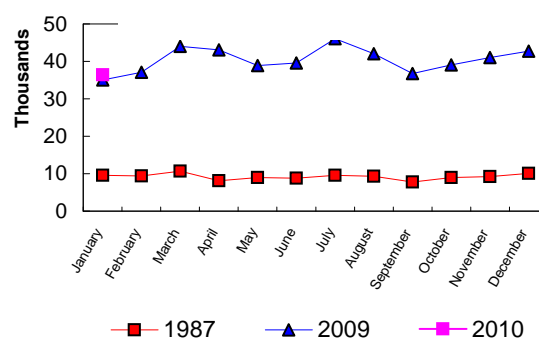
**BISHOP INTERNATIONAL AIRPORT
PASSENGER STATISTICAL COMPARISON
FOR THE YEARS 1987, 2009, 2010**

	ENPLANED PASSENGERS			% CHANGE	% CHANGE
	1987	2009	2010	1987/2010	2009/2010
January	10,008	38,989	40,651	306.19%	4.26%
February	9,544	39,826			
March	10,287	44,541			
April	8,967	40,340			
May	8,685	35,859			
June	8,891	39,797			
July	9,372	45,519			
August	9,586	44,361			
September	8,038	36,984			
October	9,350	41,789			
November	9,402	41,073			
December	10,010	42,022			
Total thru January	10,008	38,989	40,651	306.19%	4.26%
Total for Year	112,140	491,100	40,651		

ENPLANEMENT COMPARISON
Pre-Authority vs 2009 & 2010



DEPLANEMENT COMPARISON
Pre-Authority vs 2009 & 2010



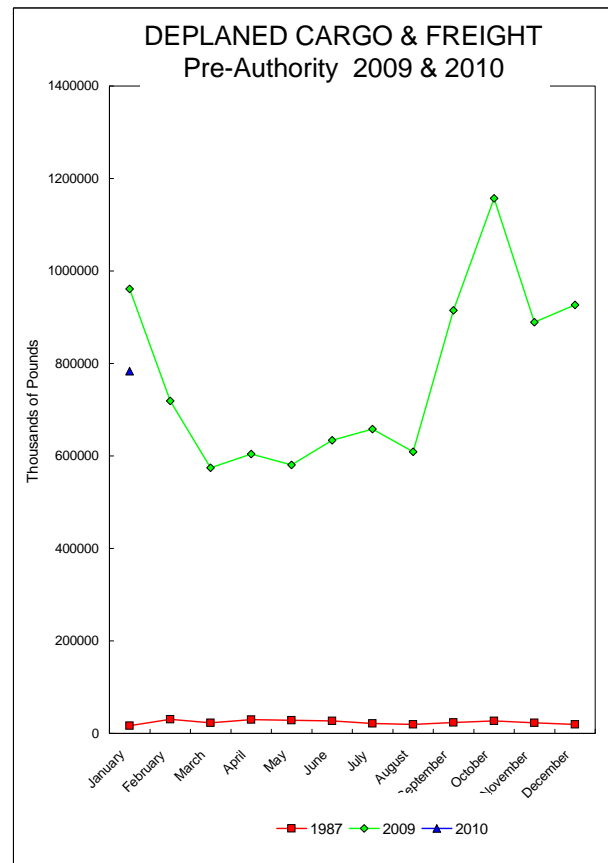
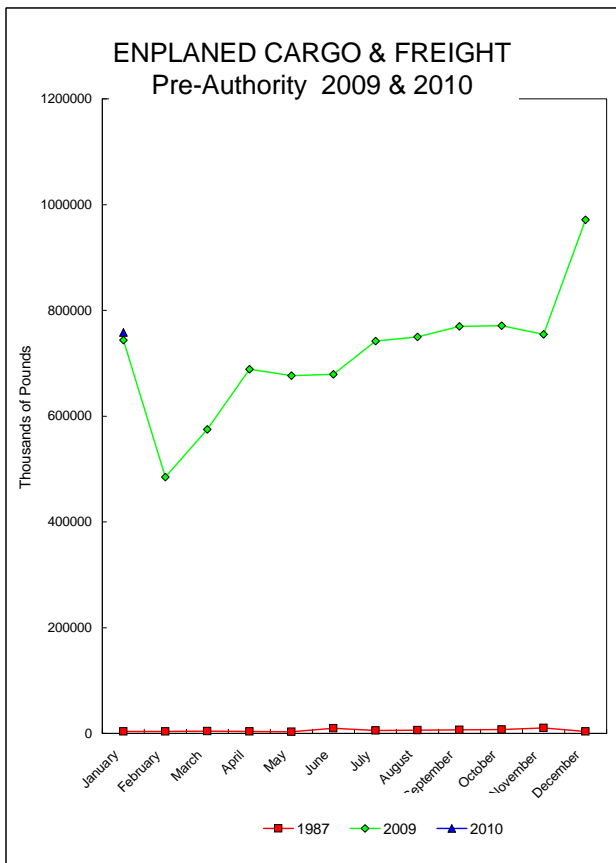
	DEPLANED PASSENGERS			% CHANGE	% CHANGE
	1987	2009	2010	1987/2010	2009/2010
January	9,542	35,013	36,396	281.43%	3.95%
February	9,380	37,122			
March	10,646	43,994			
April	8,139	43,119			
May	8,969	38,854			
June	8,795	39,569			
July	9,592	46,075			
August	9,331	42,012			
September	7,740	36,714			
October	9,005	39,097			
November	9,235	41,005			
December	10,114	42,724			
Total thru January	9,542	35,013	36,396	281.43%	3.95%
Total for Year	110,488	485,298	36,396		

Total all current month	19,550	74,002	77,047
Total all for the year	222,628	976,398	77,047

BISHOP INTERNATIONAL AIRPORT AIR CARGO AND FREIGHT COMPARISON Pre-Authority(1987) 2009 & 2010

TOTAL AIR CARGO AND FREIGHT

	ENPLANED CARGO & FREIGHT			% Change 87-2010	% Change 2009-2010	DEPLANED CARGO & FREIGHT			% Change 87-2010	% Change 2009-2010
	1987	2009	2010			1987	2009	2010		
January	3,660	743,851	758,243	20617.02%	1.93%	16,557	961,215	783,074	4629.56%	-18.53%
February	3,582	484,989								
March	4,268	574,692								
April	3,747	688,774								
May	3,219	676,504								
June	9,901	679,073								
July	5,316	741,605								
August	6,299	749,498								
September	6,509	769,951								
October	7,148	771,062								
November	10,254	754,719								
December	3,905	971,301								
Total thru January	3,660	743,851	758,243			16,557	961,215	783,074		
Annual Total	67,808	8,606,019	758,243			288,485	9,228,164	783,074		



FEDEX

	ENPLANED CARGO & FREIGHT					DEPLANED CARGO & FREIGHT				
	1987	2009	2010	% Change 87-2010	% Change 2009-2010	1987	2009	2010	% Change 87-2010	% Change 2009-2010
January	0	715,678	730,129	N/A	2.02%	0	939,152	752,475	N/A	-19.88%
February	0	458,660				0	585,302			
March	0	545,702				0	559,596			
April	0	662,738				0	588,658			
May	0	646,092				0	562,225			
June	0	648,497				0	612,993			
July	0	704,960				0	634,876			
August	0	714,030				0	582,020			
September	0	733,322				0	679,842			
October	0	739,096				0	741,488			
November	0	726,534				0	824,805			
December	0	937,824				0	895,436			
Total thru January	0	715,678	730,129	N/A	2.02%	0	939,152	752,475	N/A	-19.88%

GVA

	ENPLANED CARGO & FREIGHT					DEPLANED CARGO & FREIGHT				
	1987	2009	2010	% Change 87-2010	% Change 2009-2010	1987	2009	2010	% Change 87-2010	% Change 2009-2010
January	0	0	0	N/A	N/A	0	0	10,968	N/A	N/A
February	0	0				0	0			
March	0	0				0	0			
April	0	0				0	0			
May	0	0				0	0			
June	0	0				0	0			
July	0	0				0	0			
August	0	2,684				0	2,392			
September	0	4,151				0	217,311			
October	0	0				0	392,674			
November	0	0				0	45,665			
December	0	234				0	12,221			
Total thru January	0	0	0	N/A	N/A	0	0	10,968	N/A	N/A

DELTA/ASA

	ENPLANED CARGO & FREIGHT					DEPLANED CARGO & FREIGHT				
	1987	2009	2010	% Change 87-2010	% Change 2009-2010	1987	2009	2010	% Change 87-2010	% Change 2009-2010
January	0	104	0	N/A	N/A	0	0	0	N/A	N/A
February	0	40				0	0			
March	0	32				0	0			
April	0	45				0	6			
May	0	59				0	14			
June	0	0				0	18			
July	0	29				0	10			
August	0	27				0	0			
September	0	6				0	0			
October	0	0				0	8			
November	0	250				0	0			
December	0	0				0	1			
Total thru January	0	104	0	N/A	N/A	0	0	0	N/A	N/A

AMERICAN EAGLE

	ENPLANED CARGO & FREIGHT					DEPLANED CARGO & FREIGHT				
	1987	2009	2010	% Change 87-2010	% Change 2009-2010	1987	2009	2010	% Change 87-2010	% Change 2009-2010
January	0	63	71	N/A	12.70%	0	33	21	N/A	-36.36%
February	0	60				0	68			
March	0	51				0	12			
April	0	53				0	46			
May	0	59				0	14			
June	0	63				0	5			
July	0	57				0	9			
August	0	62				0	6			
September	0	63				0	2			
October	0	69				0	14			
November	0	66				0	6			
December	0	70				0	36			
Total thru January	0	63	71	N/A	N/A	0	33	21	N/A	N/A

NORTHWEST (MESABA)

	ENPLANED CARGO & FREIGHT					DEPLANED CARGO & FREIGHT				
	1987	2009	2010	% Change 87-2010	% Change 2009-2010	1987	2009	2010	% Change 87-2010	% Change 2009-2010
January	120	50	278	131.67%	N/A	837	0	1,477	76.46%	N/A
February	310	155				1,649	0			
March	256	42				2,098	9			
April	0	29				0	26			
May	0	4				0	95			
June	0	0				0	0			
July	0	0				0	0			
August	0	57				0	650			
September	0	0				0	204			
October	0	28				0	707			
November	0	56				0	677			
December	0	344				0	130			
Total thru January	120	50	278	131.67%	456.00%	837	0	1,477	76.46%	N/A

MIDWEST CONNECT

	ENPLANED CARGO & FREIGHT					DEPLANED CARGO & FREIGHT				
	1987	2009	2010	% Change 87-2010	% Change 2009-2010	1987	2009	2010	% Change 87-2010	% Change 2009-2010
January	0	0	0	N/A	N/A	0	0	0	N/A	N/A
February	0	0				0	23			
March	0	0				0	0			
April	0	0				0	188			
May	0	0				0	20			
June	0	0				0	40			
July	0	0				0	12			
August	0	0				0	0			
September	0	0				0	26			
October	0	0				0	56			
November	0	0				0	38			
December	0	0				0	19			
Total thru January	0	0	0	N/A	N/A	0	0	0	N/A	#DIV/0!

EAGLE AIR CARGO

	ENPLANED CARGO & FREIGHT					DEPLANED CARGO & FREIGHT				
	1987	2009	2010	% Change 87-2010	% Change 2009-2010	1987	2009	2010	% Change 87-2010	% Change 2009-2010
January	0	0	0	N/A	N/A	0	0	0	N/A	N/A
February	0	0				0	0			
March	0	0				0	0			
April	0	0				0	0			
May	0	0				0	0			
June	0	0				0	0			
July	0	0				0	0			
August	0	0				0	0			
September	0	0				0	0			
October	0	0				0	0			
November	0	0				0	0			
December	0	0				0	0			
Total thru January	0	0	0	N/A	N/A	0	0	0	N/A	N/A

CSA Air, Inc.

	ENPLANED CARGO & FREIGHT					DEPLANED CARGO & FREIGHT				
	1987	2009	2010	% Change 87-2010	% Change 2009-2010	1987	2009	2010	% Change 87-2009	% Change 2009-2010
January	0	27,956	27,765	N/A	N/A	0	22,030	18,133	N/A	N/A
February	0	26,074				0	133,966			
March	0	28,865				0	14,675			
April	0	25,909				0	15,534			
May	0	30,290				0	18,311			
June	0	30,513				0	20,698			
July	0	36,559				0	23,317			
August	0	32,638				0	23,924			
September	0	32,409				0	17,273			
October	0	31,869				0	22,205			
November	0	27,813				0	17,836			
December	0	32,829				0	18,511			
Total thru January	0	27,956	27,765	N/A	-0.68%	0	22,030	18,133	N/A	-17.69%

AIRTRAN

	ENPLANED CARGO & FREIGHT					DEPLANED CARGO & FREIGHT				
	1987	2009	2010	% Change 87-2010	% Change 2009-2010	1987	2009	2010	% Change 87-2010	% Change 2009-2010
January	0	0	0	N/A	N/A	0	0	0	N/A	N/A
February	0	0				0	0			
March	0	0				0	0			
April	0	0				0	0			
May	0	0				0	0			
June	0	0				0	0			
July	0	0				0	0			
August	0	0				0	0			
September	0	0				0	0			
October	0	0				0	0			
November	0	0				0	0			
December	0	0				0	0			
Total thru January	0	0	0	N/A	N/A	0	0	0	N/A	N/A

PRIOR CARRIERS

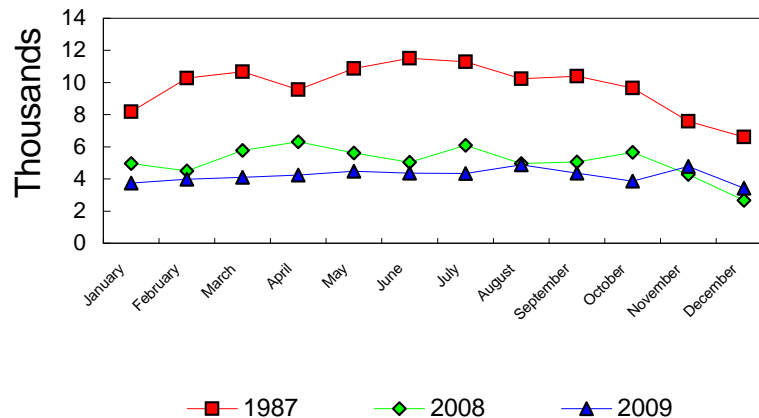
	ENPLANED CARGO & FREIGHT					DEPLANED CARGO & FREIGHT				
	1987	2009	2010	% Change 87-2010	% Change 2009-2010	1987	2009	2010	% Change 87-2010	% Change 2009-2010
January	3,540	0	0	-100.00%	N/A	15,720	0	0	N/A	N/A
February	3,272	0				28,748	0			
March	4,012	0				20,915	0			
April	3,747	0				30,094	0			
May	3,219	0				28,459	0			
June	9,901	0				27,135	0			
July	5,316	0				21,325	0			
August	6,299	0				19,064	0			
September	6,509	0				23,494	0			
October	7,148	0				26,707	0			
November	10,254	0				22,817	0			
December	3,905	0				19,423	0			
Total thru January	3,540	0	0	N/A	N/A	15,720	0	0	N/A	N/A

OPERATIONS STATISTICAL COMPARISON

FOR YEARS 1987, 2008 & 2009

	1987 OPERATIONS	2008 OPERATIONS	2009 OPERATIONS	CHANGE 1987/2009	CHANGE 2008/2009
January	8,177	4,961	3,739	-54.27%	-24.63%
February	10,270	4,491	3,981	-61.24%	-11.36%
March	10,677	5,784	4,095	-61.65%	-29.20%
April	9,562	6,307	4,248	-55.57%	-32.65%
May	10,870	5,611	4,480	-58.79%	-20.16%
June	11,514	5,033	4,355	-62.18%	-13.47%
July	11,296	6,096	4,348	-61.51%	-28.67%
August	10,240	4,965	4,881	-52.33%	-1.69%
September	10,389	5,050	4,366	-57.97%	-13.54%
October	9,656	5,651	3,867	-59.95%	-31.57%
November	7,592	4,273	4,770	-37.17%	11.63%
December	6,608	2,660	3,429	-48.11%	28.91%
Total Through December	116,851	60,882	50,559	-56.73%	-16.96%
ANNUAL TOTAL	116,851	60,882	50,559		

OPERATIONS Pre-Authority vs 2008 & 2009



**BISHOP INTERNATIONAL AIRPORT
AIR TRAFFIC RECORD 2010**

MONTH	ITINERANT AIRCRAFT					LOCAL AIRCRAFT			TOTAL OPERATIONS	CUMULATIVE OPERATIONS
	AIR CARRIER	AIR TAXI	GENERAL AVIATION	MILITARY	TOTAL ITINERANT	CIVILIAN	MILITARY	TOTAL LOCAL		
JANAURY	717	1,023	1,151	8	2,899	648	0	648	3,547	3,547
FEBRUARY					0			0	0	0
MARCH					0			0	0	0
APRIL					0			0	0	0
MAY					0			0	0	0
JUNE					0			0	0	0
JULY					0			0	0	0
AUGUST					0			0	0	0
SEPTEMBER					0			0	0	0
OCTOBER					0			0	0	0
NOVEMBER					0			0	0	0
DECEMBER					0			0	0	0
TOTALS	717	1,023	1,151	8	2,899	648	0	648	3,547	