

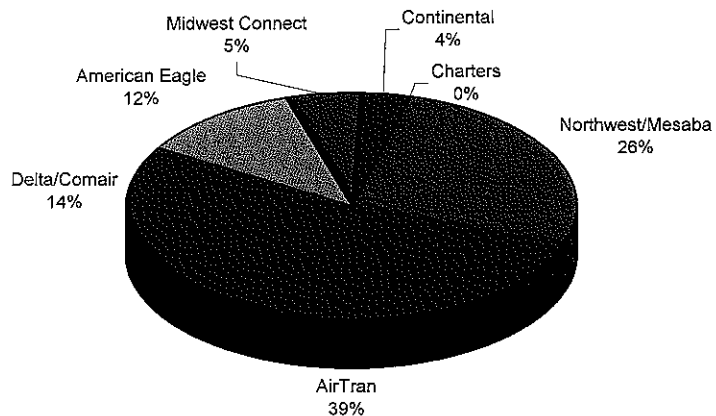
**BISHOP INTERNATIONAL AIRPORT AUTHORITY
AIRLINE PASSENGER COMPARISON
CALENDAR YEARS 2007 AND 2008**

ENPLANEMENTS	NORTHWEST/MESABA			AIRTRAN			DELTA/COMAIR/ASA			AMERICAN EAGLE		
	2007	2008	% Change	2007	2008	% Change	2007	2008	% Change	2007	2008	% Change
January	11,584	12,291	6.10%	19,586	19,049	-2.74%	5,055	6,850	35.51%	3,455	5,916	71.23%
February	13,256	11,684	-11.86%	20,853	23,711	13.71%	5,446	5,909	8.50%	3,185	4,989	56.64%
March	20,531	16,416	-20.04%	22,840	23,928	4.76%	5,952	6,878	15.56%	3,488	5,691	63.16%
April	16,599	12,221	-26.38%	19,438	18,054	-7.12%	5,819	5,984	2.84%	3,598	5,068	40.86%
May	11,994	11,505	-4.08%	15,444	15,312	-0.85%	5,120	5,811	13.50%	5,121	5,066	-1.07%
June	12,309	11,542	-6.23%	15,665	15,362	-1.93%	5,807	6,677	14.98%	5,004	5,416	8.23%
July	12,672	11,752	-7.26%	17,557	16,037	-8.66%	5,800	7,073	21.95%	5,085	6,053	19.04%
August	12,099			17,795			5,951			5,080		
September	10,845			14,536			6,085			5,935		
October	11,028			17,086			6,012			6,325		
November	12,073			19,301			6,193			6,427		
December	12,503			19,882			5,444			5,836		
Through July	98,945	87,411	-11.66%	131,383	131,453	0.05%	38,999	45,182	15.85%	28,936	38,199	32.01%

ENPLANEMENTS	MIDWEST CONNECT			CONTINENTAL			CHARTERS		
	2007	2008	% Change	2007	2008	% Change	2007	2008	% Change
January	1,032	1,640	58.91%	916	1,340	46.29%	122	159	30.33%
February	1,005	1,642	63.38%	1,148	1,497	30.40%	0	0	N/A
March	1,185	2,565	116.46%	1,242	1,751	40.98%	0	0	N/A
April	1,569	2,794	78.08%	1,148	1,780	55.05%	163	159	-2.45%
May	1,518	2,895	90.71%	1,087	1,853	70.47%	0	0	N/A
June	1,770	3,137	77.23%	1,219	1,675	37.41%	0	0	N/A
July	1,927	2,948	52.98%	1,198	1,717	43.32%	0	0	N/A
August	2,271			1,638			0		
September	1,816			925			157		
October	1,712			1,465			0		
November	1,741			1,460			149		
December	1,579			1,526			0		
Through July	10,006	17,621	76.10%	7,958	11,613	45.93%	285	318	N/A

**ENPLANEMENT SHARE BY AIRLINE
Calendar Year 2008**

Latest National Average -0.4% May-08
2008 National Trend May



	TOTAL		
	2007	2008	% Change
January	41,750	47,245	13.16%
February	44,893	49,432	10.11%
March	55,238	57,229	3.60%
April	48,334	46,060	-4.70%
May	40,284	42,442	5.36%
June	41,774	43,809	4.87%
July	44,239	45,580	3.03%
August	44,834	0	
September	40,299	0	
October	43,628	0	
November	47,344	0	
December	46,770	0	
Through July	316,512	331,797	4.83%
Total Year	539,387	331,797	

- Northwest/Mesaba ■ AirTran ■ Delta/Comair
- American Eagle ■ Midwest Connect ■ Continental
- Charters

**BISHOP INTERNATIONAL AIRPORT AUTHORITY
AIRLINE LOAD FACTOR ANALYSIS**

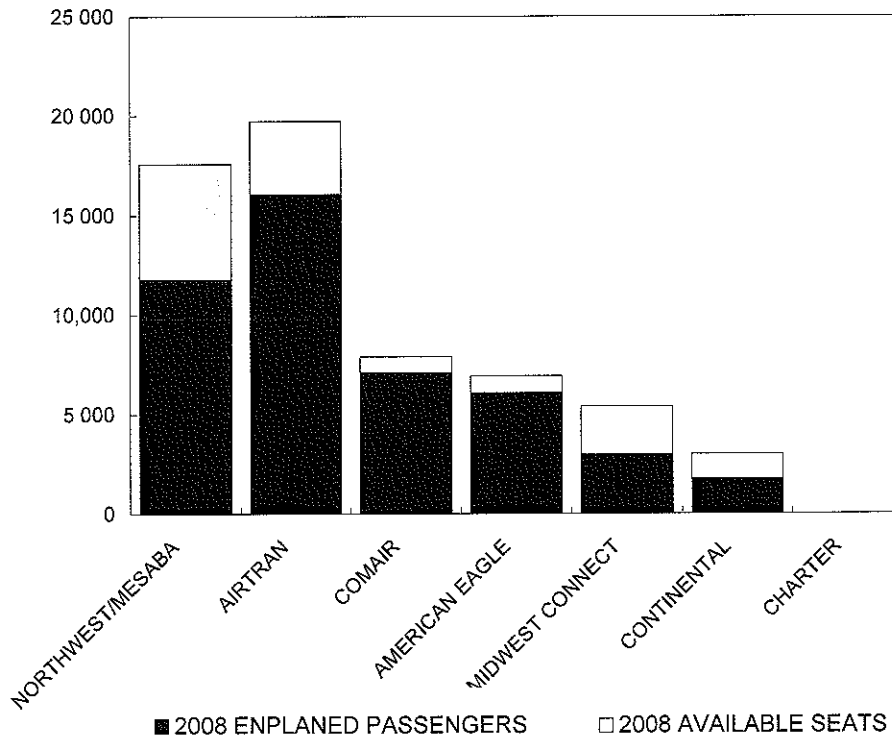
July-08

2007

2008

AIRLINE	2007			2008		
	AVAILABLE SEATS	ENPLANED PAX	LOAD FACTOR	AVAILABLE SEATS	ENPLANED PAX	LOAD FACTOR
NORTHWEST/MESABA	18,193	12,672	69.65%	17,568	11,752	66.89%
AIRTRAN	20,283	17,557	86.56%	19,726	16,037	81.30%
COMAIR	6,950	5,800	83.45%	7,900	7,073	89.53%
AMERICAN EAGLE	5,900	5,085	86.19%	6,924	6,053	87.42%
MIDWEST CONNECT	2,752	1,927	70.02%	5,400	2,948	54.59%
CONTINENTAL	1,520	1,198	78.82%	2,997	1,717	57.29%
CHARTER	0	0	N/A	0	0	N/A
ALL AIRLINES	55,598	44,239	79.57%	60,515	45,580	75.32%

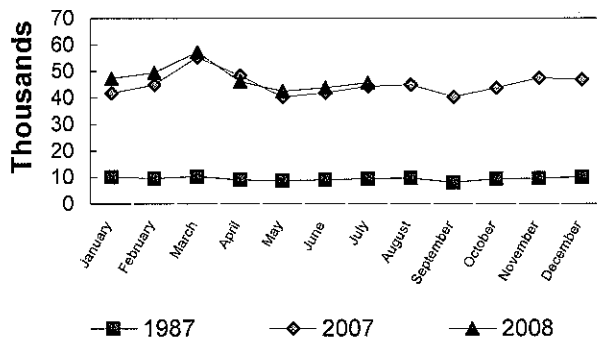
**Enplanements vs Available Seats
Current Month**



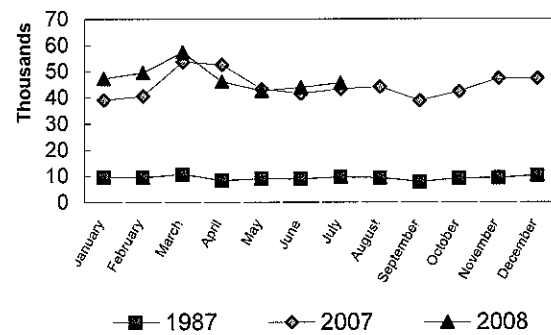
**BISHOP INTERNATIONAL AIRPORT
PASSENGER STATISTICAL COMPARISON
FOR THE YEARS 1987, 2007, 2008**

ENPLANED PASSENGERS				% CHANGE	% CHANGE
	1987	2007	2008	1987/2008	2007/2008
January	10,008	41,750	47,245	372.07%	13.16%
February	9,544	44,893	49,432	417.94%	10.11%
March	10,287	55,238	57,229	456.32%	3.60%
April	8,967	48,334	46,060	413.66%	-4.70%
May	8,685	40,284	42,442	388.68%	5.36%
June	8,891	41,774	43,809	392.73%	4.87%
July	9,372	44,239	45,580	386.34%	3.03%
August	9,586	44,834			
September	8,038	40,299			
October	9,350	43,628			
November	9,402	47,344			
December	10,010	46,770			
Total thru July	65,754	316,512	331,797	404.60%	4.83%
Total for Year	112,140	539,387	331,797		

**ENPLANEMENT COMPARISON
Pre-Authority vs 2007 & 2008**



**DEPLANEMENT COMPARISON
Pre-Authority vs 2007 & 2008**



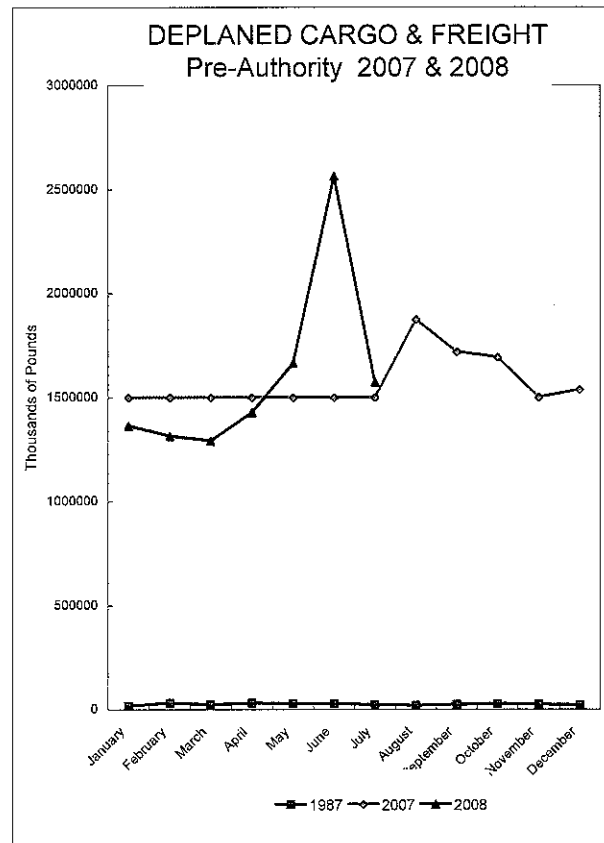
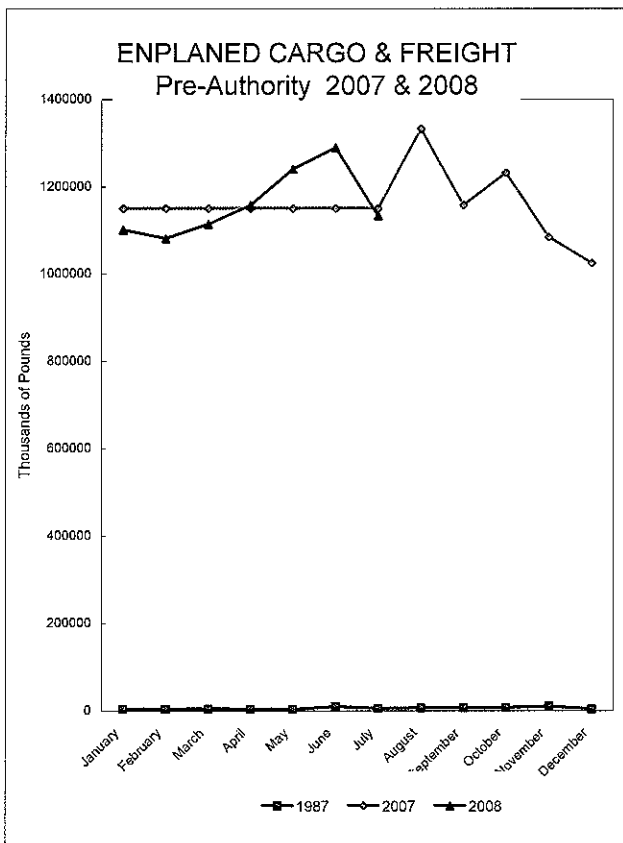
DEPLANED PASSENGERS				% CHANGE	% CHANGE
	1987	2007	2008	1987/2008	2007/2008
January	9,542	39,038	41,948	339.61%	7.45%
February	9,380	40,531	44,852	378.17%	10.66%
March	10,646	53,615	55,515	421.46%	3.54%
April	8,139	52,500	52,171	541.00%	-0.63%
May	8,969	43,252	46,110	414.10%	6.61%
June	8,795	41,467	43,716	397.06%	5.42%
July	9,592	43,142	45,689	376.32%	5.90%
August	9,331	44,039			
September	7,740	38,844			
October	9,005	42,190			
November	9,235	47,179			
December	10,114	47,236			
Total thru July	65,063	313,545	330,001	407.20%	5.25%
Total for Year	110,488	533,033	330,001		

Total all current month	130,817	630,057	661,798
Total all for the year	222,628	1,072,420	661,798

BISHOP INTERNATIONAL AIRPORT AIR CARGO AND FREIGHT COMPARISON Pre-Authority(1987) 2007 & 2008

TOTAL AIR CARGO AND FREIGHT

	ENPLANED CARGO & FREIGHT			% Change 87-2008	% Change 2007-2008	DEPLANED CARGO & FREIGHT			% Change 87-2008	% Change 2007-2008
	1987	2007	2008			1987	2007	2008		
January	3,680	1,149,961	1,100,987	29981.61%	-4.26%	16,557	1,498,387	1,362,803	8129.77%	-9.06%
February	3,582	1,149,961	1,080,738	30071.36%	-6.02%	36,397	1,498,387	1,312,330	4217.30%	-12.42%
March	4,268	1,149,961	1,114,173	26005.27%	-3.11%	23,013	1,498,387	1,290,406	5507.29%	-13.88%
April	3,747	1,149,961	1,157,137	30781.69%	0.62%	30,094	1,498,387	1,426,201	4639.15%	-4.82%
May	3,219	1,149,961	1,239,693	38411.74%	7.80%	28,459	1,498,387	1,663,538	5745.38%	11.02%
June	9,901	1,149,961	1,289,325	12922.17%	12.12%	27,135	1,498,387	2,564,805	9351.28%	71.16%
July	5,316	1,149,961	1,133,001	21213.04%	-1.47%	21,325	1,498,387	1,573,163	7277.08%	4.99%
August	6,299	1,332,515				19,064	1,871,760			
September	6,509	1,156,771				23,494	1,716,339			
October	7,148	1,231,577				28,707	1,689,770			
November	10,254	1,083,919				22,817	1,498,446			
December	3,905	1,024,042				19,423	1,535,041			
Total thru July	33,693	8,572,335	8,114,859	23984.70%	-5.34%	176,980	11,505,894	11,192,846	6224.36%	-2.72%
Annual Total	67,808	13,878,551	8,115,054			288,485	18,800,065	11,192,846		



FEDEX

	ENPLANED CARGO & FREIGHT					DEPLANED CARGO & FREIGHT				
	1987	2007	2008	% Change 87-2008	% Change 2007-2008	1987	2007	2008	% Change 87-2008	% Change 2007-2008
January	0	830 801	870 732	N/A	4 81%	0	1 032 796	976 067	N/A	-5 49%
February	0	821 951	839 826	N/A	2 17%	0	1 061 573	986 041	N/A	-7 12%
March	0	988 429	832 812	N/A	-15 74%	0	1 370 078	966 259	N/A	-29 47%
April	0	859 143	902 615	N/A	5 06%	0	1 040 545	1 041 227	N/A	0 07%
May	0	956 377	887 145	N/A	-7 24%	0	1 154 671	1 025 009	N/A	-11 23%
June	0	890 057	850 739	N/A	-4 42%	0	1 151 579	1 020 445	N/A	-11 39%
July	0	844 611	832 637	N/A	-1 42%	0	1 070 546	1 081 087	N/A	0 98%
August	0	973 712				0	1 297 061			
September	0	853 949				0	1 154 353			
October	0	954 218				0	1 255 642			
November	0	839 661				0	1 088 713			
December	0	770 507				0	1 133 242			
Total thru July	0	6,191,369	6,016,506	N/A	-2.82%	0	7,881,788	7,096,135	N/A	-9.97%

GVA

	ENPLANED CARGO & FREIGHT					DEPLANED CARGO & FREIGHT				
	1987	2007	2008	% Change 87-2008	% Change 2007-2008	1987	2007	2008	% Change 87-2008	% Change 2007-2008
January	0	490	40	N/A	-91 84%	0	3 569	0	N/A	N/A
February	0	11 543	8 976	N/A	N/A	0	53 740	2 060	N/A	N/A
March	0	6 094	1 008	N/A	-83 46%	0	40 990	31	N/A	N/A
April	0	1 150	1 793	N/A	55 91%	0	6 267	0	N/A	N/A
May	0	3 288	95 081	N/A	2791 76%	0	26 052	231 046	N/A	786 86%
June	0	18 727	129 326	N/A	590 59%	0	10 546	1 074 485	N/A	10088 55%
July	0	35	0	N/A		0	17 850	0	N/A	
August	0	2 405				0	49 271			
September	0	1 644				0	39 528			
October	0	16 988				0	3 588			
November	0	7 067				0	0			
December	0	0				0	1 822			
Total thru July	0	41,327	236,224	N/A	471.60%	0	159,014	1,307,622	N/A	722.33%

AIRBORNE

	ENPLANED CARGO & FREIGHT					DEPLANED CARGO & FREIGHT				
	1987	2007	2008	% Change 87-2008	% Change 2007-2008	1987	2007	2008	% Change 87-2008	% Change 2007-2008
January	0	283 934	158 619	N/A	-44 14%	0	448 441	360 700	N/A	-19 57%
February	0	283 892	153 865	N/A	-45 80%	0	445 594	294 741	N/A	-33 85%
March	0	335 696	201 341	N/A	-40 02%	0	532 497	298 884	N/A	-43 87%
April	0	270 953	169 401	N/A	-37 48%	0	476 437	357 939	N/A	-24 87%
May	0	280 286	159 640	N/A	-43 04%	0	507 390	380 323	N/A	-25 04%
June	0	312 803	246 821	N/A	-21 09%	0	483 297	445 463	N/A	-7 83%
July	0	261 917	239 609	N/A	-8 52%	0	443 037	467 483	N/A	5 52%
August	0	289 595				0	499 704			
September	0	240 733				0	499 383			
October	0	177 074				0	399 428			
November	0	159 861				0	379 896			
December	0	157 741				0	370 556			
Total thru July	0	2,029,481	1,329,296	N/A	-34.50%	0	3,336,693	2,605,533	N/A	-21.91%

AMERICAN EAGLE

	ENPLANED CARGO & FREIGHT					DEPLANED CARGO & FREIGHT				
	1987	2007	2008	% Change 87-2008	% Change 2007-2008	1987	2007	2008	% Change 87-2008	% Change 2007-2008
January	0	7	258	N/A	N/A	0	134	77	N/A	N/A
February	0	0	7	N/A	N/A	0	254	166	N/A	N/A
March	0	0	172	N/A	N/A	0	195	100	N/A	N/A
April	0	0	123	N/A	N/A	0	295	34	N/A	N/A
May	0	0	28	N/A	N/A	0	0	53	N/A	N/A
June	0	0	77	N/A	N/A	0	367	51	N/A	N/A
July	0	43	46	N/A	N/A	0	0	35	N/A	N/A
August	0	0				0	0			
September	0	26				0	168			
October	0	227				0	0			
November	0	38				0	11			
December	0	16				0	9			
Total thru July	0	50	711	N/A	N/A	0	1,245	516	N/A	N/A

NORTHWEST (MESABA)

	ENPLANED CARGO & FREIGHT			% Change		DEPLANED CARGO & FREIGHT			% Change	
	1987	2007	2008	87-2008	2007-2008	1987	2007	2008	87-2008	2007-2008
January	120	180	101	-15 83%	-43 89%	837	659	67	-92 00%	-89 83%
February	310	433	205	-33 87%	-52 66%	1 649	189	240	-85 45%	26 98%
March	256	284	267	4 30%	-5 99%	2 098	1 117	43	-97 95%	-96 15%
April	0	205	231	N/A	12 68%	0	1 580	89	N/A	-94 37%
May	0	119	198	N/A	66 39%	0	121	179	N/A	47 93%
June	0	391	87	N/A	-77 75%	0	133	102	N/A	-23 31%
July	0	5	129	N/A	2480 00%	0	42	140	N/A	233 33%
August	0	122				0	283			
September	0	363				0	591			
October	0	17				0	201			
November	0	136				0	194			
December	0	74				0	245			
Total thru July	686	1,617	1,218	77.55%	-24.68%	4,584	3,841	860	-81.24%	-77.61%

MIDWEST CONNECT

	ENPLANED CARGO & FREIGHT			% Change		DEPLANED CARGO & FREIGHT			% Change	
	1987	2007	2008	87-2008	2007-2008	1987	2007	2008	87-2008	2007-2008
January	0	0	0	N/A	N/A	0	15	500	N/A	3233 33%
February	0	0	0	N/A	N/A	0	530	846	N/A	59 62%
March	0	0	0	N/A	N/A	0	13	249	N/A	1815 38%
April	0	0	0	N/A	N/A	0	788	588	N/A	-25 38%
May	0	0	0	N/A	N/A	0	322	77	N/A	-76 09%
June	0	0	0	N/A	N/A	0	595	83	N/A	-86 05%
July	0	0	0	N/A	N/A	0	415	133	N/A	-67 95%
August	0	0				0	499			
September	0	0				0	200			
October	0	0				0	350			
November	0	0				0	570			
December	0	0				0	188			
Total thru July	0	0	0	N/A	N/A	0	2,678	2,476	N/A	-7.54%

EAGLE AIR CARGO

	ENPLANED CARGO & FREIGHT			% Change		DEPLANED CARGO & FREIGHT			% Change	
	1987	2007	2008	87-2008	2007-2008	1987	2007	2008	87-2008	2007-2008
January	0	0	19977	N/A	N/A	0	0	8 298	N/A	N/A
February	0	0	25942	N/A	N/A	0	0	10 234	N/A	N/A
March	0	0	24500	N/A	N/A	0	0	6 612	N/A	N/A
April	0	0	29470	N/A	N/A	0	0	8 328	N/A	N/A
May	0	0	39216	N/A	N/A	0	0	9 346	N/A	N/A
June	0	0	0	N/A	N/A	0	0	0	N/A	N/A
July	0	0	0	N/A	N/A	0	0	0	N/A	N/A
August	0	0				0	0			
September	0	6765				0	2 816			
October	0	27136				0	10 334			
November	0	24204				0	8 287			
December	0	31666				0	12 673			
Total thru July	0	0	139,105	N/A	N/A	0	0	42,818	N/A	N/A

CSA Air, Inc.

	ENPLANED CARGO & FREIGHT			% Change		DEPLANED CARGO & FREIGHT			% Change	
	1987	2007	2008	87-2008	2007-2008	1987	2007	2008	87-2008	2007-2008
January	0	34 549	51 260	N/A	48 37%	0	12 773	16 894	N/A	32 26%
February	0	34 424	51 917	N/A	50 82%	0	15 123	18 002	N/A	19 04%
March	0	35 784	54 073	N/A	51 11%	0	14 400	18 228	N/A	26 58%
April	0	35 737	53 504	N/A	49 72%	0	14 485	17 996	N/A	24 24%
May	0	41 818	58 385	N/A	39 62%	0	16 239	17 505	N/A	7 80%
June	0	67 001	62 080	N/A	-7 34%	0	24 699	23 976	N/A	-2 93%
July	0	59 178	60 580	N/A	2 37%	0	18 597	24 285	N/A	30 59%
August	0	66 681				0	24 942			
September	0	53 291				0	19 300			
October	0	55 917				0	20 227			
November	0	52 952				0	20 775			
December	0	64 038				0	16 306			
Total thru July	0	308,491	391,799	N/A	27.01%	0	116,316	136,886	N/A	17.68%

AIRTRAN

	ENPLANED CARGO & FREIGHT			% Change	% Change	DEPLANED CARGO & FREIGHT			% Change	% Change
	1987	2007	2008	87-2008	2007-2008	1987	2007	2008	87-2008	2007-2008
January	0	0	0	N/A	N/A	0	0	0	N/A	N/A
February	0	0	0	N/A	N/A	0	0	0	N/A	N/A
March	0	0	0	N/A	N/A	0	0	0	N/A	N/A
April	0	0	0	N/A	N/A	0	0	0	N/A	N/A
May	0	0	0	N/A	N/A	0	0	0	N/A	N/A
June	0	0	0	N/A	N/A	0	0	0	N/A	N/A
July	0	0	0	N/A	N/A	0	0	0	N/A	N/A
August	0	0				0	0			
September	0	0				0	0			
October	0	0				0	0			
November	0	0				0	0			
December	0	0				0	0			
Total thru July	0	0	0	N/A	N/A	0	0	0	N/A	N/A

PRIOR CARRIERS

	ENPLANED CARGO & FREIGHT			% Change	% Change	DEPLANED CARGO & FREIGHT			% Change	% Change
	1987	2007	2008	87-2008	2007-2008	1987	2007	2008	87-2008	2007-2008
January	3 540	0	0	N/A	N/A	15 720	0	0	N/A	N/A
February	3 272	0	0	N/A	N/A	28 748	0	0	N/A	N/A
March	4 012	0	0	N/A	N/A	20 915	0	0	N/A	N/A
April	3 747	0	0	N/A	N/A	30 094	0	0	N/A	N/A
May	3 219	0	0	N/A	N/A	28 459	0	0	N/A	N/A
June	9 901	0	195	N/A	N/A	27 135	0	0	N/A	N/A
July	5 316	300	0	N/A	N/A	21 325	4 319	0	N/A	N/A
August	6 299	0				19 064	0			
September	6 509	0				23 494	0			
October	7 148	0				26 707	0			
November	10 254	0				22 817	0			
December	3 905	0				19 423	0			
Total thru July	33,007	300	195	N/A	N/A	172,396	4,319	0	N/A	N/A