

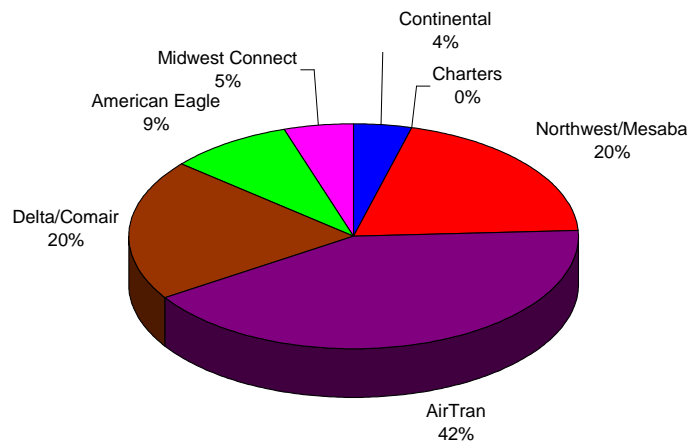
**BISHOP INTERNATIONAL AIRPORT AUTHORITY
AIRLINE PASSENGER COMPARISON
CALENDAR YEARS 2008 AND 2009**

ENPLANEMENTS	NORTHWEST/MESABA			AIRTRAN			DELTA/COMAIR/ASA			AMERICAN EAGLE		
	2008	2009	% Change	2008	2009	% Change	2008	2009	% Change	2008	2009	% Change
January	12,291	8,023	-34.72%	19,049	17,933	-5.86%	6,850	6,764	-1.26%	5,916	3,364	-43.14%
February	11,684	7,456	-36.19%	23,711	18,386	-22.46%	5,909	7,379	24.88%	4,989	3,283	-34.20%
March	16,416	9,003	-45.16%	23,928	19,419	-18.84%	6,878	8,861	28.83%	5,691	3,462	-39.17%
April	12,221	7,254	-40.64%	18,054	16,913	-6.32%	5,984	8,470	41.54%	5,068	3,581	-29.34%
May	11,505	7,707	-33.01%	15,312	12,933	-15.54%	5,811	7,764	33.61%	5,066	3,648	-27.99%
June	11,542	8,316	-27.95%	15,362	14,002	-8.85%	6,677	9,475	41.91%	5,416	3,752	-30.72%
July	11,752			16,037			7,073			6,053		
August	10,856			16,205			6,833			4,612		
September	8,821			11,372			7,118			3,147		
October	8,461			16,529			7,939			3,422		
November	8,421			16,752			7,154			3,121		
December	10,045			16,772			7,564			3,057		
Through June	75,659	47,759	-36.88%	115,416	99,586	-13.72%	38,109	48,713	27.83%	32,146	21,090	-34.39%

ENPLANEMENTS	MIDWEST CONNECT			CONTINENTAL			CHARTERS		
	2008	2009	% Change	2008	2009	% Change	2008	2009	% Change
January	1,640	1,527	-6.89%	1,340	1,227	-8.43%	159	151	-5.03%
February	1,642	1,692	3.05%	1,497	1,630	8.88%	0	0	N/A
March	2,565	1,852	-27.80%	1,751	1,944	11.02%	0	0	N/A
April	2,794	2,115	-24.30%	1,780	1,848	3.82%	159	159	N/A
May	2,895	2,281	-21.21%	1,853	1,526	-17.65%	0	0	N/A
June	3,137	2,499	-20.34%	1,675	1,753	4.66%	0	0	N/A
July	2,948			1,717			0		
August	2,646			1,922			0		
September	1,990			1,438			0		
October	1,810			1,401			157		
November	1,626			1,158			0		
December	2,088			1,575			0		
Through June	14,673	11,966	-18.45%	9,896	9,928	0.32%	318	310	N/A

Latest Stats. March 09 Jan - Mar 09
 National avg. -8.64% -10.35%
 Bishop Airport -22.17% -19.85%

**ENPLANEMENT SHARE BY AIRLINE
Calendar Year 2009**



	TOTAL		
	2008	2009	% Change
January	47,245	38,989	-17.47%
February	49,432	39,826	-19.43%
March	57,229	44,541	-22.17%
April	46,060	40,340	-12.42%
May	42,442	35,859	-15.51%
June	43,809	39,797	-9.16%
July	45,580	0	
August	43,074	0	
September	33,886	0	
October	39,719	0	
November	38,232	0	
December	41,101	0	
Through June	286,217	239,352	-16.37%
Total Year	527,809	239,352	

■ Northwest/Mesaba ■ AirTran ■ Delta/Comair
■ American Eagle ■ Midwest Connect ■ Continental
■ Charters

**BISHOP INTERNATIONAL AIRPORT AUTHORITY
AIRLINE LOAD FACTOR ANALYSIS**

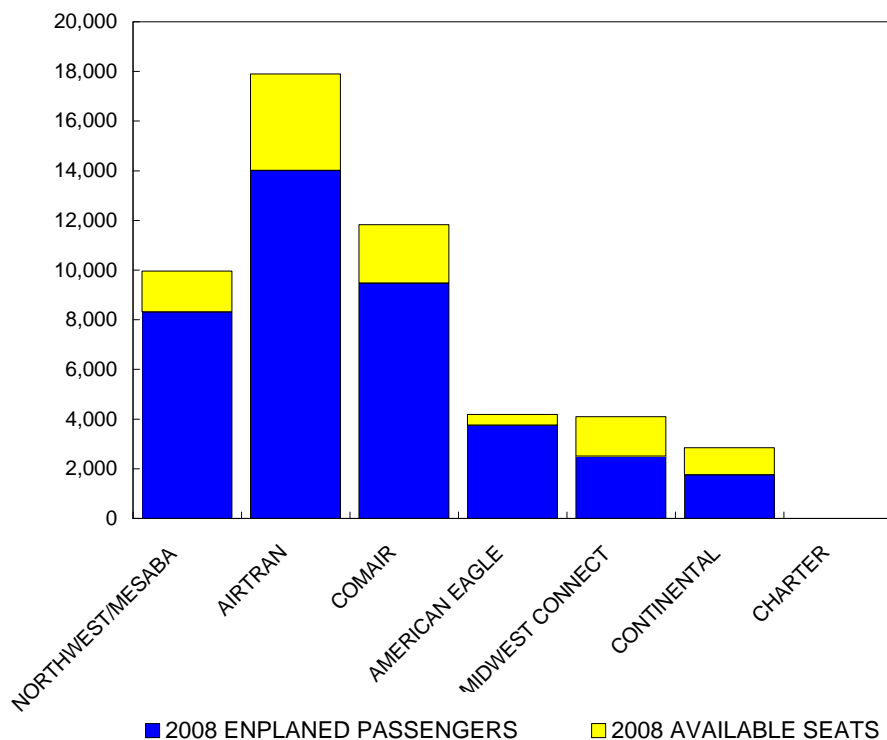
6/1/2009

2008

2009

AIRLINE	AVAILABLE SEATS	ENPLANED PAX	LOAD FACTOR	AVAILABLE SEATS	ENPLANED PAX	LOAD FACTOR
NORTHWEST/MESABA	17,611	11,542	65.54%	9,955	8,316	83.54%
AIRTRAN	20,725	15,362	74.12%	17,901	14,002	78.22%
COMAIR	7,800	6,677	85.60%	11,828	9,475	80.11%
AMERICAN EAGLE	6,387	5,416	84.80%	4,185	3,752	89.65%
MIDWEST CONNECT	5,100	3,137	61.51%	4,100	2,499	60.95%
CONTINENTAL	2,890	1,675	57.96%	2,849	1,753	61.53%
CHARTER	0	0	N/A	0	0	N/A
ALL AIRLINES	60,513	43,809	72.40%	50,818	39,797	78.31%

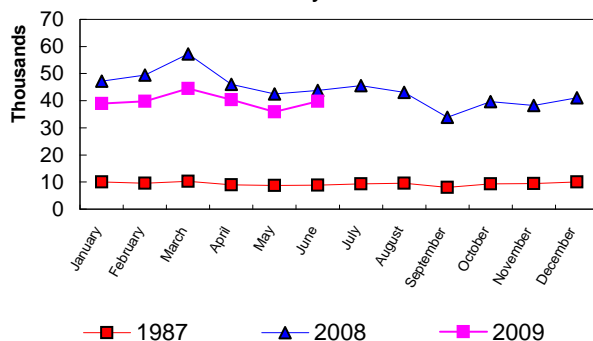
**Enplanements vs Available Seats
Current Month**



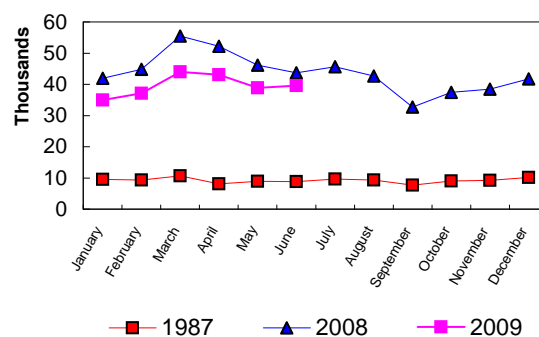
**BISHOP INTERNATIONAL AIRPORT
PASSENGER STATISTICAL COMPARISON
FOR THE YEARS 1987, 2008, 2009**

	ENPLANED PASSENGERS			% CHANGE	% CHANGE
	1987	2008	2009	1987/2009	2008/2009
January	10,008	47,245	38,989	289.58%	-17.47%
February	9,544	49,432	39,826	317.29%	-19.43%
March	10,287	57,229	44,541	332.98%	-22.17%
April	8,967	46,060	40,340	349.87%	-12.42%
May	8,685	42,442	35,859	312.88%	-15.51%
June	8,891	43,809	39,797	347.61%	-9.16%
July	9,372	45,580			
August	9,586	43,074			
September	8,038	33,886			
October	9,350	39,719			
November	9,402	38,232			
December	10,010	41,101			
Total thru June	56,382	286,217	239,352	324.52%	-16.37%
Total for Year	112,140	527,809	239,352		

ENPLANEMENT COMPARISON
Pre-Authority vs 2008 & 2009



DEPLANEMENT COMPARISON
Pre-Authority vs 2008 & 2009



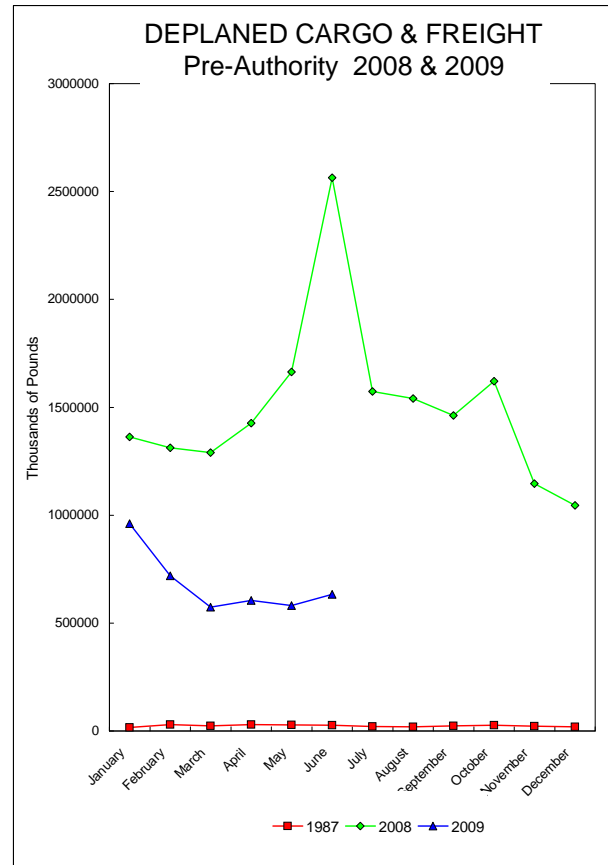
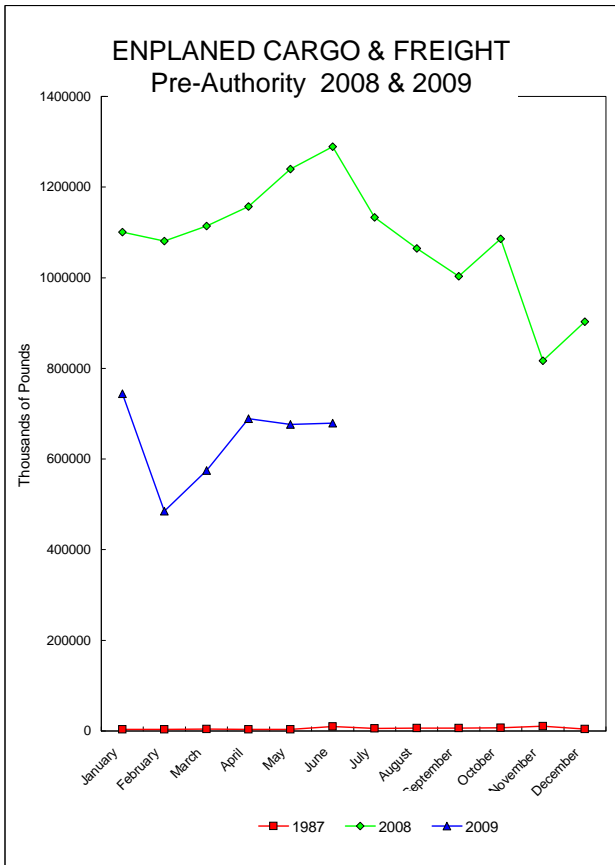
	DEPLANED PASSENGERS			% CHANGE	% CHANGE
	1987	2008	2009	1987/2009	2008/2009
January	9,542	41,948	35,013	266.94%	-16.53%
February	9,380	44,852	37,122	295.76%	-17.23%
March	10,646	55,515	43,994	313.24%	-20.75%
April	8,139	52,171	43,119	429.78%	-17.35%
May	8,969	46,110	38,854	333.20%	-15.74%
June	8,795	43,716	39,569	349.90%	-9.49%
July	9,592	45,689			
August	9,331	42,693			
September	7,740	32,667			
October	9,005	37,478			
November	9,235	38,462			
December	10,114	41,703			
Total thru June	55,471	284,312	237,671	328.46%	-16.40%
Total for Year	110,488	523,004	237,671		

Total all current month	111,853	570,529	477,023
Total all for the year	222,628	1,050,813	477,023

BISHOP INTERNATIONAL AIRPORT AIR CARGO AND FREIGHT COMPARISON Pre-Authority(1987) 2008 & 2009

TOTAL AIR CARGO AND FREIGHT

	ENPLANED CARGO & FREIGHT			% Change 87-2009	% Change 2008-2009	DEPLANED CARGO & FREIGHT			% Change 87-2009	% Change 2008-2009
	1987	2008	2009			1987	2008	2009		
January	3,660	1,100,987	748,851	20223.80%	-32.44%	16,557	1,362,603	961,215	5705.49%	-29.46%
February	3,582	1,080,738	484,989	13439.61%	-55.12%	30,397	1,312,330	719,359	2266.55%	-45.18%
March	4,268	1,114,173	574,692	13365.14%	-48.42%	23,013	1,290,406	574,292	2395.51%	-55.50%
April	3,747	1,157,137	688,774	18282.01%	-40.48%	30,094	1,426,201	604,458	1908.67%	-57.62%
May	3,219	1,239,693	676,504	20915.97%	-45.43%	28,459	1,663,538	580,679	1940.41%	-65.09%
June	9,901	1,289,325	679,073	6758.63%	-47.33%	27,135	2,564,605	633,754	2235.56%	-75.29%
July	5,316	1,139,001				21,325	1,573,163			
August	6,299	1,064,939				19,064	1,540,210			
September	6,509	1,003,008				23,494	1,462,871			
October	7,148	1,085,746				26,707	1,620,352			
November	10,254	816,594				22,817	1,146,640			
December	3,905	908,172				19,423	1,045,282			
Total thru June	28,377	6,981,858	3,847,883	13459.87%	-44.89%	155,655	9,619,600	4,073,719	2517.15%	-57.65%
Annual Total	67,808	12,988,513	3,847,883			288,485	18,008,201	4,073,757		



FEDEX

	ENPLANED CARGO & FREIGHT					DEPLANED CARGO & FREIGHT				
	1987	2008	2009	% Change 87-2009	% Change 2008-2009	1987	2008	2009	% Change 87-2009	% Change 2008-2009
January	0	870,732	715,678	N/A	-17.81%	0	976,067	939,152	N/A	-3.78%
February	0	839,826	458,660	N/A	-45.39%	0	986,041	585,302	N/A	-40.64%
March	0	832,812	545,702	N/A	-34.47%	0	966,259	559,596	N/A	-42.09%
April	0	902,615	662,738	N/A	-26.58%	0	1,041,227	588,658	N/A	-43.46%
May	0	887,145	646,092	N/A	-27.17%	0	1,025,009	562,225	N/A	-45.15%
June	0	850,739	648,497	N/A	-23.77%	0	1,020,445	612,993	N/A	-39.93%
July	0	832,637				0	1,081,087			
August	0	774,265				0	1,065,428			
September	0	715,516				0	994,570			
October	0	824,642				0	1,109,449			
November	0	667,959				0	866,734			
December	0	841,807				0	1,029,399			
Total thru June	0	5,183,869	3,677,367	N/A	-29.06%	0	6,015,048	3,847,926	N/A	-36.03%

GVA

	ENPLANED CARGO & FREIGHT					DEPLANED CARGO & FREIGHT				
	1987	2008	2009	% Change 87-2009	% Change 2008-2009	1987	2008	2009	% Change 87-2009	% Change 2008-2009
January	0	40	0	N/A	N/A	0	0	0	N/A	N/A
February	0	8,976	0	N/A	N/A	0	2,060	0	N/A	N/A
March	0	1,008	0	N/A	N/A	0	31	0	N/A	N/A
April	0	1,793	0	N/A	N/A	0	0	0	N/A	N/A
May	0	95,081	0	N/A	N/A	0	231,046	0	N/A	N/A
June	0	129,326	0	N/A	N/A	0	1,074,485	0	N/A	N/A
July	0	0				0	0			
August	0	250				0	6,220			
September	0	11,748				0	10,000			
October	0	10				0	0			
November	0	0				0	0			
December	0	3,910				0	0			
Total thru June	0	236,224	0	N/A	-100.00%	0	1,307,622	0	N/A	-100.00%

AIRBORNE

	ENPLANED CARGO & FREIGHT					DEPLANED CARGO & FREIGHT				
	1987	2008	2009	% Change 87-2009	% Change 2008-2009	1987	2008	2009	% Change 87-2009	% Change 2008-2009
January	0	158,619	0	N/A	N/A	0	360,700	0	N/A	N/A
February	0	153,865	0	N/A	N/A	0	294,741	0	N/A	N/A
March	0	201,341	0	N/A	N/A	0	298,884	0	N/A	N/A
April	0	169,401	0	N/A	N/A	0	357,939	0	N/A	N/A
May	0	159,640	0	N/A	N/A	0	380,323	0	N/A	N/A
June	0	246,821	0	N/A	N/A	0	445,463	0	N/A	N/A
July	0	239,609				0	467,483			
August	0	231,286				0	445,980			
September	0	219,903				0	432,950			
October	0	194,008				0	476,602			
November	0	96,999				0	260,875			
December	0	0				0	0			
Total thru June	0	1,089,687	0	N/A	-100.00%	0	2,138,050	0	N/A	-100.00%

AMERICAN EAGLE

	ENPLANED CARGO & FREIGHT					DEPLANED CARGO & FREIGHT				
	1987	2008	2009	% Change 87-2009	% Change 2008-2009	1987	2008	2009	% Change 87-2009	% Change 2008-2009
January	0	258	63	N/A	-75.58%	0	77	33	N/A	-57.14%
February	0	7	60	N/A	757.14%	0	166	68	N/A	-59.04%
March	0	172	51	N/A	-70.35%	0	100	12	N/A	-88.00%
April	0	123	53	N/A	-56.91%	0	34	46	N/A	35.29%
May	0	28	59	N/A	110.71%	0	53	14	N/A	-73.58%
June	0	77	63	N/A	-18.18%	0	51	5	N/A	-90.20%
July	0	46				0	35			
August	0	44				0	44			
September	0	43				0	14			
October	0	54				0	83			
November	0	54				0	117			
December	0	45				0	2			
Total thru June	0	665	349	N/A	N/A	0	481	178	N/A	N/A

NORTHWEST (MESABA)

	ENPLANED CARGO & FREIGHT					DEPLANED CARGO & FREIGHT				
	1987	2008	2009	% Change 87-2009	% Change 2008-2009	1987	2008	2009	% Change 87-2009	% Change 2008-2009
January	120	101	50	-58.33%	-50.50%	837	67	0	-100.00%	N/A
February	310	205	155	-50.00%	-24.39%	1,649	240	0	N/A	N/A
March	256	267	42	-83.59%	-84.27%	2,098	43	9	-99.57%	-79.07%
April	0	231	29	N/A	-87.45%	0	89	26	N/A	-70.79%
May	0	198	4	N/A	-97.98%	0	179	95	N/A	-46.93%
June	0	87	0	N/A	N/A	0	102	0	N/A	N/A
July	0	129				0	140			
August	0	98				0	623			
September	0	409				0	192			
October	0	74				0	162			
November	0	276				0	7			
December	0	133				0	12			
Total thru June	686	1,089	280	-59.18%	-74.29%	4,584	720	130	-97.16%	-81.94%

MIDWEST CONNECT

	ENPLANED CARGO & FREIGHT					DEPLANED CARGO & FREIGHT				
	1987	2008	2009	% Change 87-2009	% Change 2008-2009	1987	2008	2009	% Change 87-2009	% Change 2008-2009
January	0	0	0	N/A	N/A	0	500	0	N/A	N/A
February	0	0	0	N/A	N/A	0	846	23	N/A	-97.28%
March	0	0	0	N/A	N/A	0	249	0	N/A	N/A
April	0	0	0	N/A	N/A	0	588	188	N/A	-68.03%
May	0	0	0	N/A	N/A	0	77	20	N/A	-74.03%
June	0	0	0	N/A	N/A	0	83	40	N/A	-51.81%
July	0	0				0	133			
August	0	0				0	181			
September	0	0				0	86			
October	0	0				0	0			
November	0	0				0	100			
December	0	0				0	0			
Total thru June	0	0	0	N/A	N/A	0	2,260	271	N/A	-88.01%

EAGLE AIR CARGO

	ENPLANED CARGO & FREIGHT					DEPLANED CARGO & FREIGHT				
	1987	2008	2009	% Change 87-2009	% Change 2008-2009	1987	2008	2009	% Change 87-2009	% Change 2008-2009
January	0	19977	0	N/A	N/A	0	8,298	0	N/A	N/A
February	0	25942	0	N/A	N/A	0	10,234	0	N/A	N/A
March	0	24500	0	N/A	N/A	0	6,612	0	N/A	N/A
April	0	29470	0	N/A	N/A	0	8,328	0	N/A	N/A
May	0	39216	0	N/A	N/A	0	9,346	0	N/A	N/A
June	0	0	0	N/A	N/A	0	0	0	N/A	N/A
July	0	0				0	0			
August	0	0				0	0			
September	0	0				0	0			
October	0	0				0	0			
November	0	0				0	0			
December	0	0				0	0			
Total thru June	0	139,105	0	N/A	N/A	0	42,818	0	N/A	N/A

CSA Air, Inc.

	ENPLANED CARGO & FREIGHT					DEPLANED CARGO & FREIGHT				
	1987	2008	2009	% Change 87-2009	% Change 2008-2009	1987	2008	2009	% Change 87-2009	% Change 2008-2009
January	0	51,260	27,956	N/A	N/A	0	16,894	22,030	N/A	N/A
February	0	51,917	26,074	N/A	-49.78%	0	18,002	133,966	N/A	644.17%
March	0	54,073	28,865	N/A	-46.62%	0	18,228	14,675	N/A	-19.49%
April	0	53,504	25,909	N/A	-51.58%	0	17,996	15,534	N/A	-13.68%
May	0	58,385	30,290	N/A	-48.12%	0	17,505	18,311	N/A	4.60%
June	0	62,080	30,513	N/A	-50.85%	0	23,976	20,698	N/A	-13.67%
July	0	60,580				0	24,285			
August	0	58,839				0	21,734			
September	0	55,259				0	25,059			
October	0	66,720				0	34,056			
November	0	51,247				0	18,807			
December	0	57,158				0	15,869			
Total thru June	0	331,219	169,607	N/A	-48.79%	0	112,601	225,214	N/A	100.01%

AIRTRAN

	ENPLANED CARGO & FREIGHT			% Change	% Change	DEPLANED CARGO & FREIGHT			% Change	% Change
	1987	2008	2009	87-2009	2008-2009	1987	2008	2009	87-2009	2008-2009
January	0	0	0	N/A	N/A	0	0	0	0	N/A
February	0	0	0	N/A	N/A	0	0	0	0	N/A
March	0	0	0	N/A	N/A	0	0	0	0	N/A
April	0	0	0	N/A	N/A	0	0	0	0	N/A
May	0	0	0	N/A	N/A	0	0	0	0	N/A
June	0	0	0	N/A	N/A	0	0	0	0	N/A
July	0	0	0			0	0	0		
August	0	0	0			0	0	0		
September	0	0	0			0	0	0		
October	0	0	0			0	0	0		
November	0	0	0			0	0	0		
December	0	0	0			0	0	0		
Total thru June	0	0	0	N/A	N/A	0	0	0	N/A	N/A

PRIOR CARRIERS

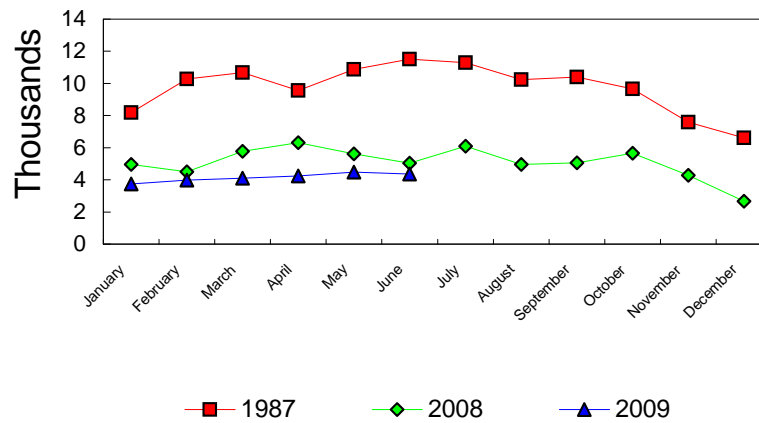
	ENPLANED CARGO & FREIGHT			% Change	% Change	DEPLANED CARGO & FREIGHT			% Change	% Change
	1987	2008	2009	87-2009	2008-2009	1987	2008	2009	87-2009	2008-2009
January	3,540	0	104	-97.06%	N/A	15,720	0	0	0	N/A
February	3,272	0	40	-98.78%	N/A	28,748	0	0	0	N/A
March	4,012	0	32	-99.20%	N/A	20,915	0	0	0	N/A
April	3,747	0	45	-98.80%	N/A	30,094	0	6	-99.98%	N/A
May	3,219	0	59	-0.98167133	N/A	28,459	0	14	-99.95%	N/A
June	9,901	195	0	-100.00%	N/A	27,135	0	18	-99.93%	N/A
July	5,316	0	0			21,325	0	0		
August	6,299	157	0			19,064	0	0		
September	6,509	130	0			23,494	0	0		
October	7,148	238	0			26,707	0	0		
November	10,254	59	0			22,817	0	0		
December	3,905	119	0			19,423	0	0		
Total thru June	27,691	195	280	N/A	N/A	151,071	0	38	N/A	N/A

OPERATIONS STATISTICAL COMPARISON

FOR YEARS 1987, 2008 & 2009

	1987 OPERATIONS	2008 OPERATIONS	2009 OPERATIONS	CHANGE 1987/2009	CHANGE 2008/2009
January	8,177	4,961	3,739	-54.27%	-24.63%
February	10,270	4,491	3,981	-61.24%	-11.36%
March	10,677	5,784	4,095	-61.65%	-29.20%
April	9,562	6,307	4,248	-55.57%	-32.65%
May	10,870	5,611	4,480	-58.79%	-20.16%
June	11,514	5,033	4,355	-62.18%	-13.47%
July	11,296	6,096			
August	10,240	4,965			
September	10,389	5,050			
October	9,656	5,651			
November	7,592	4,273			
December	6,608	2,660			
Total Through June	61,070	32,187	24,898	-59.23%	-22.65%
ANNUAL TOTAL	116,851	60,882	24,898		

OPERATIONS Pre-Authority vs 2008 & 2009



**BISHOP INTERNATIONAL AIRPORT
AIR TRAFFIC RECORD 2009**

MONTH	ITINERANT AIRCRAFT					LOCAL AIRCRAFT			TOTAL OPERATIONS	CUMULATIVE OPERATIONS
	AIR CARRIER	AIR TAXI	GENERAL AVIATION	MILITARY	TOTAL ITINERANT	CIVILIAN	MILITARY	TOTAL LOCAL		
JANAURY	821	931	827	6	2,585	1,154		1,154	3,739	3,739
FEBRUARY	759	767	866	13	2,405	1,576		1,576	3,981	7,720
MARCH	927	754	1,237	5	2,923	1,172		1,172	4,095	11,815
APRIL	887	828	1,096	19	2,830	1,418		1,418	4,248	16,063
MAY	848	730	1,566	26	3,170	1,308	2	1,310	4,480	20,543
JUNE	773	917	1,344	21	3,055	1,300		1,300	4,355	24,898
JULY					0			0	0	0
AUGUST					0			0	0	0
SEPTEMBER					0			0	0	0
OCTOBER					0			0	0	0
NOVEMBER					0			0	0	0
DECEMBER					0			0	0	0
TOTALS	5,015	4,927	6,936	90	16,968	7,928	2	7,930	24,898	