

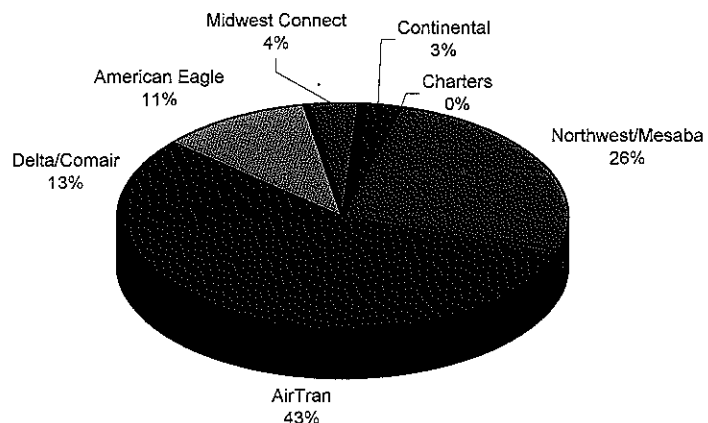
**BISHOP INTERNATIONAL AIRPORT AUTHORITY
AIRLINE PASSENGER COMPARISON
CALENDAR YEARS 2007 AND 2008**

ENPLANEMENTS	NORTHWEST/MESABA			AIRTRAN			DELTA/COMAIR/ASA			AMERICAN EAGLE		
	2007	2008	% Change	2007	2008	% Change	2007	2008	% Change	2007	2008	% Change
January	11,584	12,291	6.10%	19,586	19,049	-2.74%	5,055	6,850	35.51%	3,455	5,916	71.23%
February	13,256	11,684	-11.86%	20,853	23,711	13.71%	5,446	5,909	8.50%	3,185	4,989	56.64%
March	20,531	16,416	-20.04%	22,840	23,928	4.76%	5,952	6,878	15.56%	3,488	5,691	63.16%
April	16,599			19,438			5,819			3,598		
May	11,994			15,444			5,120			5,121		
June	12,309			15,665			5,807			5,004		
July	12,672			17,557			5,800			5,085		
August	12,099			17,795			5,951			5,080		
September	10,845			14,536			6,085			5,935		
October	11,028			17,086			6,012			6,325		
November	12,073			19,301			6,193			6,427		
December	12,503			19,882			5,444			5,836		
Through March	45,371	40,391	-10.98%	63,279	66,688	5.39%	16,453	19,637	19.35%	10,128	16,596	63.86%

ENPLANEMENTS	MIDWEST CONNECT			CONTINENTAL			CHARTERS		
	2007	2008	% Change	2007	2008	% Change	2007	2008	% Change
January	1,032	1,640	58.91%	916	1,340	46.29%	122	159	30.33%
February	1,005	1,642	63.38%	1,148	1,497	30.40%	0	0	N/A
March	1,185	2,565	116.46%	1,242	1,751	40.98%	0	0	
April	1,569			1,148			163		
May	1,518			1,087			0		
June	1,770			1,219			0		
July	1,927			1,198			0		
August	2,271			1,638			0		
September	1,816			925			157		
October	1,712			1,465			0		
November	1,741			1,460			149		
December	1,579			1,526			0		
Through March	3,222	5,847	81.47%	3,306	4,588	38.78%	122	159	N/A

**ENPLANEMENT SHARE BY AIRLINE
Calendar Year 2008**

Latest National Average 5.0% Feb-08
2008 National Trend February



	TOTAL		
	2007	2008	% Change
January	41,750	47,245	13.16%
February	44,893	49,432	10.11%
March	55,238	57,229	3.60%
April	48,334	0	
May	40,284	0	
June	41,774	0	
July	44,239	0	
August	44,834	0	
September	40,299	0	
October	43,628	0	
November	47,344	0	
December	46,770	0	
Through March	141,881	153,906	8.48%
Total Year	539,387	153,906	

- Northwest/Mesaba ■ AirTran ■ Delta/Comair
- American Eagle ■ Midwest Connect ■ Continental
- Charters

**BISHOP INTERNATIONAL AIRPORT AUTHORITY
AIRLINE LOAD FACTOR ANALYSIS**

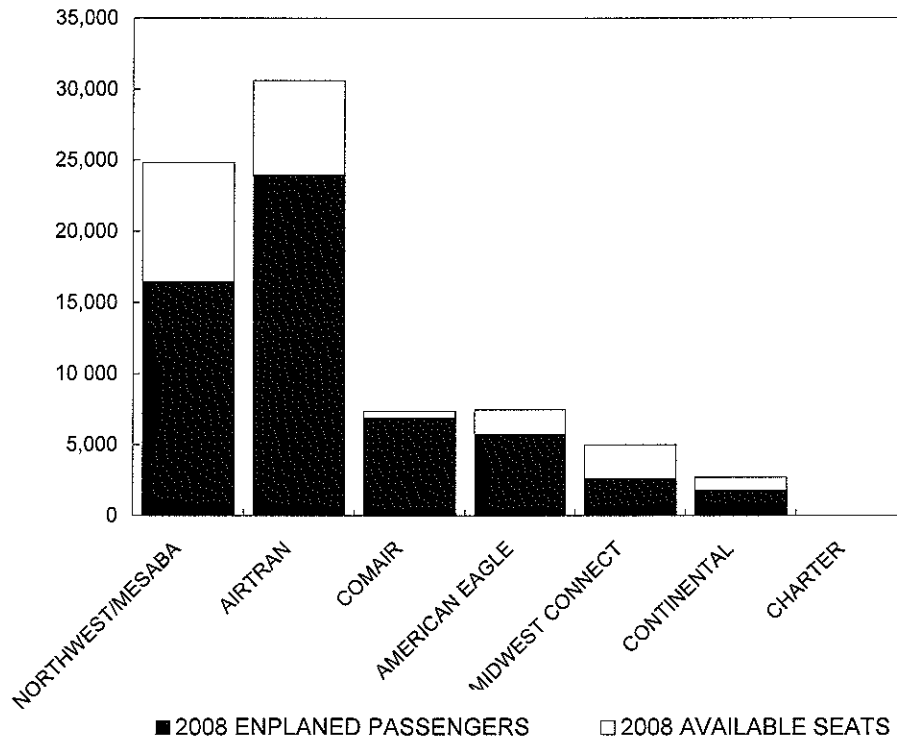
March-08

2007

2008

AIRLINE	2007			2008		
	AVAILABLE SEATS	ENPLANED PAX	LOAD FACTOR	AVAILABLE SEATS	ENPLANED PAX	LOAD FACTOR
NORTHWEST/MESABA	27,400	20,531	74.93%	24,821	16,416	66.14%
AIRTRAN	26,878	22,840	84.98%	30,595	23,928	78.21%
COMAIR	7,350	5,952	80.98%	7,350	6,878	93.58%
AMERICAN EAGLE	4,294	3,488	81.23%	7,460	5,691	76.29%
MIDWEST CONNECT	1,748	1,185	67.79%	4,982	2,565	51.49%
CONTINENTAL	1,615	1,242	76.90%	2,701	1,751	64.83%
CHARTER	0	0	N/A	0	0	N/A
ALL AIRLINES	69,285	55,238	79.73%	77,909	57,229	73.46%

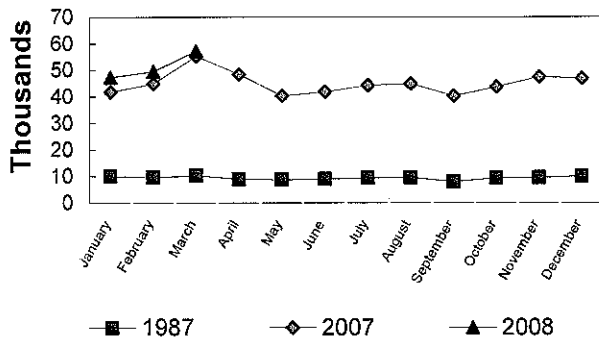
**Enplanements vs Available Seats
Current Month**



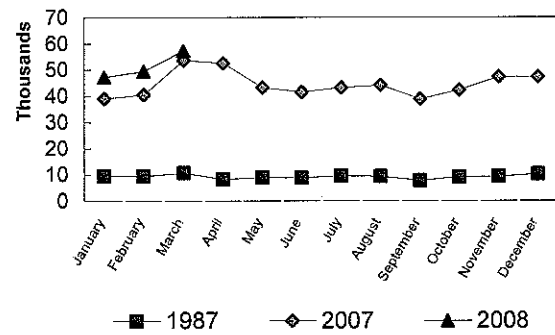
**BISHOP INTERNATIONAL AIRPORT
PASSENGER STATISTICAL COMPARISON
FOR THE YEARS 1987, 2007, 2008**

	ENPLANED PASSENGERS			% CHANGE	% CHANGE
	1987	2007	2008	1987/2008	2007/2008
January	10,008	41,750	47,245	372.07%	13.16%
February	9,544	44,893	49,432	417.94%	10.11%
March	10,287	55,238	57,229	456.32%	3.60%
April	8,967	48,334			
May	8,685	40,284			
June	8,891	41,774			
July	9,372	44,239			
August	9,586	44,834			
September	8,038	40,299			
October	9,350	43,628			
November	9,402	47,344			
December	10,010	46,770			
Total thru March	29,839	141,881	153,906	415.79%	8.48%
Total for Year	112,140	539,387	153,906		

**ENPLANEMENT COMPARISON
Pre-Authority vs 2007 & 2008**



**DEPLANEMENT COMPARISON
Pre-Authority vs 2007 & 2008**



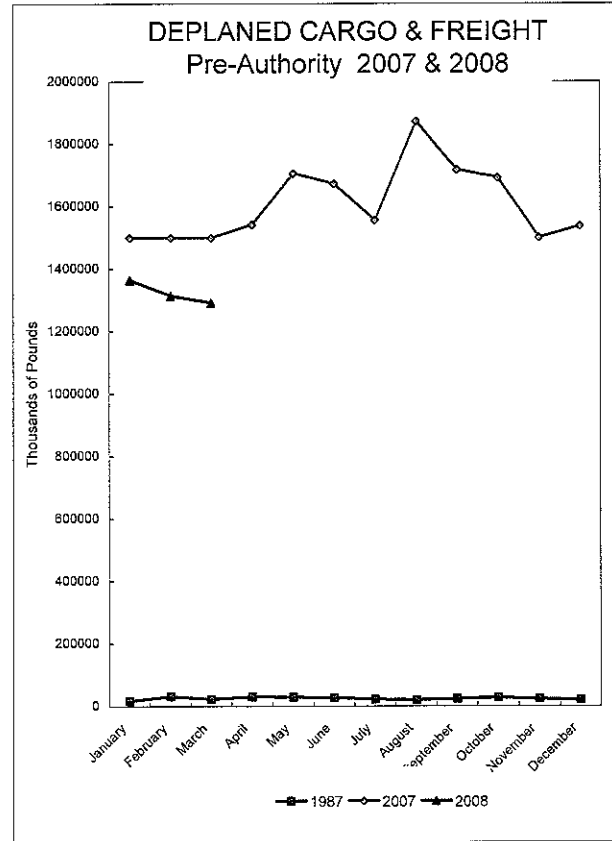
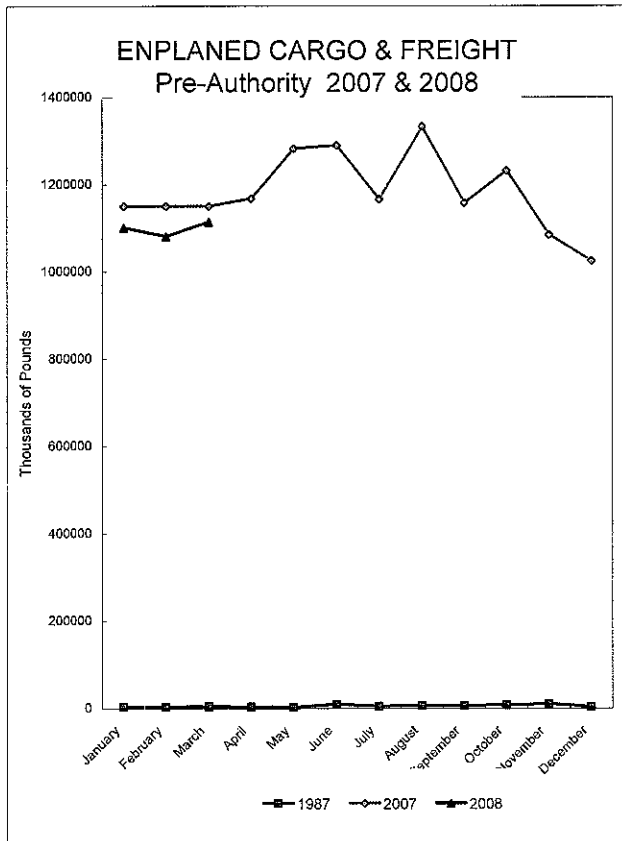
	DEPLANED PASSENGERS			% CHANGE	% CHANGE
	1987	2007	2008	1987/2008	2007/2008
January	9,542	39,038	41,948	339.61%	7.45%
February	9,380	40,531	44,852	378.17%	10.66%
March	10,646	53,615	55,515	421.46%	3.54%
April	8,139	52,500			
May	8,969	43,252			
June	8,795	41,467			
July	9,592	43,142			
August	9,331	44,039			
September	7,740	38,844			
October	9,005	42,190			
November	9,235	47,179			
December	10,114	47,236			
Total thru March	29,568	133,184	142,315	381.31%	6.86%
Total for Year	110,488	533,033	142,315		

Total all current month	59,407	275,065	296,221
Total all for the year	222,628	1,072,420	296,221

BISHOP INTERNATIONAL AIRPORT AIR CARGO AND FREIGHT COMPARISON Pre-Authority(1987) 2007 & 2008

TOTAL AIR CARGO AND FREIGHT

	ENPLANED CARGO & FREIGHT			% Change 87-2008	% Change 2007-2008	DEPLANED CARGO & FREIGHT			% Change 87-2008	% Change 2007-2008
	1987	2007	2008			1987	2007	2008		
January	3,660	1,149,961	1,100,987	29981.61%	-4.26%	16,557	1,498,387	1,362,603	8129.77%	-9.06%
February	3,582	1,149,961	1,080,738	30071.36%	-6.02%	30,397	1,498,387	1,312,330	4217.30%	-12.42%
March	4,268	1,149,961	1,114,173	26005.27%	-3.11%	23,013	1,498,387	1,290,406	5507.29%	-13.88%
April	3,747	1,167,188				30,094	1,540,397			
May	3,219	1,281,888				28,459	1,704,795			
June	9,901	1,288,979				27,135	1,671,216			
July	5,316	1,166,089				21,325	1,554,806			
August	6,299	1,332,515				19,064	1,871,760			
September	6,509	1,156,771				23,494	1,716,339			
October	7,148	1,231,577				26,707	1,689,770			
November	10,254	1,083,919				22,817	1,468,446			
December	3,905	1,024,042				19,423	1,535,041			
Total thru March	11,510	3,668,491	3,295,898	28535.08%	-10.16%	69,967	5,034,680	3,965,339	5567.44%	-21.24%
Annual Total	67,808	14,182,851	3,295,898			288,485	19,277,731	3,965,339		



FEDEX

	ENPLANED CARGO & FREIGHT					DEPLANED CARGO & FREIGHT				
	1987	2007	2008	% Change 87-2008	% Change 2007-2008	1987	2007	2008	% Change 87-2008	% Change 2007-2008
January	0	830 801	870 732	N/A	4 81%	0	1 032 796	976 067	N/A	-5 49%
February	0	821 951	839 826	N/A	2 17%	0	1 061 573	986 041	N/A	-7 12%
March	0	988 429	832 812	N/A	-15 74%	0	1 370 078	966 259	N/A	-29 47%
April	0	859 143				0	1 040 545			
May	0	956 377				0	1 154 671			
June	0	890 057				0	1 151 579			
July	0	844 611				0	1 070 546			
August	0	973 712				0	1 297 061			
September	0	853 949				0	1 154 353			
October	0	954 218				0	1 255 642			
November	0	839 661				0	1 088 713			
December	0	770 507				0	1 133 242			
Total thru March	0	2,641,181	2,543,370	N/A	-3.70%	0	3,464,447	2,928,367	N/A	-15.47%

GVA

	ENPLANED CARGO & FREIGHT					DEPLANED CARGO & FREIGHT				
	1987	2007	2008	% Change 87-2008	% Change 2007-2008	1987	2007	2008	% Change 87-2008	% Change 2007-2008
January	0	490	40	N/A	-91 84%	0	3 569	0	N/A	N/A
February	0	11 543	8 976	N/A	N/A	0	53 740	2 060	N/A	N/A
March	0	6 094	1 008	N/A	-83 46%	0	40 990	31	N/A	
April	0	1 150				0	6 267			
May	0	3 288				0	26 052			
June	0	18 727				0	10 546			
July	0	35				0	17 850			
August	0	2 405				0	49 271			
September	0	1 644				0	39 528			
October	0	16 988				0	3 588			
November	0	7 067				0	0			
December	0	0				0	1 822			
Total thru March	0	18,127	10,024	N/A	-44.70%	0	98,299	2,091	N/A	-97.87%

AIRBORNE

	ENPLANED CARGO & FREIGHT					DEPLANED CARGO & FREIGHT				
	1987	2007	2008	% Change 87-2008	% Change 2007-2008	1987	2007	2008	% Change 87-2008	% Change 2007-2008
January	0	283 934	158 619	N/A	-44 14%	0	448 441	360 700	N/A	-19 57%
February	0	283 892	153 865	N/A	-45 80%	0	445 594	294 741	N/A	-33 85%
March	0	335 696	201 341	N/A	-40 02%	0	532 497	298 884	N/A	-43 87%
April	0	270 953				0	476 437			
May	0	280 286				0	507 390			
June	0	312 803				0	483 297			
July	0	261 917				0	443 037			
August	0	289 595				0	499 704			
September	0	240 733				0	499 383			
October	0	177 074				0	399 428			
November	0	159 861				0	379 896			
December	0	157 741				0	370 556			
Total thru March	0	903,522	513,825	N/A	-43.13%	0	1,426,532	954,325	N/A	-33.10%

AMERICAN EAGLE

	ENPLANED CARGO & FREIGHT					DEPLANED CARGO & FREIGHT				
	1987	2007	2008	% Change 87-2008	% Change 2007-2008	1987	2007	2008	% Change 87-2008	% Change 2007-2008
January	0	7	258	N/A	N/A	0	134	77	N/A	N/A
February	0	0	7	N/A	N/A	0	254	166	N/A	N/A
March	0	0	172	N/A	N/A	0	195	100	N/A	N/A
April	0	0				0	295			
May	0	0				0	0			
June	0	0				0	367			
July	0	43				0	0			
August	0	0				0	0			
September	0	26				0	168			
October	0	227				0	0			
November	0	38				0	11			
December	0	16				0	9			
Total thru March	0	7	437	N/A	N/A	0	583	343	N/A	N/A

NORTHWEST (MESABA)

	ENPLANED CARGO & FREIGHT					DEPLANED CARGO & FREIGHT				
	1987	2007	2008	% Change 87-2008	% Change 2007-2008	1987	2007	2008	% Change 87-2008	% Change 2007-2008
January	120	180	101	-15.83%	-43.89%	837	659	67	-92.00%	-89.83%
February	310	433	205	-33.87%	-52.66%	1,649	189	240	-85.45%	26.98%
March	256	284	267	4.30%	-5.99%	2,098	1,117	43	-97.95%	-96.15%
April	0	205				0	1,580			
May	0	119				0	121			
June	0	391				0	133			
July	0	5				0	42			
August	0	122				0	283			
September	0	363				0	591			
October	0	17				0	201			
November	0	136				0	194			
December	0	74				0	245			
Total thru March	686	897	573	-16.47%	-36.12%	4,584	1,965	350	-92.36%	-82.19%

MIDWEST CONNECT

	ENPLANED CARGO & FREIGHT					DEPLANED CARGO & FREIGHT				
	1987	2007	2008	% Change 87-2008	% Change 2007-2008	1987	2007	2008	% Change 87-2008	% Change 2007-2008
January	0	0	0	N/A	N/A	0	15	500	N/A	3233.33%
February	0	0	0	N/A	N/A	0	530	846	N/A	59.62%
March	0	0	0	N/A	N/A	0	13	249	N/A	1815.38%
April	0	0				0	788			
May	0	0				0	322			
June	0	0				0	595			
July	0	0				0	415			
August	0	0				0	499			
September	0	0				0	200			
October	0	0				0	350			
November	0	0				0	570			
December	0	0				0	188			
Total thru March	0	0	0	N/A	N/A	0	558	1,595	N/A	185.84%

EAGLE AIR CARGO

	ENPLANED CARGO & FREIGHT					DEPLANED CARGO & FREIGHT				
	1987	2007	2008	% Change 87-2008	% Change 2007-2008	1987	2007	2008	% Change 87-2008	% Change 2007-2008
January	0	0	19977	N/A	N/A	0	0	8,298	N/A	N/A
February	0	0	25942	N/A	N/A	0	0	10,234	N/A	N/A
March	0	0	24500	N/A	N/A	0	0	6,612	N/A	N/A
April	0	0				0	0			
May	0	0				0	0			
June	0	0				0	0			
July	0	0				0	0			
August	0	0				0	0			
September	0	6765				0	2,816			
October	0	27136				0	10,334			
November	0	24204				0	8,287			
December	0	31666				0	12,673			
Total thru March	0	0	70,419	N/A	N/A	0	0	25,144	N/A	N/A

CSA Air, Inc.

	ENPLANED CARGO & FREIGHT					DEPLANED CARGO & FREIGHT				
	1987	2007	2008	% Change 87-2008	% Change 2007-2008	1987	2007	2008	% Change 87-2008	% Change 2007-2008
January	0	34,549	51,260	N/A	48.37%	0	12,773	16,894	N/A	32.26%
February	0	34,424	51,917	N/A	50.82%	0	15,123	18,002	N/A	19.04%
March	0	35,784	54,073	N/A	51.11%	0	14,400	18,228	N/A	26.58%
April	0	35,737				0	14,485			
May	0	41,818				0	16,239			
June	0	67,001				0	24,699			
July	0	59,178				0	18,597			
August	0	66,681				0	24,942			
September	0	53,291				0	19,300			
October	0	55,917				0	20,227			
November	0	52,952				0	20,775			
December	0	64,038				0	16,306			
Total thru March	0	104,757	157,250	N/A	50.11%	0	42,296	53,124	N/A	25.60%

AIRTRAN

	ENPLANED CARGO & FREIGHT			% Change		DEPLANED CARGO & FREIGHT			% Change	
	1987	2007	2008	87-2008	2007-2008	1987	2007	2008	87-2008	2007-2008
January	0	0	0	N/A	N/A	0	0	0	N/A	N/A
February	0	0	0	N/A	N/A	0	0	0	N/A	N/A
March	0	0	0	N/A	N/A	0	0	0	N/A	N/A
April	0	0				0	0			
May	0	0				0	0			
June	0	0				0	0			
July	0	0				0	0			
August	0	0				0	0			
September	0	0				0	0			
October	0	0				0	0			
November	0	0				0	0			
December	0	0				0	0			
Total thru March	0	0	0	N/A	N/A	0	0	0	N/A	N/A

PRIOR CARRIERS

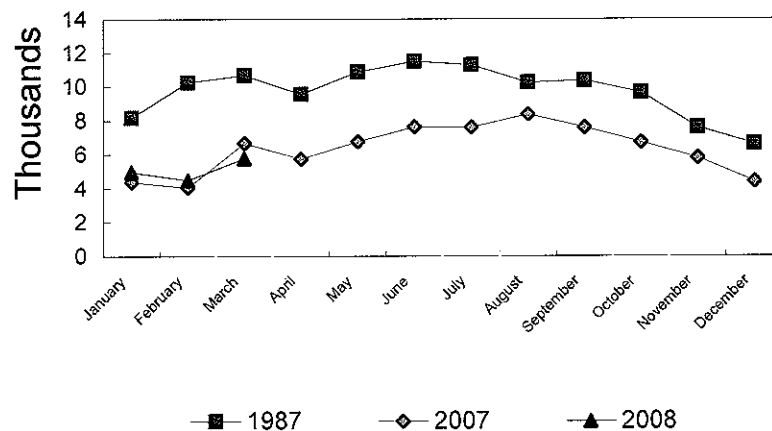
	ENPLANED CARGO & FREIGHT			% Change		DEPLANED CARGO & FREIGHT			% Change	
	1987	2007	2008	87-2008	2007-2008	1987	2007	2008	87-2008	2007-2008
January	3 540	0	0	N/A	N/A	15 720	0	0	N/A	N/A
February	3 272	0	0	N/A	N/A	28 748	0	0	N/A	N/A
March	4 012	0	0	N/A	N/A	20 915	0	0	N/A	N/A
April	3 747	0				30 094	0			
May	3 219	0				28 459	0			
June	9 901	0				27 135	0			
July	5 316	300				21 325	4 319			
August	6 299	0				19 064	0			
September	6 509	0				23 494	0			
October	7 148	0				26 707	0			
November	10 254	0				22 817	0			
December	3 905	0				19 423	0			
Total thru March	10,824	0	0	N/A	N/A	65,383	0	0	N/A	N/A

OPERATIONS STATISTICAL COMPARISON

FOR YEARS 1987, 2007 & 2008

	1987 OPERATIONS	2007 OPERATIONS	2008 OPERATIONS	CHANGE 1987/2008	CHANGE 2007/2008
January	8,177	4,383	4,961	-39.33%	13.19%
February	10,270	4,050	4,491	-56.27%	10.89%
March	10,677	6,672	5,784	-45.83%	-13.31%
April	9,562	5,732			
May	10,870	6,763			
June	11,514	7,642			
July	11,296	7,618			
August	10,240	8,382			
September	10,389	7,591			
October	9,656	6,734			
November	7,592	5,804			
December	6,608	4,399			
Total Through March	29,124	15,105	15,236	-47.69%	0.87%
ANNUAL TOTAL	116,851	75,770	15,236		

OPERATIONS
Pre-Authority vs 2007 & 2008



**BISHOP INTERNATIONAL AIRPORT
AIR TRAFFIC RECORD 2008**

MONTH	ITINERANT AIRCRAFT						LOCAL AIRCRAFT				TOTAL OPERATIONS	CUMULATIVE OPERATIONS
	AIR CARRIER	AIR TAXI	GENERAL AVIATION		MILITARY	ITINERANT TOTAL	CIVILIAN	MILITARY	TOTAL LOCAL			
			AVIATION									
JANUARY	1,099	1,209	1,017	8	3,333	1,628			1,628		4,961	4,961
FEBRUARY	986	1,152	1,049	16	3,203	1,288			1,288		4,491	9,452
MARCH	1,099	1,235	1,450	22	3,806	1,978			1,978		5,784	15,236
APRIL					0				0		0	0
MAY					0				0		0	0
JUNE					0				0		0	0
JULY					0				0		0	0
AUGUST					0				0		0	0
SEPTEMBER					0				0		0	0
OCTOBER					0				0		0	0
NOVEMBER					0				0		0	0
DECEMBER					0				0		0	0
TOTALS	3,184	3,596	3,516	46	10,342	4,894	0	0	4,894	0	15,236	