

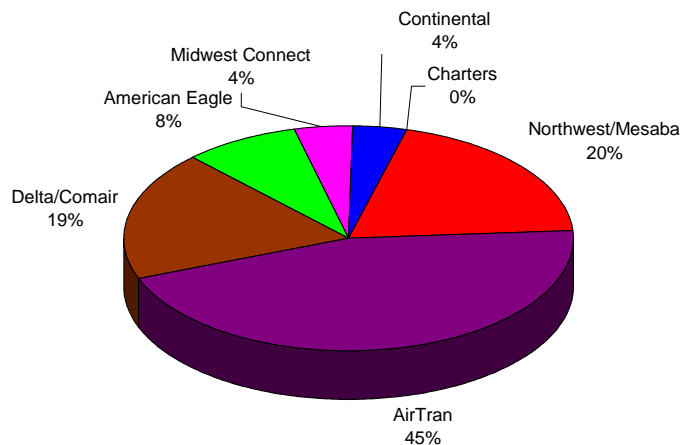
**BISHOP INTERNATIONAL AIRPORT AUTHORITY
AIRLINE PASSENGER COMPARISON
CALENDAR YEARS 2008 AND 2009**

ENPLANEMENTS	NORTHWEST/MESABA			AIRTRAN			DELTA/COMAIR/ASA			AMERICAN EAGLE		
	2008	2009	% Change	2008	2009	% Change	2008	2009	% Change	2008	2009	% Change
January	12,291	8,023	-34.72%	19,049	17,933	-5.86%	6,850	6,764	-1.26%	5,916	3,364	-43.14%
February	11,684	7,456	-36.19%	23,711	18,386	-22.46%	5,909	7,379	24.88%	4,989	3,283	-34.20%
March	16,416	9,003	-45.16%	23,928	19,419	-18.84%	6,878	8,861	28.83%	5,691	3,462	-39.17%
April	12,221			18,054			5,984			5,068		
May	11,505			15,312			5,811			5,066		
June	11,542			15,362			6,677			5,416		
July	11,752			16,037			7,073			6,053		
August	10,856			16,205			6,833			4,612		
September	8,821			11,372			7,118			3,147		
October	8,461			16,529			7,939			3,422		
November	8,421			16,752			7,154			3,121		
December	10,045			16,772			7,564			3,057		
Through March	40,391	24,482	-39.39%	66,688	55,738	-16.42%	19,637	23,004	17.15%	16,596	10,109	-39.09%

ENPLANEMENTS	MIDWEST CONNECT			CONTINENTAL			CHARTERS		
	2008	2009	% Change	2008	2009	% Change	2008	2009	% Change
January	1,640	1,527	-6.89%	1,340	1,227	-8.43%	159	151	-5.03%
February	1,642	1,692	3.05%	1,497	1,630	8.88%	0	0	N/A
March	2,565	1,852	-27.80%	1,751	1,944	11.02%	0	0	N/A
April	2,794			1,780			159		
May	2,895			1,853			0		
June	3,137			1,675			0		
July	2,948			1,717			0		
August	2,646			1,922			0		
September	1,990			1,438			0		
October	1,810			1,401			157		
November	1,626			1,158			0		
December	2,088			1,575			0		
Through March	5,847	5,071	-13.27%	4,588	4,801	4.64%	159	151	N/A

Latest Stats.	<u>Dec 08</u>	<u>Jan - Dec 08</u>
National avg.	-5.71%	-4.31%
Bishop Airport	-12.12%	-2.15%

**ENPLANEMENT SHARE BY AIRLINE
Calendar Year 2009**



	TOTAL		
	2008	2009	% Change
January	47,245	38,989	-17.47%
February	49,432	39,826	-19.43%
March	57,229	44,541	-22.17%
April	46,060	0	
May	42,442	0	
June	43,809	0	
July	45,580	0	
August	43,074	0	
September	33,886	0	
October	39,719	0	
November	38,232	0	
December	41,101	0	
Through March	153,906	123,356	-19.85%
Total Year	527,809	123,356	

- Northwest/Mesaba
- AirTran
- Delta/Comair
- American Eagle
- Midwest Connect
- Continental
- Charters

**BISHOP INTERNATIONAL AIRPORT AUTHORITY
AIRLINE LOAD FACTOR ANALYSIS**

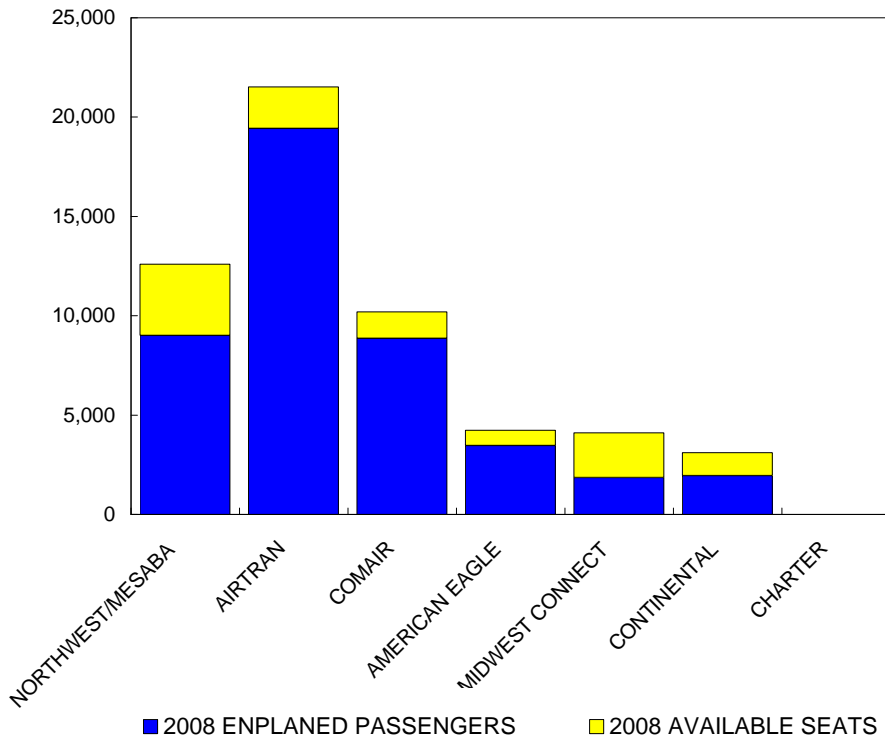
March-09

2008

2009

AIRLINE	AVAILABLE SEATS	ENPLANED PAX	LOAD FACTOR	AVAILABLE SEATS	ENPLANED PAX	LOAD FACTOR
NORTHWEST/MESABA	24,821	16,416	66.14%	12,590	9,003	71.51%
AIRTRAN	30,595	23,928	78.21%	21,528	19,419	90.20%
COMAIR	7,350	6,878	93.58%	10,200	8,861	86.87%
AMERICAN EAGLE	7,460	5,691	76.29%	4,229	3,462	81.86%
MIDWEST CONNECT	4,982	2,565	51.49%	4,100	1,852	45.17%
CONTINENTAL	2,701	1,751	64.83%	3,108	1,944	62.55%
CHARTER	0	0	N/A	0	0	N/A
ALL AIRLINES	77,909	57,229	73.46%	55,755	44,541	79.89%

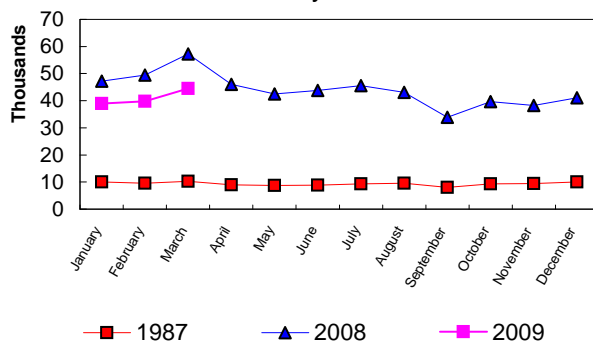
**Enplanements vs Available Seats
Current Month**



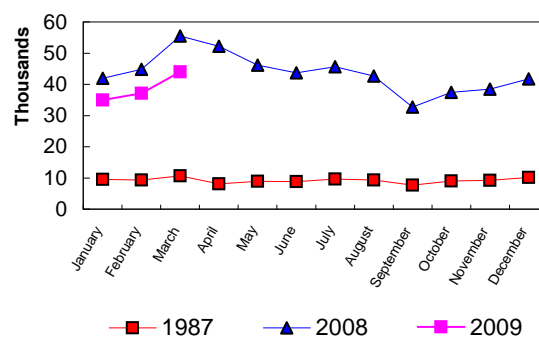
**BISHOP INTERNATIONAL AIRPORT
PASSENGER STATISTICAL COMPARISON
FOR THE YEARS 1987, 2008, 2009**

	ENPLANED PASSENGERS			% CHANGE	% CHANGE
	1987	2008	2009	1987/2009	2008/2009
January	10,008	47,245	38,989	289.58%	-17.47%
February	9,544	49,432	39,826	317.29%	-19.43%
March	10,287	57,229	44,541	332.98%	-22.17%
April	8,967	46,060			
May	8,685	42,442			
June	8,891	43,809			
July	9,372	45,580			
August	9,586	43,074			
September	8,038	33,886			
October	9,350	39,719			
November	9,402	38,232			
December	10,010	41,101			
Total thru March	29,839	153,906	123,356	313.41%	-19.85%
Total for Year	112,140	527,809	123,356		

ENPLANEMENT COMPARISON
Pre-Authority vs 2008 & 2009



DEPLANEMENT COMPARISON
Pre-Authority vs 2008 & 2009



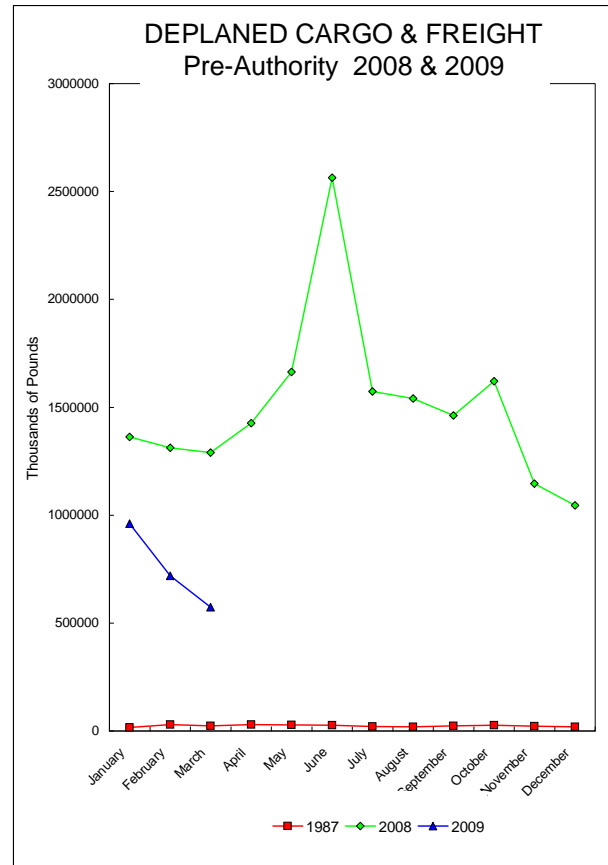
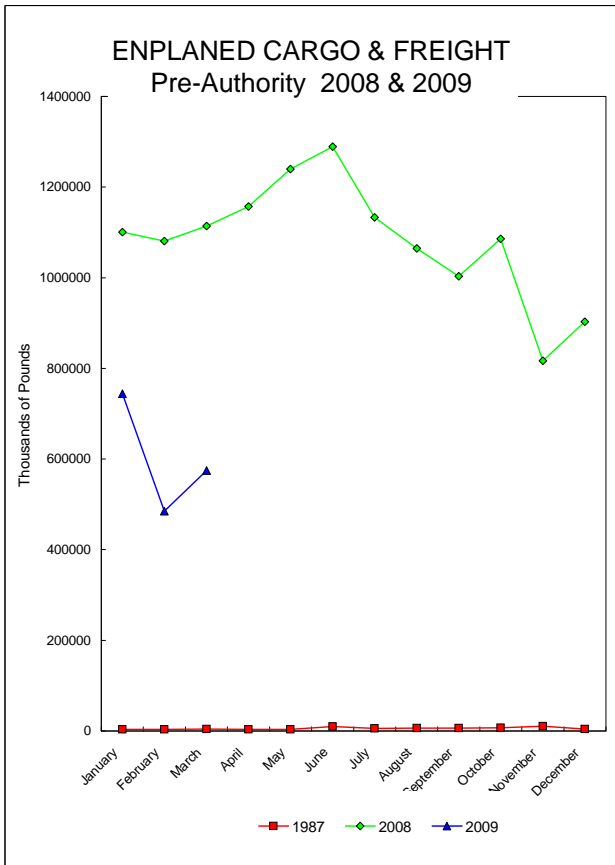
	DEPLANED PASSENGERS			% CHANGE	% CHANGE
	1987	2008	2009	1987/2009	2008/2009
January	9,542	41,948	35,013	266.94%	-16.53%
February	9,380	44,852	37,122	295.76%	-17.23%
March	10,646	55,515	43,994	313.24%	-20.75%
April	8,139	52,171			
May	8,969	46,110			
June	8,795	43,716			
July	9,592	45,689			
August	9,331	42,693			
September	7,740	32,667			
October	9,005	37,478			
November	9,235	38,462			
December	10,114	41,703			
Total thru March	29,568	142,315	116,129	292.75%	-18.40%
Total for Year	110,488	523,004	116,129		

Total all current month	59,407	296,221	239,485
Total all for the year	222,628	1,050,813	239,485

BISHOP INTERNATIONAL AIRPORT AIR CARGO AND FREIGHT COMPARISON Pre-Authority(1987) 2008 & 2009

TOTAL AIR CARGO AND FREIGHT

	ENPLANED CARGO & FREIGHT			% Change 87-2009	% Change 2008-2009	DEPLANED CARGO & FREIGHT			% Change 87-2009	% Change 2008-2009
	1987	2008	2009			1987	2008	2009		
January	3,660	1,100,987	748,851	20223.80%	-32.44%	16,557	1,362,603	961,215	5705.49%	-29.46%
February	3,582	1,080,738	484,989	13439.61%	-55.12%	30,397	1,312,330	719,359	2266.55%	-45.18%
March	4,268	1,114,173	574,692	13365.14%	-48.42%	23,013	1,290,406	574,292	2395.51%	-55.50%
April	3,747	1,157,137				30,094	1,426,201			
May	3,219	1,239,693				28,459	1,663,538			
June	9,901	1,289,325				27,135	2,564,605			
July	5,316	1,139,001				21,325	1,573,163			
August	6,299	1,064,939				19,064	1,540,210			
September	6,509	1,003,008				23,494	1,462,871			
October	7,148	1,085,746				26,707	1,620,352			
November	10,254	816,594				22,817	1,146,640			
December	3,905	908,172				19,423	1,045,282			
Total thru March	11,510	3,295,898	1,803,532	-15569.28%	-45.28%	69,967	3,965,339	2,254,866	3122.76%	-43.14%
Annual Total	67,808	12,988,513	1,803,532			288,485	18,008,201	2,254,866		



FEDEX

	ENPLANED CARGO & FREIGHT					DEPLANED CARGO & FREIGHT				
	1987	2008	2009	% Change 87-2009	% Change 2008-2009	1987	2008	2009	% Change 87-2009	% Change 2008-2009
January	0	870,732	715,678	N/A	-17.81%	0	976,067	939,152	N/A	-3.78%
February	0	839,826	458,660	N/A	-45.39%	0	986,041	585,302	N/A	-40.64%
March	0	832,812	545,702	N/A	-34.47%	0	966,259	559,596	N/A	-42.09%
April	0	902,615				0	1,041,227			
May	0	887,145				0	1,025,009			
June	0	850,739				0	1,020,445			
July	0	832,637				0	1,081,087			
August	0	774,265				0	1,065,428			
September	0	715,516				0	994,570			
October	0	824,642				0	1,109,449			
November	0	667,959				0	866,734			
December	0	841,807				0	1,029,399			
Total thru March	0	2,543,370	1,720,040	N/A	-32.37%	0	2,928,367	2,084,050	N/A	-28.83%

GVA

	ENPLANED CARGO & FREIGHT					DEPLANED CARGO & FREIGHT				
	1987	2008	2009	% Change 87-2009	% Change 2008-2009	1987	2008	2009	% Change 87-2009	% Change 2008-2009
January	0	40	0	N/A	N/A	0	0	0	N/A	N/A
February	0	8,976	0	N/A	N/A	0	2,060	0	N/A	N/A
March	0	1,008	0	N/A	N/A	0	31	0	N/A	N/A
April	0	1,793				0	0			
May	0	95,081				0	231,046			
June	0	129,326				0	1,074,485			
July	0	0				0	0			
August	0	250				0	6,220			
September	0	11,748				0	10,000			
October	0	10				0	0			
November	0	0				0	0			
December	0	3,910				0	0			
Total thru March	0	10,024	0	N/A	-100.00%	0	2,091	0	N/A	-100.00%

AIRBORNE

	ENPLANED CARGO & FREIGHT					DEPLANED CARGO & FREIGHT				
	1987	2008	2009	% Change 87-2009	% Change 2008-2009	1987	2008	2009	% Change 87-2009	% Change 2008-2009
January	0	158,619	0	N/A	N/A	0	360,700	0	N/A	N/A
February	0	153,865	0	N/A	N/A	0	294,741	0	N/A	N/A
March	0	201,341	0	N/A	N/A	0	298,884	0	N/A	N/A
April	0	169,401				0	357,939			
May	0	159,640				0	380,323			
June	0	246,821				0	445,463			
July	0	239,609				0	467,483			
August	0	231,286				0	445,980			
September	0	219,903				0	432,950			
October	0	194,008				0	476,602			
November	0	96,999				0	260,875			
December	0	0				0	0			
Total thru March	0	513,825	0	N/A	-100.00%	0	954,325	0	N/A	-100.00%

AMERICAN EAGLE

	ENPLANED CARGO & FREIGHT					DEPLANED CARGO & FREIGHT				
	1987	2008	2009	% Change 87-2009	% Change 2008-2009	1987	2008	2009	% Change 87-2009	% Change 2008-2009
January	0	258	63	N/A	-75.58%	0	77	33	N/A	-57.14%
February	0	7	60	N/A	757.14%	0	166	68	N/A	-59.04%
March	0	172	51	N/A	-70.35%	0	100	12	N/A	-88.00%
April	0	123				0	34			
May	0	28				0	53			
June	0	77				0	51			
July	0	46				0	35			
August	0	44				0	44			
September	0	43				0	14			
October	0	54				0	83			
November	0	54				0	117			
December	0	45				0	2			
Total thru March	0	437	174	N/A	N/A	0	343	113	N/A	N/A

NORTHWEST (MESABA)

	ENPLANED CARGO & FREIGHT					DEPLANED CARGO & FREIGHT				
	1987	2008	2009	% Change 87-2009	% Change 2008-2009	1987	2008	2009	% Change 87-2009	% Change 2008-2009
January	120	101	50	-58.33%	-50.50%	837	67	0	-100.00%	N/A
February	310	205	155	-50.00%	-24.39%	1,649	240	0	N/A	N/A
March	256	267	42	-83.59%	-84.27%	2,098	43	9	-99.57%	-79.07%
April	0	231				0	89			
May	0	198				0	179			
June	0	87				0	102			
July	0	129				0	140			
August	0	98				0	623			
September	0	409				0	192			
October	0	74				0	162			
November	0	276				0	7			
December	0	133				0	12			
Total thru March	686	573	247	-63.99%	-56.89%	4,584	350	9	-99.80%	-97.43%

MIDWEST CONNECT

	ENPLANED CARGO & FREIGHT					DEPLANED CARGO & FREIGHT				
	1987	2008	2009	% Change 87-2009	% Change 2008-2009	1987	2008	2009	% Change 87-2009	% Change 2008-2009
January	0	0	0	N/A	N/A	0	500	0	N/A	N/A
February	0	0	0	N/A	N/A	0	846	23	N/A	N/A
March	0	0	0	N/A	N/A	0	249	0	N/A	N/A
April	0	0				0	588			
May	0	0				0	77			
June	0	0				0	83			
July	0	0				0	133			
August	0	0				0	181			
September	0	0				0	86			
October	0	0				0	0			
November	0	0				0	100			
December	0	0				0	0			
Total thru March	0	0	0	N/A	N/A	0	1,595	23	N/A	-98.56%

EAGLE AIR CARGO

	ENPLANED CARGO & FREIGHT					DEPLANED CARGO & FREIGHT				
	1987	2008	2009	% Change 87-2009	% Change 2008-2009	1987	2008	2009	% Change 87-2009	% Change 2008-2009
January	0	19977	0	N/A	N/A	0	8,298	0	N/A	N/A
February	0	25942	0	N/A	N/A	0	10,234	0	N/A	N/A
March	0	24500	0	N/A	N/A	0	6,612	0	N/A	N/A
April	0	29470				0	8,328			
May	0	39216				0	9,346			
June	0	0				0	0			
July	0	0				0	0			
August	0	0				0	0			
September	0	0				0	0			
October	0	0				0	0			
November	0	0				0	0			
December	0	0				0	0			
Total thru March	0	70,419	0	N/A	N/A	0	25,144	0	N/A	N/A

CSA Air, Inc.

	ENPLANED CARGO & FREIGHT					DEPLANED CARGO & FREIGHT				
	1987	2008	2009	% Change 87-2009	% Change 2008-2009	1987	2008	2009	% Change 87-2009	% Change 2008-2009
January	0	51,260	27,956	N/A	N/A	0	16,894	22,030	N/A	N/A
February	0	51,917	26,074	N/A	-49.78%	0	18,002	133,966	N/A	644.17%
March	0	54,073	28,865	N/A	-46.62%	0	18,228	14,675	N/A	-19.49%
April	0	53,504				0	17,996			
May	0	58,385				0	17,505			
June	0	62,080				0	23,976			
July	0	60,580				0	24,285			
August	0	58,839				0	21,734			
September	0	55,259				0	25,059			
October	0	66,720				0	34,056			
November	0	51,247				0	18,807			
December	0	57,158				0	15,869			
Total thru March	0	157,250	82,895	N/A	-47.28%	0	53,124	170,671	N/A	221.27%

AIRTRAN

	ENPLANED CARGO & FREIGHT			% Change	% Change	DEPLANED CARGO & FREIGHT			% Change	% Change
	1987	2008	2009	87-2009	2008-2009	1987	2008	2009	87-2009	2008-2009
January	0	0	0	N/A	N/A	0	0	0	0	N/A
February	0	0	0	N/A	N/A	0	0	0	0	N/A
March	0	0	0	N/A	N/A	0	0	0	0	N/A
April	0	0				0	0			
May	0	0				0	0			
June	0	0				0	0			
July	0	0				0	0			
August	0	0				0	0			
September	0	0				0	0			
October	0	0				0	0			
November	0	0				0	0			
December	0	0				0	0			
Total thru March	0	0	0	N/A	N/A	0	0	0	N/A	N/A

PRIOR CARRIERS

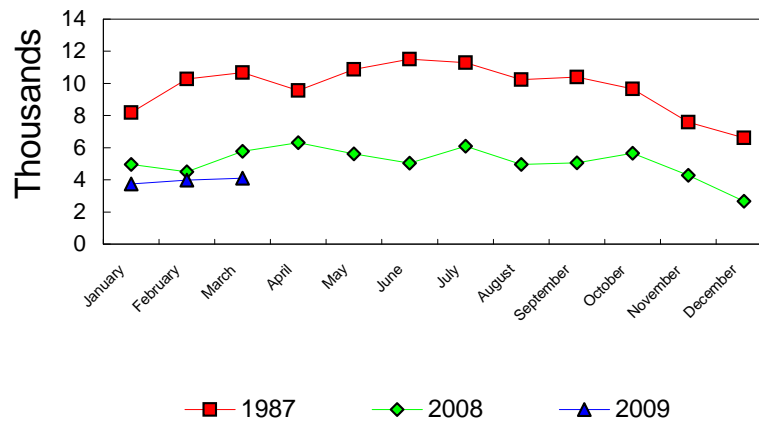
	ENPLANED CARGO & FREIGHT			% Change	% Change	DEPLANED CARGO & FREIGHT			% Change	% Change
	1987	2008	2009	87-2009	2008-2009	1987	2008	2009	87-2009	2008-2009
January	3,540	0	104	-97.06%	N/A	15,720	0	0	0	N/A
February	3,272	0	40	-98.78%	N/A	28,748	0	0	0	N/A
March	4,012	0	32	-99.20%	N/A	20,915	0	0	0	N/A
April	3,747	0				30,094	0			
May	3,219	0				28,459	0			
June	9,901	195				27,135	0			
July	5,316	0				21,325	0			
August	6,299	157				19,064	0			
September	6,509	130				23,494	0			
October	7,148	238				26,707	0			
November	10,254	59				22,817	0			
December	3,905	119				19,423	0			
Total thru March	10,824	0	176	N/A	N/A	65,383	0	0	N/A	N/A

OPERATIONS STATISTICAL COMPARISON

FOR YEARS 1987, 2008 & 2009

	1987 OPERATIONS	2008 OPERATIONS	2009 OPERATIONS	CHANGE 1987/2009	CHANGE 2008/2009
January	8,177	4,961	3,739	-54.27%	-24.63%
February	10,270	4,491	3,981	-61.24%	-11.36%
March	10,677	5,784	4,095	-61.65%	-29.20%
April	9,562	6,307			
May	10,870	5,611			
June	11,514	5,033			
July	11,296	6,096			
August	10,240	4,965			
September	10,389	5,050			
October	9,656	5,651			
November	7,592	4,273			
December	6,608	2,660			
Total Through March	29,124	15,236	11,815	-59.43%	-22.45%
ANNUAL TOTAL	116,851	60,882	11,815		

OPERATIONS Pre-Authority vs 2008 & 2009



**BISHOP INTERNATIONAL AIRPORT
AIR TRAFFIC RECORD 2009**

MONTH	ITINERANT AIRCRAFT					LOCAL AIRCRAFT			TOTAL OPERATIONS	CUMULATIVE OPERATIONS
	AIR CARRIER	AIR TAXI	GENERAL AVIATION	MILITARY	TOTAL ITINERANT	CIVILIAN	MILITARY	TOTAL LOCAL		
JANAURY	821	931	827	6	2,585	1,154		1,154	3,739	3,739
FEBRUARY	759	767	866	13	2,405	1,576		1,576	3,981	7,720
MARCH	927	754	1,237	5	2,923	1,172		1,172	4,095	11,815
APRIL					0			0	0	0
MAY					0			0	0	0
JUNE					0			0	0	0
JULY					0			0	0	0
AUGUST					0			0	0	0
SEPTEMBER					0			0	0	0
OCTOBER					0			0	0	0
NOVEMBER					0			0	0	0
DECEMBER					0			0	0	0
TOTALS	2,507	2,452	2,930	24	7,913	3,902	0	3,902	11,815	