

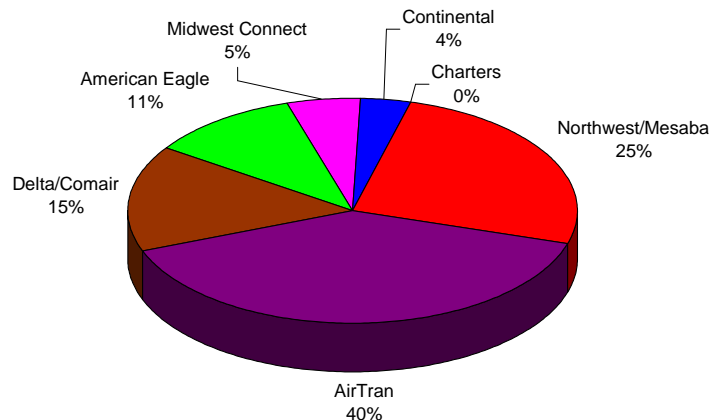
**BISHOP INTERNATIONAL AIRPORT AUTHORITY
AIRLINE PASSENGER COMPARISON
CALENDAR YEARS 2007 AND 2008**

ENPLANEMENTS	NORTHWEST/MESABA			AIRTRAN			DELTA/COMAIR/ASA			AMERICAN EAGLE		
	2007	2008	% Change	2007	2008	% Change	2007	2008	% Change	2007	2008	% Change
January	11,584	12,291	6.10%	19,586	19,049	-2.74%	5,055	6,850	35.51%	3,455	5,916	71.23%
February	13,256	11,684	-11.86%	20,853	23,711	13.71%	5,446	5,909	8.50%	3,185	4,989	56.64%
March	20,531	16,416	-20.04%	22,840	23,928	4.76%	5,952	6,878	15.56%	3,488	5,691	63.16%
April	16,599	12,221	-26.38%	19,438	18,054	-7.12%	5,819	5,984	2.84%	3,598	5,068	40.86%
May	11,994	11,505	-4.08%	15,444	15,312	-0.85%	5,120	5,811	13.50%	5,121	5,066	-1.07%
June	12,309	11,542	-6.23%	15,665	15,362	-1.93%	5,807	6,677	14.98%	5,004	5,416	8.23%
July	12,672	11,752	-7.26%	17,557	16,037	-8.66%	5,800	7,073	21.95%	5,085	6,053	19.04%
August	12,099	10,856	-10.27%	17,795	16,205	-8.94%	5,951	6,833	14.82%	5,080	4,612	-9.21%
September	10,845	8,821	-18.66%	14,536	11,372	-21.77%	6,085	7,118	16.98%	5,935	3,147	-46.98%
October	11,028	8,461	-23.28%	17,086	16,529	-3.26%	6,012	7,939	32.05%	6,325	3,422	-45.90%
November	12,073	8,421	-30.25%	19,301	16,752	-13.21%	6,193	7,154	15.52%	6,427	3,121	-51.44%
December	12,503			19,882			5,444			5,836		
Through November	144,990	123,970	-14.50%	200,101	192,311	-3.89%	63,240	74,226	17.37%	52,703	52,501	-0.38%

ENPLANEMENTS	MIDWEST CONNECT			CONTINENTAL			CHARTERS		
	2007	2008	% Change	2007	2008	% Change	2007	2008	% Change
January	1,032	1,640	58.91%	916	1,340	46.29%	122	159	30.33%
February	1,005	1,642	63.38%	1,148	1,497	30.40%	0	0	N/A
March	1,185	2,565	116.46%	1,242	1,751	40.98%	0	0	N/A
April	1,569	2,794	78.08%	1,148	1,780	55.05%	163	159	-2.45%
May	1,518	2,895	90.71%	1,087	1,853	70.47%	0	0	N/A
June	1,770	3,137	77.23%	1,219	1,675	37.41%	0	0	N/A
July	1,927	2,948	52.98%	1,198	1,717	43.32%	0	0	N/A
August	2,271	2,646	16.51%	1,638	1,922	17.34%	0	0	N/A
September	1,816	1,990	9.58%	925	1,438	55.46%	157	0	N/A
October	1,712	1,810	5.72%	1,465	1,401	-4.37%	0	157	N/A
November	1,741	1,626	-6.61%	1,460	1,158	-20.68%	149	0	N/A
December	1,579			1,526			0		
Through November	17,546	25,693	46.43%	13,446	17,532	30.39%	591	475	N/A

Latest Stats.	<u>Sep 08</u>	<u>Jan-Sep 08</u>
National avg.	-8.90%	-2.80%
Bishop Airport	-3.93%	1.77%

**ENPLANEMENT SHARE BY AIRLINE
Calendar Year 2008**



	TOTAL		
	2007	2008	% Change
January	41,750	47,245	13.16%
February	44,893	49,432	10.11%
March	55,238	57,229	3.60%
April	48,334	46,060	-4.70%
May	40,284	42,442	5.36%
June	41,774	43,809	4.87%
July	44,239	45,580	3.03%
August	44,834	43,074	-3.93%
September	40,299	33,886	-15.91%
October	43,628	39,719	-8.96%
November	47,344	38,232	-19.25%
December	46,770	0	
Through November	492,617	486,708	-1.20%
Total Year	539,387	486,708	

- Northwest/Mesaba
- AirTran
- Delta/Comair
- American Eagle
- Midwest Connect
- Continental
- Charters

**BISHOP INTERNATIONAL AIRPORT AUTHORITY
AIRLINE LOAD FACTOR ANALYSIS**

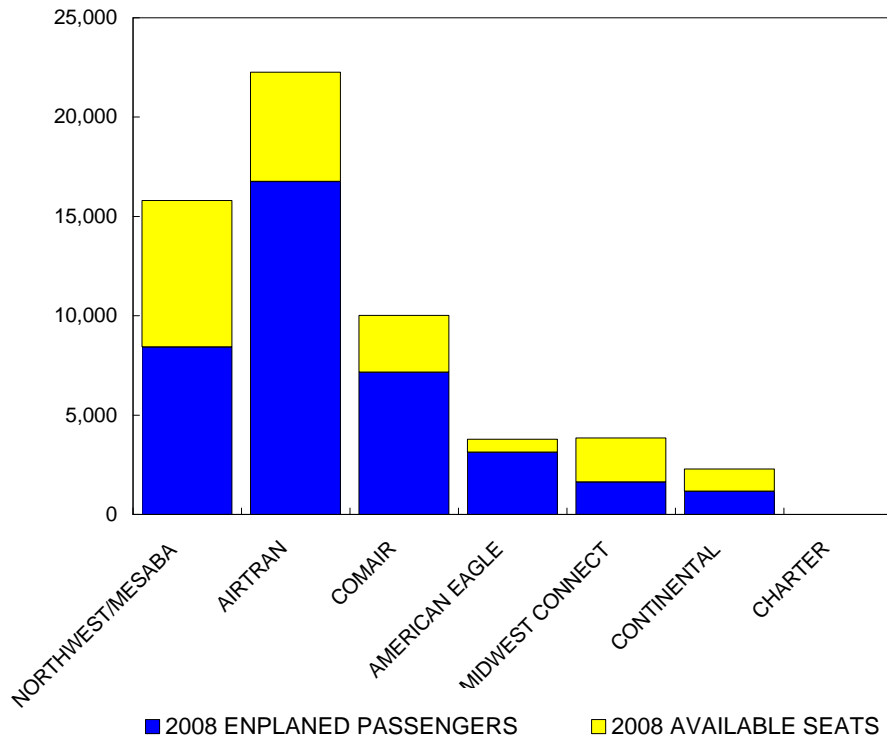
November-08

2007

2008

AIRLINE	AVAILABLE SEATS	ENPLANED PAX	LOAD FACTOR	AVAILABLE SEATS	ENPLANED PAX	LOAD FACTOR
NORTHWEST/MESABA	18,367	12,073	65.73%	15,804	8,421	53.28%
AIRTRAN	25,916	19,301	74.48%	22,260	16,752	75.26%
COMAIR	8,200	6,193	75.52%	10,020	7,154	71.40%
AMERICAN EAGLE	8,716	6,427	73.74%	3,779	3,121	82.59%
MIDWEST CONNECT	3,168	1,741	54.96%	3,850	1,626	42.23%
CONTINENTAL	2,435	1,460	59.96%	2,294	1,158	50.48%
CHARTER	162	149	91.98%	0	0	N/A
ALL AIRLINES	66,964	47,344	70.70%	58,007	38,232	65.91%

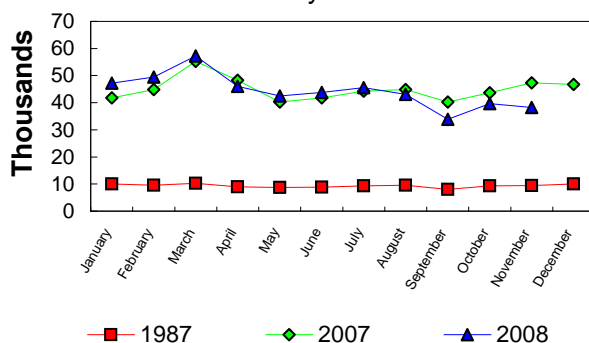
**Enplanements vs Available Seats
Current Month**



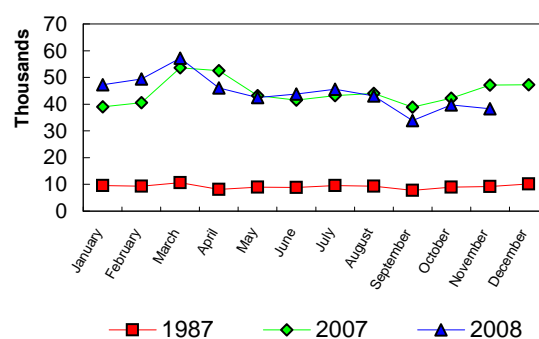
**BISHOP INTERNATIONAL AIRPORT
PASSENGER STATISTICAL COMPARISON
FOR THE YEARS 1987, 2007, 2008**

	ENPLANED PASSENGERS			% CHANGE	% CHANGE
	1987	2007	2008	1987/2008	2007/2008
January	10,008	41,750	47,245	372.07%	13.16%
February	9,544	44,893	49,432	417.94%	10.11%
March	10,287	55,238	57,229	456.32%	3.60%
April	8,967	48,334	46,060	413.66%	-4.70%
May	8,685	40,284	42,442	388.68%	5.36%
June	8,891	41,774	43,809	392.73%	4.87%
July	9,372	44,239	45,580	386.34%	3.03%
August	9,586	44,834	43,074	349.34%	-3.93%
September	8,038	40,299	33,886	321.57%	-15.91%
October	9,350	43,628	39,719	324.80%	-8.96%
November	9,402	47,344	38,232	306.64%	-19.25%
December	10,010	46,770			
Total thru November	102,130	492,617	486,708	376.56%	-1.20%
Total for Year	112,140	539,387	486,708		

ENPLANEMENT COMPARISON
Pre-Authority vs 2007 & 2008



DEPLANEMENT COMPARISON
Pre-Authority vs 2007 & 2008



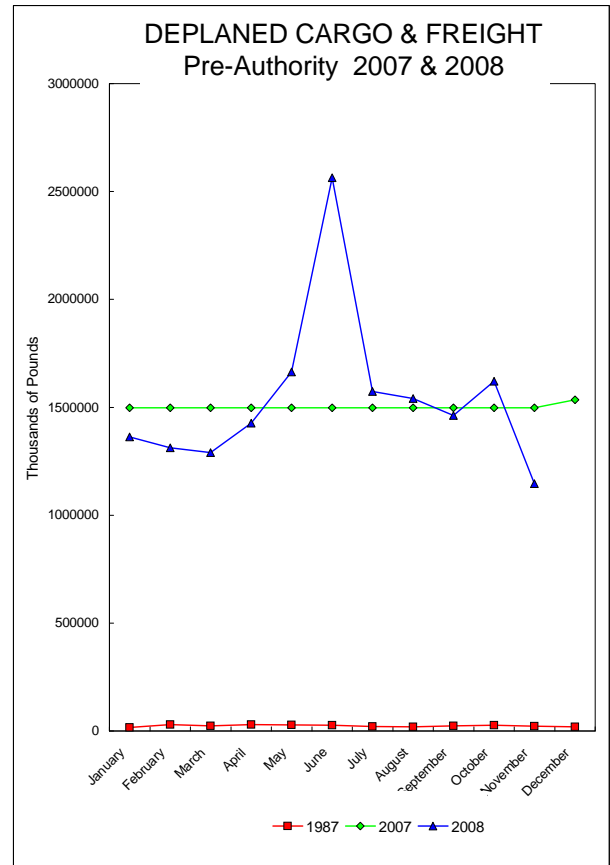
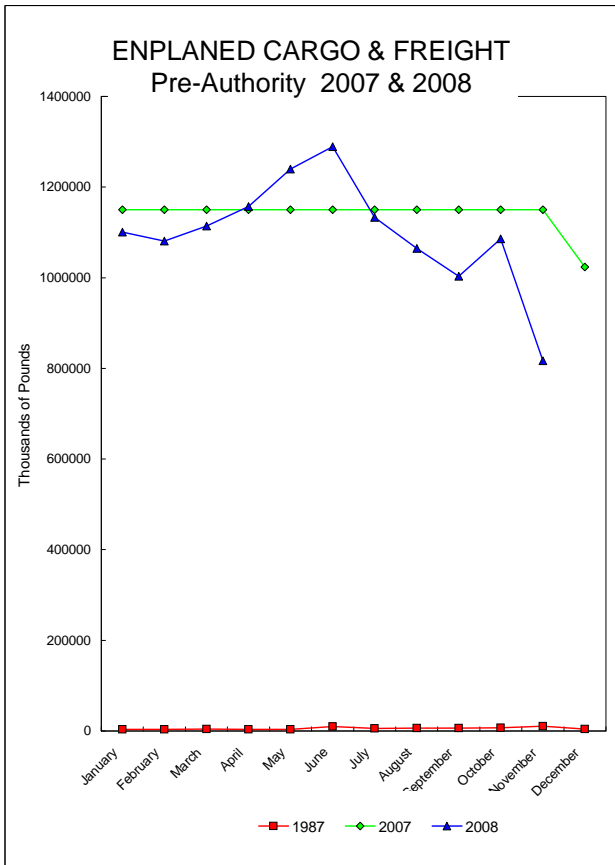
	DEPLANED PASSENGERS			% CHANGE	% CHANGE
	1987	2007	2008	1987/2008	2007/2008
January	9,542	39,038	41,948	339.61%	7.45%
February	9,380	40,531	44,852	378.17%	10.66%
March	10,646	53,615	55,515	421.46%	3.54%
April	8,139	52,500	52,171	541.00%	-0.63%
May	8,969	43,252	46,110	414.10%	6.61%
June	8,795	41,467	43,716	397.06%	5.42%
July	9,592	43,142	45,689	376.32%	5.90%
August	9,331	44,039	42,693	357.54%	-3.06%
September	7,740	38,844	32,667	322.05%	-15.90%
October	9,005	42,190	37,478	316.19%	-11.17%
November	9,235	47,179	38,462	316.48%	-18.48%
December	10,114	47,236			
Total thru November	100,374	485,797	481,301	379.51%	-0.93%
Total for Year	110,488	533,033	481,301		

Total all current month	202,504	978,414	968,009
Total all for the year	222,628	1,072,420	968,009

BISHOP INTERNATIONAL AIRPORT AIR CARGO AND FREIGHT COMPARISON Pre-Authority(1987) 2007 & 2008

TOTAL AIR CARGO AND FREIGHT

	ENPLANED CARGO & FREIGHT			% Change 87-2008	% Change 2007-2008	DEPLANED CARGO & FREIGHT			% Change 87-2008	% Change 2007-2008
	1987	2007	2008			1987	2007	2008		
January	3,660	1,149,961	1,100,987	29981.61%	-4.26%	16,557	1,498,387	1,362,603	8129.77%	-9.06%
February	3,582	1,149,961	1,080,738	30071.36%	-6.02%	30,397	1,498,387	1,312,330	4217.30%	-12.42%
March	4,268	1,149,961	1,114,173	26005.27%	-3.11%	23,013	1,498,387	1,290,406	5507.29%	-13.88%
April	3,747	1,149,961	1,167,137	30781.69%	0.62%	30,094	1,498,387	1,426,201	4639.15%	-4.82%
May	3,219	1,149,961	1,239,693	38411.74%	7.80%	28,459	1,498,387	1,663,538	5745.38%	11.02%
June	9,901	1,149,961	1,289,325	12922.17%	12.12%	27,135	1,498,387	2,564,605	9351.28%	71.16%
July	5,316	1,149,961	1,133,001	21213.04%	-1.47%	21,325	1,498,387	1,573,163	7277.08%	4.99%
August	6,299	1,149,961	1,064,939	16806.48%	-7.39%	19,064	1,498,387	1,540,210	7979.15%	2.79%
September	6,509	1,149,961	1,003,008	15309.56%	-12.78%	23,494	1,498,387	1,462,871	6126.57%	-2.37%
October	7,148	1,149,961	1,085,746	15089.51%	-5.58%	26,707	1,498,387	1,620,352	5967.14%	8.14%
November	10,254	1,149,961	816,594	7863.66%	-28.99%	22,817	1,498,387	1,146,640	4925.38%	-23.48%
December	3,905	1,024,042				19,423	1,535,041			
Total thru November	63,903	13,217,256	12,085,341	18812.01%	-8.56%	269,062	17,902,313	16,962,919	6204.46%	-5.25%
Annual Total	67,808	13,673,613	12,085,341			288,485	18,017,298	16,962,919		



FEDEX

	ENPLANED CARGO & FREIGHT					DEPLANED CARGO & FREIGHT				
	1987	2007	2008	% Change 87-2008	% Change 2007-2008	1987	2007	2008	% Change 87-2008	% Change 2007-2008
January	0	830,801	870,732	N/A	4.81%	0	1,032,796	976,067	N/A	-5.49%
February	0	821,951	839,826	N/A	2.17%	0	1,061,573	986,041	N/A	-7.12%
March	0	988,429	832,812	N/A	-15.74%	0	1,370,078	966,259	N/A	-29.47%
April	0	859,143	902,615	N/A	5.06%	0	1,040,545	1,041,227	N/A	0.07%
May	0	956,377	887,145	N/A	-7.24%	0	1,154,671	1,025,009	N/A	-11.23%
June	0	890,057	850,739	N/A	-4.42%	0	1,151,579	1,020,445	N/A	-11.39%
July	0	844,611	832,637	N/A	-1.42%	0	1,070,546	1,081,087	N/A	0.98%
August	0	973,712	774,265	N/A	-20.48%	0	1,297,061	1,065,428	N/A	-17.86%
September	0	853,949	715,516	N/A	-16.21%	0	1,154,353	994,570	N/A	-13.84%
October	0	954,218	824,642	N/A	-13.58%	0	1,255,642	1,109,449	N/A	-11.64%
November	0	839,661	667,959	N/A	-20.45%	0	1,088,713	866,734	N/A	-20.39%
December	0	770,507				0	1,133,242			
Total thru November	0	9,812,909	8,998,888	N/A	-8.30%	0	12,677,557	11,132,316	N/A	-12.19%

GVA

	ENPLANED CARGO & FREIGHT					DEPLANED CARGO & FREIGHT				
	1987	2007	2008	% Change 87-2008	% Change 2007-2008	1987	2007	2008	% Change 87-2008	% Change 2007-2008
January	0	490	40	N/A	-91.84%	0	3,569	0	N/A	N/A
February	0	11,543	8,976	N/A	N/A	0	53,740	2,060	N/A	N/A
March	0	6,094	1,008	N/A	-83.46%	0	40,990	31	N/A	N/A
April	0	1,150	1,793	N/A	55.91%	0	6,267	0	N/A	N/A
May	0	3,288	95,081	N/A	2791.76%	0	26,052	231,046	N/A	786.86%
June	0	18,727	129,326	N/A	590.59%	0	10,546	1,074,485	N/A	10088.55%
July	0	35	0	N/A	N/A	0	17,850	0	N/A	N/A
August	0	2,405	250	N/A	-89.60%	0	49,271	6,220	N/A	-87.38%
September	0	1,644	11,748	N/A	614.60%	0	39,528	10,000	N/A	-74.70%
October	0	16,988	10	N/A	-99.94%	0	3,588	0	N/A	N/A
November	0	7,067	0	N/A	N/A	0	0	0	N/A	N/A
December	0	0				0	1,822			
Total thru November	0	69,431	248,232	N/A	257.52%	0	251,401	1,323,842	N/A	426.59%

AIRBORNE

	ENPLANED CARGO & FREIGHT					DEPLANED CARGO & FREIGHT				
	1987	2007	2008	% Change 87-2008	% Change 2007-2008	1987	2007	2008	% Change 87-2008	% Change 2007-2008
January	0	283,934	158,619	N/A	-44.14%	0	448,441	360,700	N/A	-19.57%
February	0	283,892	153,865	N/A	-45.80%	0	445,594	294,741	N/A	-33.85%
March	0	335,696	201,341	N/A	-40.02%	0	532,497	298,884	N/A	-43.87%
April	0	270,953	169,401	N/A	-37.48%	0	476,437	357,939	N/A	-24.87%
May	0	280,286	159,640	N/A	-43.04%	0	507,390	380,323	N/A	-25.04%
June	0	312,803	246,821	N/A	-21.09%	0	483,297	445,463	N/A	-7.83%
July	0	261,917	239,609	N/A	-8.52%	0	443,037	467,483	N/A	5.52%
August	0	289,595	231,286	N/A	-20.13%	0	499,704	445,980	N/A	-10.75%
September	0	240,733	219,903	N/A	-8.65%	0	499,383	432,950	N/A	-13.30%
October	0	177,074	194,008	N/A	9.56%	0	399,428	476,602	N/A	19.32%
November	0	159,861	96,999	N/A	-39.32%	0	379,896	260,875	N/A	-31.33%
December	0	157,741				0	370,556			
Total thru November	0	2,736,883	2,071,492	N/A	-24.31%	0	4,735,208	4,221,940	N/A	-10.84%

AMERICAN EAGLE

	ENPLANED CARGO & FREIGHT					DEPLANED CARGO & FREIGHT				
	1987	2007	2008	% Change 87-2008	% Change 2007-2008	1987	2007	2008	% Change 87-2008	% Change 2007-2008
January	0	7	258	N/A	N/A	0	134	77	N/A	N/A
February	0	0	7	N/A	N/A	0	254	166	N/A	N/A
March	0	0	172	N/A	N/A	0	195	100	N/A	N/A
April	0	0	123	N/A	N/A	0	295	34	N/A	N/A
May	0	0	28	N/A	N/A	0	0	53	N/A	N/A
June	0	0	77	N/A	N/A	0	367	51	N/A	N/A
July	0	43	46	N/A	N/A	0	0	35	N/A	N/A
August	0	0	44	N/A	N/A	0	0	44	N/A	N/A
September	0	26	43	N/A	N/A	0	168	14	N/A	N/A
October	0	227	54	N/A	N/A	0	0	83	N/A	N/A
November	0	38	54	N/A	N/A	0	11	117	N/A	N/A
December	0	16				0	9			
Total thru November	0	341	906	N/A	N/A	0	1,424	774	N/A	N/A

NORTHWEST (MESABA)

	ENPLANED CARGO & FREIGHT					DEPLANED CARGO & FREIGHT				
	1987	2007	2008	% Change 87-2008	% Change 2007-2008	1987	2007	2008	% Change 87-2008	% Change 2007-2008
January	120	180	101	-15.83%	-43.89%	837	659	67	-92.00%	-89.83%
February	310	433	205	-33.87%	-52.66%	1,649	189	240	-85.45%	26.98%
March	256	284	267	4.30%	-5.99%	2,098	1,117	43	-97.95%	-96.15%
April	0	205	231	N/A	12.68%	0	1,580	89	N/A	-94.37%
May	0	119	198	N/A	66.39%	0	121	179	N/A	47.93%
June	0	391	87	N/A	-77.75%	0	133	102	N/A	-23.31%
July	0	5	129	N/A	2480.00%	0	42	140	N/A	233.33%
August	0	122	98	N/A	-19.67%	0	283	623	N/A	120.14%
September	0	363	409	N/A	12.67%	0	591	192	N/A	-67.51%
October	0	17	74	N/A	335.29%	0	201	162	N/A	-19.40%
November	0	136	276	N/A	102.94%	0	194	7	N/A	-96.39%
December	0	74				0	245			
Total thru November	686	2,255	2,075	202.48%	-7.98%	4,584	5,110	1,844	-59.77%	-63.91%

MIDWEST CONNECT

	ENPLANED CARGO & FREIGHT					DEPLANED CARGO & FREIGHT				
	1987	2007	2008	% Change 87-2008	% Change 2007-2008	1987	2007	2008	% Change 87-2008	% Change 2007-2008
January	0	0	0	N/A	N/A	0	15	500	N/A	3233.33%
February	0	0	0	N/A	N/A	0	530	846	N/A	59.62%
March	0	0	0	N/A	N/A	0	13	249	N/A	1815.38%
April	0	0	0	N/A	N/A	0	788	588	N/A	-25.38%
May	0	0	0	N/A	N/A	0	322	77	N/A	-76.09%
June	0	0	0	N/A	N/A	0	595	83	N/A	-86.05%
July	0	0	0	N/A	N/A	0	415	133	N/A	-67.95%
August	0	0	0	N/A	N/A	0	499	181	N/A	-63.73%
September	0	0	0	N/A	N/A	0	200	86	N/A	-57.00%
October	0	0	0	N/A	N/A	0	350	0	N/A	N/A
November	0	0	0	N/A	N/A	0	570	100	N/A	N/A
December	0	0				0	188			
Total thru November	0	0	0	N/A	N/A	0	4,297	2,843	N/A	-33.84%

EAGLE AIR CARGO

	ENPLANED CARGO & FREIGHT					DEPLANED CARGO & FREIGHT				
	1987	2007	2008	% Change 87-2008	% Change 2007-2008	1987	2007	2008	% Change 87-2008	% Change 2007-2008
January	0	0	19977	N/A	N/A	0	0	8,298	N/A	N/A
February	0	0	25942	N/A	N/A	0	0	10,234	N/A	N/A
March	0	0	24500	N/A	N/A	0	0	6,612	N/A	N/A
April	0	0	29470	N/A	N/A	0	0	8,328	N/A	N/A
May	0	0	39216	N/A	N/A	0	0	9,346	N/A	N/A
June	0	0	0	N/A	N/A	0	0	0	N/A	N/A
July	0	0	0	N/A	N/A	0	0	0	N/A	N/A
August	0	0	0	N/A	N/A	0	0	0	N/A	N/A
September	0	6765	0	N/A	N/A	0	2,816	0	N/A	N/A
October	0	27136	0	N/A	N/A	0	10,334	0	N/A	N/A
November	0	24204	0	N/A	N/A	0	8,287	0	N/A	N/A
December	0	31666				0	12,673			
Total thru November	0	58,105	139,105	N/A	N/A	0	21,437	42,818	N/A	N/A

CSA Air, Inc.

	ENPLANED CARGO & FREIGHT					DEPLANED CARGO & FREIGHT				
	1987	2007	2008	% Change 87-2008	% Change 2007-2008	1987	2007	2008	% Change 87-2008	% Change 2007-2008
January	0	34,549	51,260	N/A	48.37%	0	12,773	16,894	N/A	32.26%
February	0	34,424	51,917	N/A	50.82%	0	15,123	18,002	N/A	19.04%
March	0	35,784	54,073	N/A	51.11%	0	14,400	18,228	N/A	26.58%
April	0	35,737	53,504	N/A	49.72%	0	14,485	17,996	N/A	24.24%
May	0	41,818	58,385	N/A	39.62%	0	16,239	17,505	N/A	7.80%
June	0	67,001	62,080	N/A	-7.34%	0	24,699	23,976	N/A	-2.93%
July	0	59,178	60,580	N/A	2.37%	0	18,597	24,285	N/A	30.59%
August	0	66,681	58,839	N/A	-11.76%	0	24,942	21,734	N/A	-12.86%
September	0	53,291	55,259	N/A	3.69%	0	19,300	25,059	N/A	29.84%
October	0	55,917	66,720	N/A	19.32%	0	20,227	34,056	N/A	68.37%
November	0	52,952	51,247	N/A	-3.22%	0	20,775	18,807	N/A	-9.47%
December	0	64,038				0	16,306			
Total thru November	0	537,332	623,864	N/A	16.10%	0	201,560	236,542	N/A	17.36%

AIRTRAN

	ENPLANED CARGO & FREIGHT			% Change	% Change	DEPLANED CARGO & FREIGHT			% Change	% Change
	1987	2007	2008	87-2008	2007-2008	1987	2007	2008	87-2008	2007-2008
January	0	0	0	N/A	N/A	0	0	0	N/A	N/A
February	0	0	0	N/A	N/A	0	0	0	N/A	N/A
March	0	0	0	N/A	N/A	0	0	0	N/A	N/A
April	0	0	0	N/A	N/A	0	0	0	N/A	N/A
May	0	0	0	N/A	N/A	0	0	0	N/A	N/A
June	0	0	0	N/A	N/A	0	0	0	N/A	N/A
July	0	0	0	N/A	N/A	0	0	0	N/A	N/A
August	0	0	0	N/A	N/A	0	0	0	N/A	N/A
September	0	0	0	N/A	N/A	0	0	0	N/A	N/A
October	0	0	0	N/A	N/A	0	0	0	N/A	N/A
November	0	0	0	N/A	N/A	0	0	0	N/A	N/A
December	0	0				0	0			
Total thru November	0	0	0	N/A	N/A	0	0	0	N/A	N/A

PRIOR CARRIERS

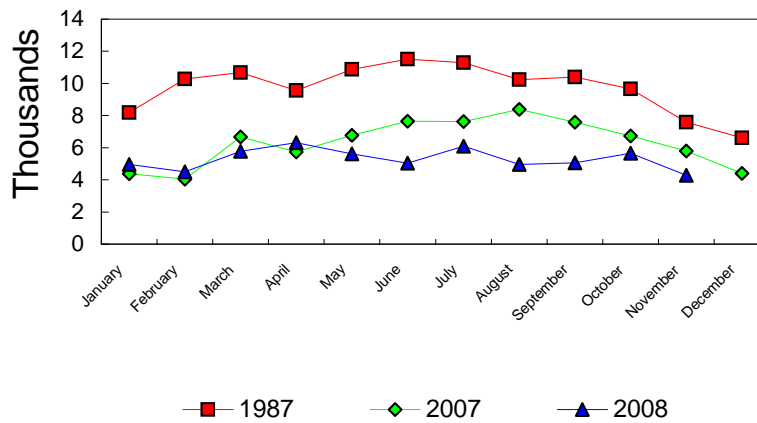
	ENPLANED CARGO & FREIGHT			% Change	% Change	DEPLANED CARGO & FREIGHT			% Change	% Change
	1987	2007	2008	87-2008	2007-2008	1987	2007	2008	87-2008	2007-2008
January	3,540	0	0	N/A	N/A	15,720	0	0	N/A	N/A
February	3,272	0	0	N/A	N/A	28,748	0	0	N/A	N/A
March	4,012	0	0	N/A	N/A	20,915	0	0	N/A	N/A
April	3,747	0	0	N/A	N/A	30,094	0	0	N/A	N/A
May	3,219	0	0	N/A	N/A	28,459	0	0	N/A	N/A
June	9,901	0	195	-98.03%	N/A	27,135	0	0	N/A	N/A
July	5,316	300	0	N/A	N/A	21,325	4,319	0	N/A	N/A
August	6,299	0	157	-97.51%	N/A	19,064	0	0	N/A	N/A
September	6,509	0	130	-98.00%	N/A	23,494	0	0	N/A	N/A
October	7,148	0	238	-96.67%	N/A	26,707	0	0	N/A	N/A
November	10,254	0	59	-0.99424615	N/A	22,817	0	0	N/A	N/A
December	3,905	0				19,423	0			
Total thru November	63,217	300	779	N/A	N/A	264,478	4,319	0	N/A	N/A

OPERATIONS STATISTICAL COMPARISON

FOR YEARS 1987, 2007 & 2008

	1987 OPERATIONS	2007 OPERATIONS	2008 OPERATIONS	CHANGE 1987/2008	CHANGE 2007/2008
January	8,177	4,383	4,961	-39.33%	13.19%
February	10,270	4,050	4,491	-56.27%	10.89%
March	10,677	6,672	5,784	-45.83%	-13.31%
April	9,562	5,732	6,307	-34.04%	10.03%
May	10,870	6,763	5,611	-48.38%	-17.03%
June	11,514	7,642	5,033	-56.29%	-34.14%
July	11,296	7,618	6,096	-46.03%	-19.98%
August	10,240	8,382	4,965	-51.51%	-40.77%
September	10,389	7,591	5,050	-51.39%	-33.47%
October	9,656	6,734	5,651	-41.48%	-16.08%
November	7,592	5,804	4,273	-43.72%	-26.38%
December	6,608	4,399			
Total Through November	110,243	71,371	58,222	-47.19%	-18.42%
ANNUAL TOTAL	116,851	75,770	58,222		

OPERATIONS Pre-Authority vs 2007 & 2008



**BISHOP INTERNATIONAL AIRPORT
AIR TRAFFIC RECORD 2008**

MONTH	ITINERANT AIRCRAFT				LOCAL AIRCRAFT			TOTAL OPERATIONS	CUMULATIVE OPERATIONS	
	AIR CARRIER	AIR TAXI	GENERAL AVIATION	MILITARY	TOTAL ITINERANT	CIVILIAN	MILITARY			TOTAL LOCAL
JANUARY	1,099	1,209	1,017	8	3,333	1,628		1,628	4,961	4,961
FEBRUARY	986	1,152	1,049	16	3,203	1,288		1,288	4,491	9,452
MARCH	1,099	1,235	1,450	22	3,806	1,978		1,978	5,784	15,236
APRIL	977	1,287	1,652	17	3,933	2,374		2,374	6,307	21,543
MAY	865	1,303	1,637	20	3,825	1,786		1,786	5,611	27,154
JUNE	895	1,310	1,402	26	3,633	1,394	6	1,400	5,033	32,187
JULY	818	1,230	1,855	14	3,917	2,179		2,179	6,096	38,283
AUGUST	780	1,159	1,613	24	3,576	1,389		1,389	4,965	43,248
SEPTEMBER	779	972	2,013	23	3,787	1,242	21	1,263	5,050	48,298
OCTOBER	968	870	1,469	29	3,336	2,313	2	2,315	5,651	53,949
NOVEMBER	1,010	789	1,110	8	2,917	1,356		1,356	4,273	58,222
DECEMBER					0			0	0	0
TOTALS	10,276	12,516	16,267	207	39,266	18,927	29	18,956	58,222	