

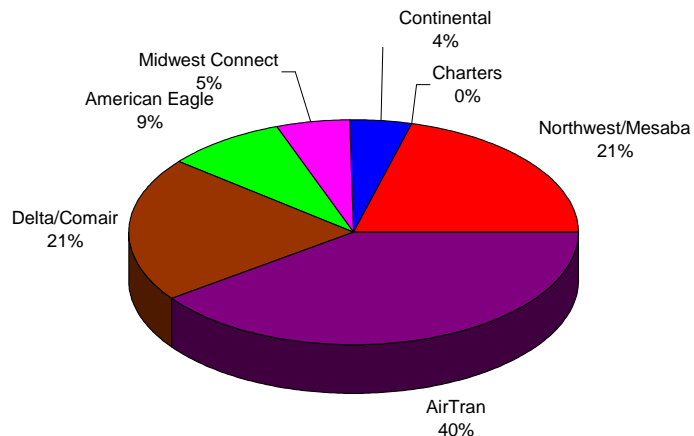
**BISHOP INTERNATIONAL AIRPORT AUTHORITY
AIRLINE PASSENGER COMPARISON
CALENDAR YEARS 2008 AND 2009**

ENPLANEMENTS	NORTHWEST/MESABA			AIRTRAN			DELTA/COMAIR/ASA			AMERICAN EAGLE		
	2008	2009	% Change	2008	2009	% Change	2008	2009	% Change	2008	2009	% Change
January	12,291	8,023	-34.72%	19,049	17,933	-5.86%	6,850	6,764	-1.26%	5,916	3,364	-43.14%
February	11,684	7,456	-36.19%	23,711	18,386	-22.46%	5,909	7,379	24.88%	4,989	3,283	-34.20%
March	16,416	9,003	-45.16%	23,928	19,419	-18.84%	6,878	8,861	28.83%	5,691	3,462	-39.17%
April	12,221	7,254	-40.64%	18,054	16,913	-6.32%	5,984	8,470	41.54%	5,068	3,581	-29.34%
May	11,505	7,707	-33.01%	15,312	12,933	-15.54%	5,811	7,764	33.61%	5,066	3,648	-27.99%
June	11,542	8,316	-27.95%	15,362	14,002	-8.85%	6,677	9,475	41.91%	5,416	3,752	-30.72%
July	11,752	10,885	-7.38%	16,037	15,923	-0.71%	7,073	10,112	42.97%	6,053	3,978	-34.28%
August	10,856	9,893	-8.87%	16,205	16,231	0.16%	6,833	9,870	44.45%	4,612	3,631	-21.27%
September	8,821	8,689	-1.50%	11,372	12,804	12.59%	7,118	8,157	14.60%	3,147	3,247	3.18%
October	8,461	8,565	1.23%	16,529	16,129	-2.42%	7,939	9,570	20.54%	3,422	3,710	8.42%
November	8,421	8,041	-4.51%	16,752	17,397	3.85%	7,154	7,834	9.51%	3,121	3,517	12.69%
December	10,045	8,444	-15.94%	16,772	18,776	11.95%	7,564	7,435	-1.71%	3,057	3,032	-0.82%
Through December	134,015	102,276	-23.68%	209,083	196,846	-5.85%	81,790	101,691	24.33%	55,558	42,205	-24.03%

ENPLANEMENTS	MIDWEST CONNECT			CONTINENTAL			CHARTERS		
	2008	2009	% Change	2008	2009	% Change	2008	2009	% Change
January	1,640	1,527	-6.89%	1,340	1,227	-8.43%	159	151	-5.03%
February	1,642	1,692	3.05%	1,497	1,630	8.88%	0	0	N/A
March	2,565	1,852	-27.80%	1,751	1,944	11.02%	0	0	N/A
April	2,794	2,115	-24.30%	1,780	1,848	3.82%	159	159	0.00%
May	2,895	2,281	-21.21%	1,853	1,526	-17.65%	0	0	N/A
June	3,137	2,499	-20.34%	1,675	1,753	4.66%	0	0	N/A
July	2,948	2,533	-14.08%	1,717	2,088	21.61%	0	0	N/A
August	2,646	2,652	0.23%	1,922	2,084	8.43%	0	0	N/A
September	1,990	2,308	15.98%	1,438	1,618	12.52%	0	161	N/A
October	1,810	2,231	23.26%	1,401	1,584	13.06%	157	0	N/A
November	1,626	2,571	58.12%	1,158	1,713	47.93%	0	0	N/A
December	2,088	2,311	10.68%	1,575	2,024	28.51%	0	0	N/A
Through December	27,781	26,572	-4.35%	19,107	21,039	10.11%	475	471	N/A

Latest Stats.**	<u>Oct.</u>	<u>Jan-Oct 2009</u>
National avg.	-1.27%	-6.17%
Bishop Airport	5.21%	-9.02%

**ENPLANEMENT SHARE BY AIRLINE
Calendar Year 2009**



** RITA Bureau of Transportation Statistics

	TOTAL		
	2008	2009	% Change
January	47,245	38,989	-17.47%
February	49,432	39,826	-19.43%
March	57,229	44,541	-22.17%
April	46,060	40,340	-12.42%
May	42,442	35,859	-15.51%
June	43,809	39,797	-9.16%
July	45,580	45,519	-0.13%
August	43,074	44,361	2.99%
September	33,886	36,984	9.14%
October	39,719	41,789	5.21%
November	38,232	41,073	7.43%
December	41,101	42,022	2.24%
Through December	527,809	491,100	-6.95%
Total Year	527,809	491,100	

■ Northwest/Mesaba
 ■ AirTran
 ■ Delta/Comair
■ American Eagle
 ■ Midwest Connect
 ■ Continental
■ Charters

**BISHOP INTERNATIONAL AIRPORT AUTHORITY
AIRLINE LOAD FACTOR ANALYSIS**

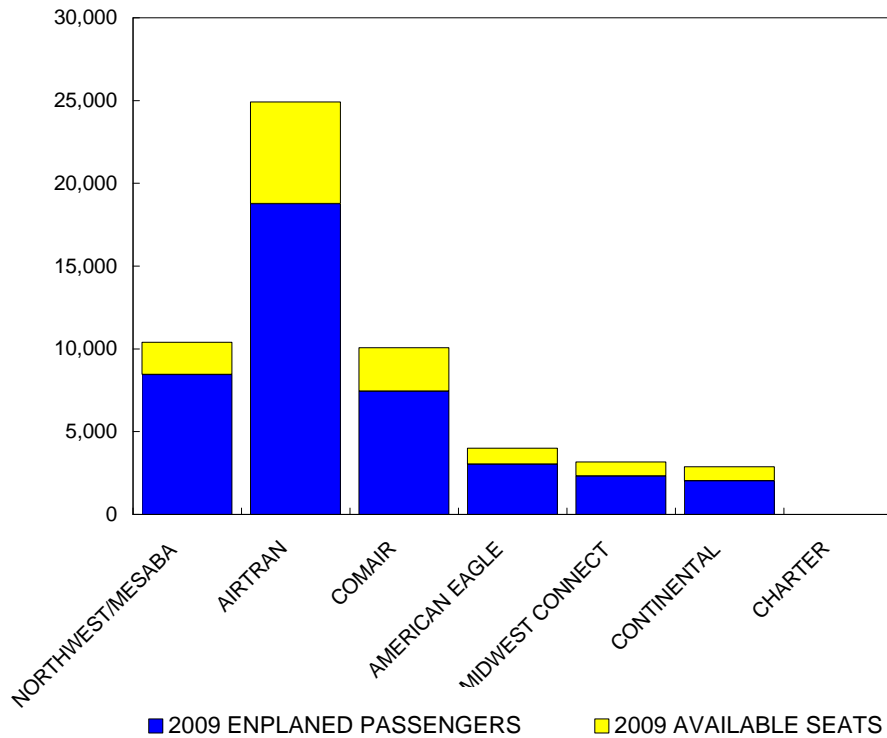
12/1/2009

2008

2009

AIRLINE	AVAILABLE SEATS	ENPLANED PAX	LOAD FACTOR	AVAILABLE SEATS	ENPLANED PAX	LOAD FACTOR
NORTHWEST/MESABA	16,086	10,045	62.45%	10,400	8,444	81.19%
AIRTRAN	20,672	16,772	81.13%	24,911	18,776	75.37%
COMAIR	9,780	7,564	77.34%	10,080	7,435	73.76%
AMERICAN EAGLE	3,322	3,057	92.02%	4,006	3,032	75.69%
MIDWEST CONNECT	3,850	2,088	54.23%	3,179	2,311	72.70%
CONTINENTAL	2,590	1,575	60.81%	2,886	2,024	70.13%
CHARTER	0	0	N/A	0	0	N/A
ALL AIRLINES	56,300	41,101	73.00%	55,462	42,022	75.77%

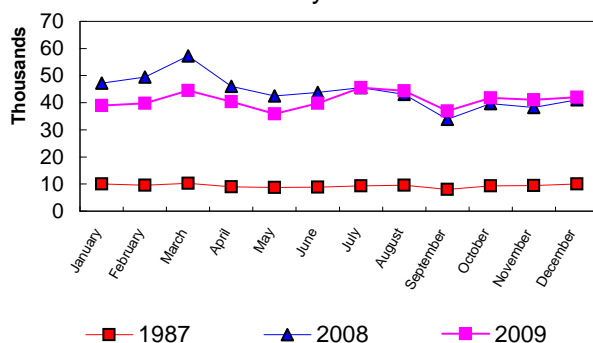
**Enplanements vs Available Seats
Current Month**



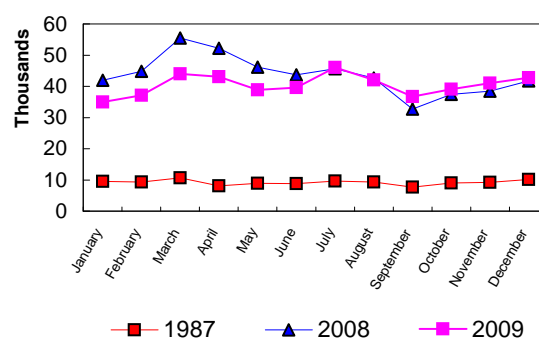
**BISHOP INTERNATIONAL AIRPORT
PASSENGER STATISTICAL COMPARISON
FOR THE YEARS 1987, 2008, 2009**

	ENPLANED PASSENGERS			% CHANGE	% CHANGE
	1987	2008	2009	1987/2009	2008/2009
January	10,008	47,245	38,989	289.58%	-17.47%
February	9,544	49,432	39,826	317.29%	-19.43%
March	10,287	57,229	44,541	332.98%	-22.17%
April	8,967	46,060	40,340	349.87%	-12.42%
May	8,685	42,442	35,859	312.88%	-15.51%
June	8,891	43,809	39,797	347.61%	-9.16%
July	9,372	45,580	45,519	385.69%	-0.13%
August	9,586	43,074	44,361	362.77%	2.99%
September	8,038	33,886	36,984	360.11%	9.14%
October	9,350	39,719	41,789	346.94%	5.21%
November	9,402	38,232	41,073	336.85%	7.43%
December	10,010	41,101	42,022	319.80%	2.24%
Total thru December	112,140	527,809	491,100	337.93%	-6.95%
Total for Year	112,140	527,809	491,100		

ENPLANEMENT COMPARISON
Pre-Authority vs 2008 & 2009



DEPLANEMENT COMPARISON
Pre-Authority vs 2008 & 2009



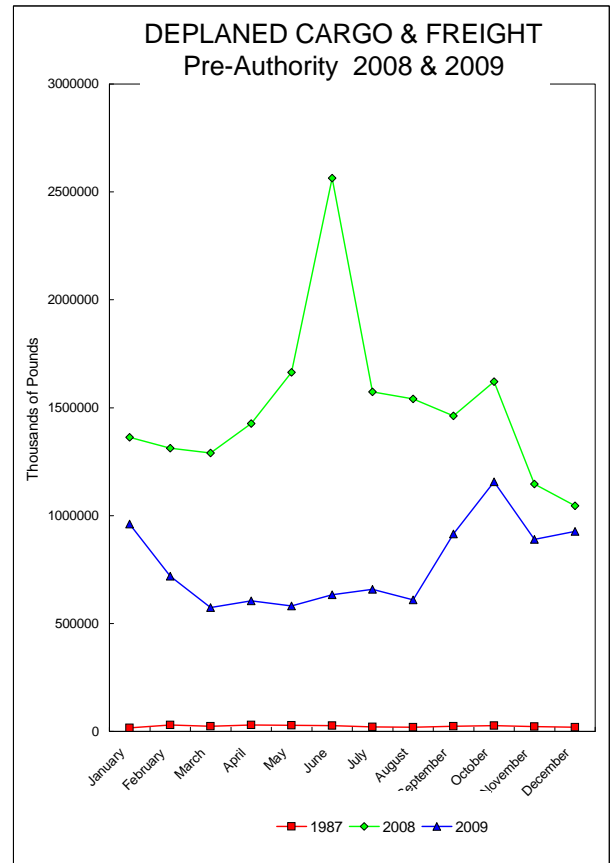
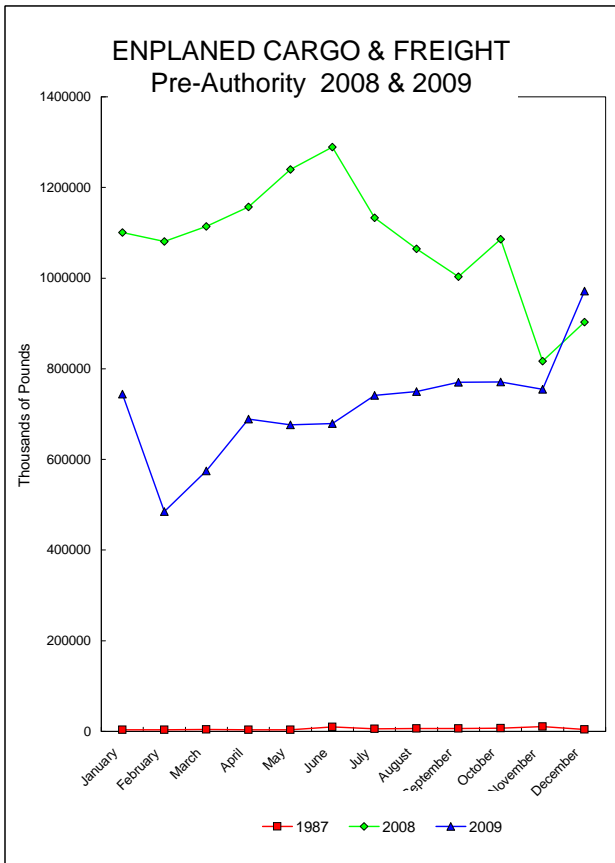
	DEPLANED PASSENGERS			% CHANGE	% CHANGE
	1987	2008	2009	1987/2009	2008/2009
January	9,542	41,948	35,013	266.94%	-16.53%
February	9,380	44,852	37,122	295.76%	-17.23%
March	10,646	55,515	43,994	313.24%	-20.75%
April	8,139	52,171	43,119	429.78%	-17.35%
May	8,969	46,110	38,854	333.20%	-15.74%
June	8,795	43,716	39,569	349.90%	-9.49%
July	9,592	45,689	46,075	380.35%	0.84%
August	9,331	42,693	42,012	350.24%	-1.60%
September	7,740	32,667	36,714	374.34%	12.39%
October	9,005	37,478	39,097	334.17%	4.32%
November	9,235	38,462	41,005	344.02%	6.61%
December	10,114	41,703	42,724	322.42%	2.45%
Total thru December	110,488	523,004	485,298	339.23%	-7.21%
Total for Year	110,488	523,004	485,298		

Total all current month	222,628	1,050,813	976,398
Total all for the year	222,628	1,050,813	976,398

BISHOP INTERNATIONAL AIRPORT AIR CARGO AND FREIGHT COMPARISON Pre-Authority(1987) 2008 & 2009

TOTAL AIR CARGO AND FREIGHT

	ENPLANED CARGO & FREIGHT			% Change	% Change	DEPLANED CARGO & FREIGHT			% Change	% Change
	1987	2008	2009	87-2009	2008-2009	1987	2008	2009	87-2009	2008-2009
January	3,660	1,100,987	743,851	20223.80%	-32.44%	16,557	1,362,603	961,215	5705.49%	-29.46%
February	3,582	1,080,738	484,989	13439.61%	-55.12%	30,397	1,312,330	719,359	2266.55%	-45.18%
March	4,268	1,114,173	574,692	13365.14%	-48.42%	23,013	1,290,406	574,292	2395.51%	-55.50%
April	3,747	1,157,137	688,774	18282.01%	-40.48%	30,094	1,426,201	604,458	1908.57%	-57.62%
May	3,219	1,239,693	676,504	20915.97%	-45.43%	28,459	1,663,538	580,679	1940.41%	-65.09%
June	9,901	1,289,325	679,073	6758.63%	-47.33%	27,135	2,564,605	633,754	2235.56%	-75.29%
July	5,316	1,133,001	741,605	13850.43%	-34.55%	21,325	1,573,163	658,224	2986.63%	-58.16%
August	6,299	1,064,939	749,498	11798.68%	-29.62%	19,064	1,540,210	608,992	3094.46%	-60.46%
September	6,509	1,003,008	769,951	11729.02%	-23.24%	23,494	1,462,871	914,658	3793.16%	-37.48%
October	7,148	1,085,746	771,062	10687.10%	-28.98%	26,707	1,620,352	1,157,152	4232.77%	-28.59%
November	10,254	816,594	754,719	7260.24%	-7.58%	22,817	1,146,640	889,027	3796.34%	-22.47%
December	3,905	903,172	971,301	24773.27%	7.54%	19,423	1,045,282	926,354	4669.37%	-11.38%
Total thru December	67,808	12,987,615	8,606,019	12591.75%	-33.74%	288,485	18,008,201	9,228,164	3098.84%	-48.76%
Annual Total	67,808	12,988,513	8,606,019			288,485	18,008,201	9,228,164		



FEDEX

	ENPLANED CARGO & FREIGHT					DEPLANED CARGO & FREIGHT				
	1987	2008	2009	% Change 87-2009	% Change 2008-2009	1987	2008	2009	% Change 87-2009	% Change 2008-2009
January	0	870,732	715,678	N/A	-17.81%	0	976,067	939,152	N/A	-3.78%
February	0	839,826	458,660	N/A	-45.39%	0	986,041	585,302	N/A	-40.64%
March	0	832,812	545,702	N/A	-34.47%	0	966,259	559,596	N/A	-42.09%
April	0	902,615	662,738	N/A	-26.58%	0	1,041,227	588,658	N/A	-43.46%
May	0	887,145	646,092	N/A	-27.17%	0	1,025,009	562,225	N/A	-45.15%
June	0	850,739	648,497	N/A	-23.77%	0	1,020,445	612,993	N/A	-39.93%
July	0	832,637	704,960	N/A	-15.33%	0	1,081,087	634,876	N/A	-41.27%
August	0	774,265	714,030	N/A	-7.78%	0	1,065,428	582,020	N/A	-45.37%
September	0	715,516	733,322	N/A	2.49%	0	994,570	679,842	N/A	-31.64%
October	0	824,642	739,096	N/A	-10.37%	0	1,109,449	741,488	N/A	-33.17%
November	0	667,959	726,534	N/A	8.77%	0	866,734	824,805	N/A	-4.84%
December	0	841,807	937,824	N/A	11.41%	0	1,029,399	895,436	N/A	-13.01%
Total thru December	0	9,840,695	8,233,133	N/A	-16.34%	0	12,161,715	8,206,393	N/A	-32.52%

GVA

	ENPLANED CARGO & FREIGHT					DEPLANED CARGO & FREIGHT				
	1987	2008	2009	% Change 87-2009	% Change 2008-2009	1987	2008	2009	% Change 87-2009	% Change 2008-2009
January	0	40	0	N/A	N/A	0	0	0	N/A	N/A
February	0	8,976	0	N/A	N/A	0	2,060	0	N/A	N/A
March	0	1,008	0	N/A	N/A	0	31	0	N/A	N/A
April	0	1,793	0	N/A	N/A	0	0	0	N/A	N/A
May	0	95,081	0	N/A	N/A	0	231,046	0	N/A	N/A
June	0	129,326	0	N/A	N/A	0	1,074,485	0	N/A	N/A
July	0	0	0	N/A	N/A	0	0	0	N/A	N/A
August	0	250	2,684	N/A	N/A	0	6,220	2,392	N/A	N/A
September	0	11,748	4,151	N/A	N/A	0	10,000	217,311	N/A	N/A
October	0	10	0	N/A	N/A	0	0	392,674	N/A	N/A
November	0	0	0	N/A	N/A	0	0	45,665	N/A	N/A
December	0	3,910	234	N/A	N/A	0	0	12,221	N/A	N/A
Total thru December	0	252,142	7,069	N/A	-97.20%	0	1,323,842	670,263	N/A	-49.37%

AIRBORNE

	ENPLANED CARGO & FREIGHT					DEPLANED CARGO & FREIGHT				
	1987	2008	2009	% Change 87-2009	% Change 2008-2009	1987	2008	2009	% Change 87-2009	% Change 2008-2009
January	0	158,619	0	N/A	N/A	0	360,700	0	N/A	N/A
February	0	153,865	0	N/A	N/A	0	294,741	0	N/A	N/A
March	0	201,341	0	N/A	N/A	0	298,884	0	N/A	N/A
April	0	169,401	0	N/A	N/A	0	357,939	0	N/A	N/A
May	0	159,640	0	N/A	N/A	0	380,323	0	N/A	N/A
June	0	246,821	0	N/A	N/A	0	445,463	0	N/A	N/A
July	0	239,609	0	N/A	N/A	0	467,483	0	N/A	N/A
August	0	231,286	0	N/A	N/A	0	445,980	0	N/A	N/A
September	0	219,903	0	N/A	N/A	0	432,950	0	N/A	N/A
October	0	194,008	0	N/A	N/A	0	476,602	0	N/A	N/A
November	0	96,999	0	N/A	N/A	0	260,875	0	N/A	N/A
December	0	0	0	N/A	N/A	0	0	0	N/A	N/A
Total thru December	0	2,071,492	0	N/A	-100.00%	0	4,221,940	0	N/A	-100.00%

AMERICAN EAGLE

	ENPLANED CARGO & FREIGHT					DEPLANED CARGO & FREIGHT				
	1987	2008	2009	% Change 87-2009	% Change 2008-2009	1987	2008	2009	% Change 87-2009	% Change 2008-2009
January	0	258	63	N/A	-75.58%	0	77	33	N/A	-57.14%
February	0	7	60	N/A	757.14%	0	166	68	N/A	-59.04%
March	0	172	51	N/A	-70.35%	0	100	12	N/A	-88.00%
April	0	123	53	N/A	-56.91%	0	34	46	N/A	35.29%
May	0	28	59	N/A	110.71%	0	53	14	N/A	-73.58%
June	0	77	63	N/A	-18.18%	0	51	5	N/A	-90.20%
July	0	46	57	N/A	23.91%	0	35	9	N/A	-74.29%
August	0	44	62	N/A	40.91%	0	44	6	N/A	-86.36%
September	0	43	63	N/A	46.51%	0	14	2	N/A	-85.71%
October	0	54	69	N/A	27.78%	0	83	14	N/A	-83.13%
November	0	54	66	N/A	22.22%	0	117	6	N/A	-94.87%
December	0	45	70	N/A	55.56%	0	2	36	N/A	1700.00%
Total thru December	0	951	736	N/A	N/A	0	776	251	N/A	N/A

NORTHWEST (MESABA)

	ENPLANED CARGO & FREIGHT					DEPLANED CARGO & FREIGHT				
	1987	2008	2009	% Change 87-2009	% Change 2008-2009	1987	2008	2009	% Change 87-2009	% Change 2008-2009
January	120	101	50	-58.33%	-50.50%	837	67	0	-100.00%	N/A
February	310	205	155	-50.00%	-24.39%	1,649	240	0	N/A	N/A
March	256	267	42	-83.59%	-84.27%	2,098	43	9	-99.57%	-79.07%
April	0	231	29	N/A	-87.45%	0	89	26	N/A	-70.79%
May	0	198	4	N/A	-97.98%	0	179	95	N/A	-46.93%
June	0	87	0	N/A	N/A	0	102	0	N/A	N/A
July	0	129	0	N/A	N/A	0	140	0	N/A	N/A
August	0	98	57	N/A	-41.84%	0	623	650	N/A	4.33%
September	0	409	0	N/A	N/A	0	192	204	N/A	N/A
October	0	74	28	N/A	-62.16%	0	162	707	N/A	336.42%
November	0	276	56	N/A	-79.71%	0	7	677	N/A	9571.43%
December	0	133	344	N/A	158.65%	0	12	130	N/A	983.33%
Total thru December	686	2,208	765	11.52%	-65.35%	4,584	1,856	2,498	-45.51%	34.59%

MIDWEST CONNECT

	ENPLANED CARGO & FREIGHT					DEPLANED CARGO & FREIGHT				
	1987	2008	2009	% Change 87-2009	% Change 2008-2009	1987	2008	2009	% Change 87-2009	% Change 2008-2009
January	0	0	0	N/A	N/A	0	500	0	N/A	N/A
February	0	0	0	N/A	N/A	0	846	23	N/A	-97.28%
March	0	0	0	N/A	N/A	0	249	0	N/A	N/A
April	0	0	0	N/A	N/A	0	588	188	N/A	-68.03%
May	0	0	0	N/A	N/A	0	77	20	N/A	-74.03%
June	0	0	0	N/A	N/A	0	83	40	N/A	-51.81%
July	0	0	0	N/A	N/A	0	133	12	N/A	-90.98%
August	0	0	0	N/A	N/A	0	181	0	N/A	N/A
September	0	0	0	N/A	N/A	0	86	26	N/A	-69.77%
October	0	0	0	N/A	N/A	0	0	56	N/A	N/A
November	0	0	0	N/A	N/A	0	100	38	N/A	-62.00%
December	0	0	0	N/A	N/A	0	0	19	N/A	N/A
Total thru December	0	0	0	N/A	N/A	0	2,843	422	N/A	-85.16%

EAGLE AIR CARGO

	ENPLANED CARGO & FREIGHT					DEPLANED CARGO & FREIGHT				
	1987	2008	2009	% Change 87-2009	% Change 2008-2009	1987	2008	2009	% Change 87-2009	% Change 2008-2009
January	0	19977	0	N/A	N/A	0	8,298	0	N/A	N/A
February	0	25942	0	N/A	N/A	0	10,234	0	N/A	N/A
March	0	24500	0	N/A	N/A	0	6,612	0	N/A	N/A
April	0	29470	0	N/A	N/A	0	8,328	0	N/A	N/A
May	0	39216	0	N/A	N/A	0	9,346	0	N/A	N/A
June	0	0	0	N/A	N/A	0	0	0	N/A	N/A
July	0	0	0	N/A	N/A	0	0	0	N/A	N/A
August	0	0	0	N/A	N/A	0	0	0	N/A	N/A
September	0	0	0	N/A	N/A	0	0	0	N/A	N/A
October	0	0	0	N/A	N/A	0	0	0	N/A	N/A
November	0	0	0	N/A	N/A	0	0	0	N/A	N/A
December	0	0	0	N/A	N/A	0	0	0	N/A	N/A
Total thru December	0	139,105	0	N/A	N/A	0	42,818	0	N/A	N/A

CSA Air, Inc.

	ENPLANED CARGO & FREIGHT					DEPLANED CARGO & FREIGHT				
	1987	2008	2009	% Change 87-2009	% Change 2008-2009	1987	2008	2009	% Change 87-2009	% Change 2008-2009
January	0	51,260	27,956	N/A	N/A	0	16,894	22,030	N/A	N/A
February	0	51,917	26,074	N/A	-49.78%	0	18,002	133,966	N/A	644.17%
March	0	54,073	28,865	N/A	-46.62%	0	18,228	14,675	N/A	-19.49%
April	0	53,504	25,909	N/A	-51.58%	0	17,996	15,534	N/A	-13.68%
May	0	58,385	30,290	N/A	-48.12%	0	17,505	18,311	N/A	4.60%
June	0	62,080	30,513	N/A	-50.85%	0	23,976	20,698	N/A	-13.67%
July	0	60,580	36,559	N/A	-39.65%	0	24,285	23,317	N/A	-3.99%
August	0	58,839	32,638	N/A	-44.53%	0	21,734	23,924	N/A	10.08%
September	0	55,259	32,409	N/A	-41.35%	0	25,059	17,273	N/A	-31.07%
October	0	66,720	31,869	N/A	-52.23%	0	34,056	22,205	N/A	-34.80%
November	0	51,247	27,813	N/A	-45.73%	0	18,807	17,836	N/A	-5.16%
December	0	57,158	32,829	N/A	-42.56%	0	15,869	18,511	N/A	16.65%
Total thru December	0	681,022	363,724	N/A	-46.59%	0	252,411	348,280	N/A	37.98%

AIRTRAN

	ENPLANED CARGO & FREIGHT					DEPLANED CARGO & FREIGHT				
	1987	2008	2009	% Change 87-2009	% Change 2008-2009	1987	2008	2009	% Change 87-2009	% Change 2008-2009
January	0	0	0	N/A	N/A	0	0	0	N/A	N/A
February	0	0	0	N/A	N/A	0	0	0	N/A	N/A
March	0	0	0	N/A	N/A	0	0	0	N/A	N/A
April	0	0	0	N/A	N/A	0	0	0	N/A	N/A
May	0	0	0	N/A	N/A	0	0	0	N/A	N/A
June	0	0	0	N/A	N/A	0	0	0	N/A	N/A
July	0	0	0	N/A	N/A	0	0	0	N/A	N/A
August	0	0	0	N/A	N/A	0	0	0	N/A	N/A
September	0	0	0	N/A	N/A	0	0	0	N/A	N/A
October	0	0	0	N/A	N/A	0	0	0	N/A	N/A
November	0	0	0	N/A	N/A	0	0	0	N/A	N/A
December	0	0	0	N/A	N/A	0	0	0	N/A	N/A
Total thru December	0	0	0	N/A	N/A	0	0	0	N/A	N/A

PRIOR CARRIERS

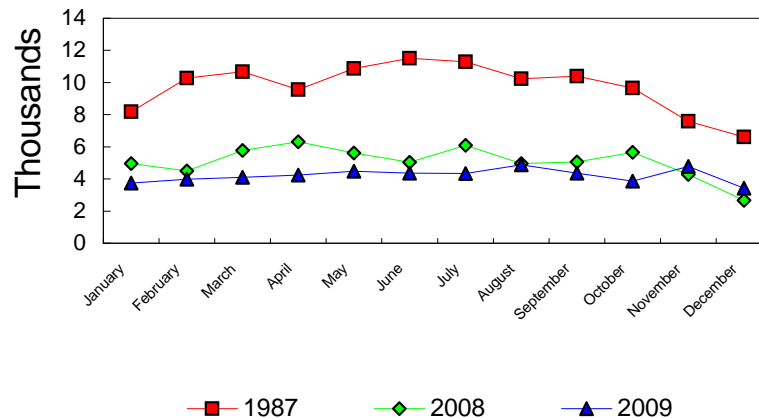
	ENPLANED CARGO & FREIGHT					DEPLANED CARGO & FREIGHT				
	1987	2008	2009	% Change 87-2009	% Change 2008-2009	1987	2008	2009	% Change 87-2009	% Change 2008-2009
January	3,540	0	104	-97.06%	N/A	15,720	0	0	N/A	N/A
February	3,272	0	40	-98.78%	N/A	28,748	0	0	N/A	N/A
March	4,012	0	32	-99.20%	N/A	20,915	0	0	N/A	N/A
April	3,747	0	45	-98.80%	N/A	30,094	0	6	-99.98%	N/A
May	3,219	0	59	-98.17%	N/A	28,459	0	14	-99.95%	N/A
June	9,901	195	0	-100.00%	N/A	27,135	0	18	-99.93%	N/A
July	5,316	0	29	-99.45%	N/A	21,325	0	10	-99.95%	N/A
August	6,299	157	27	-99.57%	-82.80%	19,064	0	0	N/A	N/A
September	6,509	130	6	-99.91%	-95.38%	23,494	0	0	N/A	N/A
October	7,148	238	0	N/A	N/A	26,707	0	8	N/A	N/A
November	10,254	59	250	-97.56%	323.73%	22,817	0	0	N/A	N/A
December	3,905	119	0	N/A	N/A	19,423	0	1	-99.99%	N/A
Total thru December	67,122	898	592	N/A	N/A	283,901	0	57	N/A	N/A

OPERATIONS STATISTICAL COMPARISON

FOR YEARS 1987, 2008 & 2009

	1987 OPERATIONS	2008 OPERATIONS	2009 OPERATIONS	CHANGE 1987/2009	CHANGE 2008/2009
January	8,177	4,961	3,739	-54.27%	-24.63%
February	10,270	4,491	3,981	-61.24%	-11.36%
March	10,677	5,784	4,095	-61.65%	-29.20%
April	9,562	6,307	4,248	-55.57%	-32.65%
May	10,870	5,611	4,480	-58.79%	-20.16%
June	11,514	5,033	4,355	-62.18%	-13.47%
July	11,296	6,096	4,348	-61.51%	-28.67%
August	10,240	4,965	4,881	-52.33%	-1.69%
September	10,389	5,050	4,366	-57.97%	-13.54%
October	9,656	5,651	3,867	-59.95%	-31.57%
November	7,592	4,273	4,770	-37.17%	11.63%
December	6,608	2,660	3,429	-48.11%	28.91%
Total Through December	116,851	60,882	50,559	-56.73%	-16.96%
ANNUAL TOTAL	116,851	60,882	50,559		

OPERATIONS Pre-Authority vs 2008 & 2009



**BISHOP INTERNATIONAL AIRPORT
AIR TRAFFIC RECORD 2009**

MONTH	ITINERANT AIRCRAFT				LOCAL AIRCRAFT			TOTAL OPERATIONS	CUMULATIVE OPERATIONS	
	AIR CARRIER	AIR TAXI	GENERAL AVIATION	MILITARY	TOTAL ITINERANT	CIVILIAN	MILITARY			TOTAL LOCAL
JANUARY	821	931	827	6	2,585	1,154		1,154	3,739	3,739
FEBRUARY	759	767	866	13	2,405	1,576		1,576	3,981	7,720
MARCH	927	754	1,237	5	2,923	1,172		1,172	4,095	11,815
APRIL	887	828	1,096	19	2,830	1,418		1,418	4,248	16,063
MAY	848	730	1,566	26	3,170	1,308	2	1,310	4,480	20,543
JUNE	773	917	1,344	21	3,055	1,300		1,300	4,355	24,898
JULY	816	1,025	1,364	12	3,217	1,129	2	1,131	4,348	29,246
AUGUST	821	1,033	1,442	23	3,319	1,562		1,562	4,881	34,127
SEPTEMBER	809	930	1,429	14	3,182	1,184		1,184	4,366	38,493
OCTOBER	872	940	1,074	19	2,905	960	2	962	3,867	42,360
NOVEMBER	775	1,057	1,629	0	3,461	1,309	0	1,309	4,770	47,130
DECEMBER	757	1,027	1,129	12	2,925	504	0	504	3,429	50,559
TOTALS	9,865	10,939	15,003	170	35,977	14,576	6	14,582	50,559	