

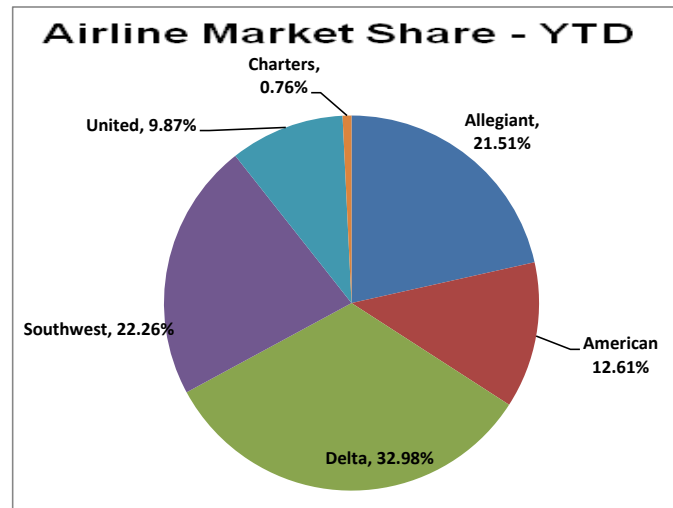
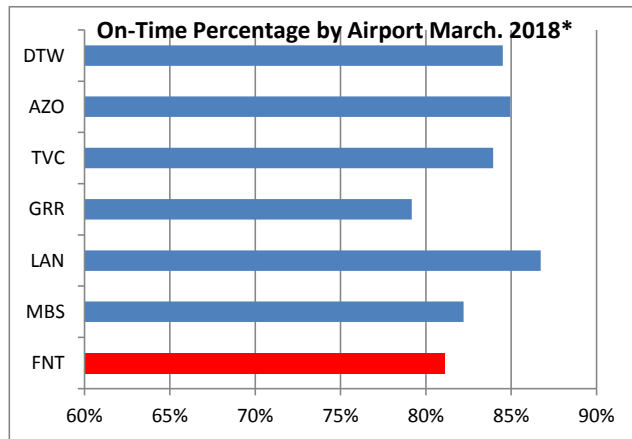
**BISHOP INTERNATIONAL AIRPORT - FNT  
May 2018**

**Schedule Capacity FNT and ALL in June '18 compared to June '17**

Airline	June 2018				June 2017				Percent Diff			LF Diff
	Flights	Seats	Enplane	LF	Flights	Seats	Enplane	LF	Flights	Seats	Enplane	
American	105	5,950	4,528	76.10%	80	4,520	3,621	80.11%	31.25%	31.64%	25.05%	(4.01%)
Delta	162	12,526	11,230	89.65%	170	16,493	13,496	81.83%	(4.71%)	(24.05%)	(16.79%)	7.82%
Allegiant	57	9,586	7,764	80.99%	18	3,055	2,721	89.07%	216.67%	213.78%	185.34%	(8.07%)
Southwest	16	2,288	1,031	45.06%	86	12,286	8,425	68.57%	(81.40%)	(81.38%)	(87.76%)	(23.51%)
United	83	4,150	3,377	81.37%	82	4,100	3,459	84.37%	1.22%	1.22%	(2.37%)	(2.99%)
Charter	0	0	-	N/A	1	152	140	92.11%	(100.00%)	(100.00%)	(100.00%)	#VALUE!
<b>TOTAL</b>	<b>423</b>	<b>34,500</b>	<b>27,930</b>	<b>80.96%</b>	<b>436</b>	<b>40,606</b>	<b>31,862</b>	<b>78.47%</b>	<b>(2.98%)</b>	<b>(15.04%)</b>	<b>(12.34%)</b>	<b>2.49%</b>

**Schedule Capacity FNT and ALL in June '18 to June '16**

Airline	June 2018				June 2016				Percent Diff			LF Diff
	Flights	Seats	Enplane	LF	Flights	Seats	Enplane	LF	Flights	Seats	Enplane	
American	105	5,950	4,528	76.10%	85	4,244	3,801	89.56%	23.53%	40.20%	19.13%	(13.46%)
Delta	162	12,526	11,230	89.65%	173	16,267	12,825	78.84%	(6.36%)	(23.00%)	(12.44%)	10.81%
Allegiant	57	9,586	7,764	80.99%	18	3,087	2,670	89.07%	216.67%	210.53%	190.79%	(16.95%)
Southwest	16	2,288	1,031	45.06%	85	12,149	7,534	62.01%	(81.18%)	(81.17%)	(86.32%)	(16.95%)
United	83	4,150	3,377	81.37%	80	4,000	3,546	88.65%	3.75%	3.75%	(4.77%)	(7.28%)
Charter	0	-	-	N/A	1	162	146	90.12%	(100.00%)	(100.00%)	(100.00%)	#VALUE!
<b>TOTAL</b>	<b>423</b>	<b>34,500</b>	<b>27,930</b>	<b>80.96%</b>	<b>442</b>	<b>39,909</b>	<b>30,522</b>	<b>76.48%</b>	<b>(4.30%)</b>	<b>(13.55%)</b>	<b>(8.49%)</b>	<b>4.48%</b>



\* Most current information available