

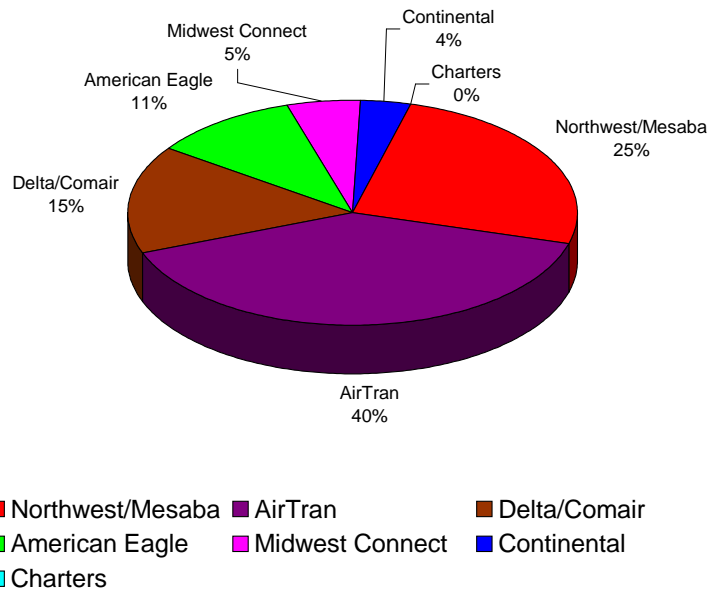
**BISHOP INTERNATIONAL AIRPORT AUTHORITY
AIRLINE PASSENGER COMPARISON
CALENDAR YEARS 2007 AND 2008**

ENPLANEMENTS	NORTHWEST/MESABA			AIRTRAN			DELTA/COMAIR/ASA			AMERICAN EAGLE		
	2007	2008	% Change	2007	2008	% Change	2007	2008	% Change	2007	2008	% Change
January	11,584	12,291	6.10%	19,586	19,049	-2.74%	5,055	6,850	35.51%	3,455	5,916	71.23%
February	13,256	11,684	-11.86%	20,853	23,711	13.71%	5,446	5,909	8.50%	3,185	4,989	56.64%
March	20,531	16,416	-20.04%	22,840	23,928	4.76%	5,952	6,878	15.56%	3,488	5,691	63.16%
April	16,599	12,221	-26.38%	19,438	18,054	-7.12%	5,819	5,984	2.84%	3,598	5,068	40.86%
May	11,994	11,505	-4.08%	15,444	15,312	-0.85%	5,120	5,811	13.50%	5,121	5,066	-1.07%
June	12,309	11,542	-6.23%	15,665	15,362	-1.93%	5,807	6,677	14.98%	5,004	5,416	8.23%
July	12,672	11,752	-7.26%	17,557	16,037	-8.66%	5,800	7,073	21.95%	5,085	6,053	19.04%
August	12,099	10,856	-10.27%	17,795	16,205	-8.94%	5,951	6,833	14.82%	5,080	4,612	-9.21%
September	10,845	8,821	-18.66%	14,536	11,372	-21.77%	6,085	7,118	16.98%	5,935	3,147	-46.98%
October	11,028	8,461	-23.28%	17,086	16,529	-3.26%	6,012	7,939	32.05%	6,325	3,422	-45.90%
November	12,073	8,421	-30.25%	19,301	16,752	-13.21%	6,193	7,154	15.52%	6,427	3,121	-51.44%
December	12,503	10,045	-19.66%	19,882	16,772	-15.64%	5,444	7,564	38.94%	5,836	3,057	-47.62%
Through December	157,493	134,015	-14.91%	219,983	209,083	-4.95%	68,684	81,790	19.08%	58,539	55,558	-5.09%

ENPLANEMENTS	MIDWEST CONNECT			CONTINENTAL			CHARTERS		
	2007	2008	% Change	2007	2008	% Change	2007	2008	% Change
January	1,032	1,640	58.91%	916	1,340	46.29%	122	159	30.33%
February	1,005	1,642	63.38%	1,148	1,497	30.40%	0	0	N/A
March	1,185	2,565	116.46%	1,242	1,751	40.98%	0	0	N/A
April	1,569	2,794	78.08%	1,148	1,780	55.05%	163	159	-2.45%
May	1,518	2,895	90.71%	1,087	1,853	70.47%	0	0	N/A
June	1,770	3,137	77.23%	1,219	1,675	37.41%	0	0	N/A
July	1,927	2,948	52.98%	1,198	1,717	43.32%	0	0	N/A
August	2,271	2,646	16.51%	1,638	1,922	17.34%	0	0	N/A
September	1,816	1,990	9.58%	925	1,438	55.46%	157	0	N/A
October	1,712	1,810	5.72%	1,465	1,401	-4.37%	0	157	N/A
November	1,741	1,626	-6.61%	1,460	1,158	-20.68%	149	0	N/A
December	1,579	2,088	32.24%	1,526	1,575	3.21%	0	0	N/A
Through December	19,125	27,781	45.26%	14,972	19,107	27.62%	591	475	N/A

Latest Stats.	<u>Sep 08</u>	<u>Jan-Sep 08</u>
National avg.	-8.90%	-2.80%
Bishop Airport	-3.93%	1.77%

**ENPLANEMENT SHARE BY AIRLINE
Calendar Year 2008**



	TOTAL		
	2007	2008	% Change
January	41,750	47,245	13.16%
February	44,893	49,432	10.11%
March	55,238	57,229	3.60%
April	48,334	46,060	-4.70%
May	40,284	42,442	5.36%
June	41,774	43,809	4.87%
July	44,239	45,580	3.03%
August	44,834	43,074	-3.93%
September	40,299	33,886	-15.91%
October	43,628	39,719	-8.96%
November	47,344	38,232	-19.25%
December	46,770	41,101	-12.12%
Through December	539,387	527,809	-2.15%
Total Year	539,387	527,809	

**BISHOP INTERNATIONAL AIRPORT AUTHORITY
AIRLINE LOAD FACTOR ANALYSIS**

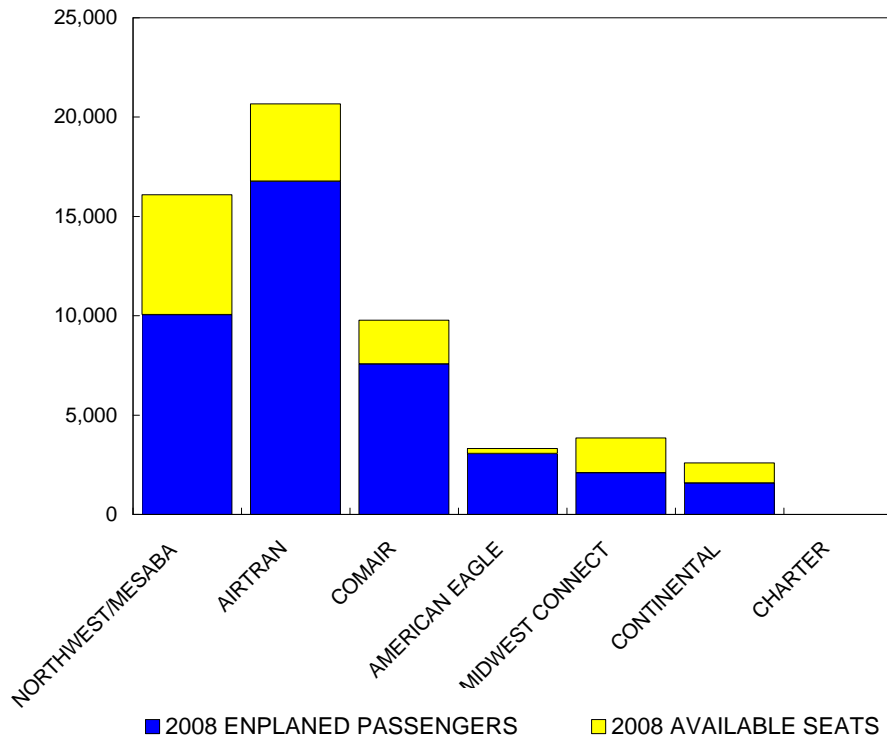
December-08

2007

2008

AIRLINE	AVAILABLE SEATS	ENPLANED PAX	LOAD FACTOR	AVAILABLE SEATS	ENPLANED PAX	LOAD FACTOR
NORTHWEST/MESABA	18,818	12,503	66.44%	16,086	10,045	62.45%
AIRTRAN	26,832	19,882	74.10%	20,672	16,772	81.13%
COMAIR	7,200	5,444	75.61%	9,780	7,564	77.34%
AMERICAN EAGLE	7,197	5,836	81.09%	3,322	3,057	92.02%
MIDWEST CONNECT	2,681	1,579	58.90%	3,850	2,088	54.23%
CONTINENTAL	2,099	1,526	72.70%	2,590	1,575	60.81%
CHARTER	0	0	N/A	0	0	N/A
ALL AIRLINES	64,827	46,770	72.15%	56,300	41,101	73.00%

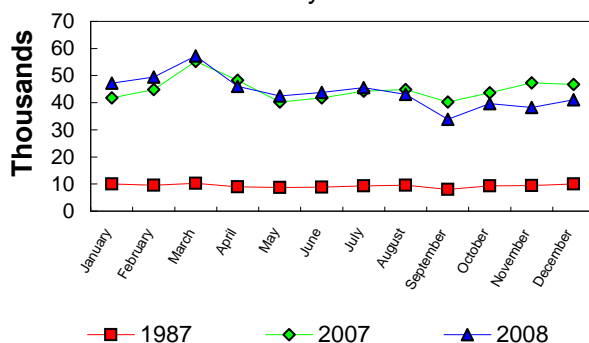
**Enplanements vs Available Seats
Current Month**



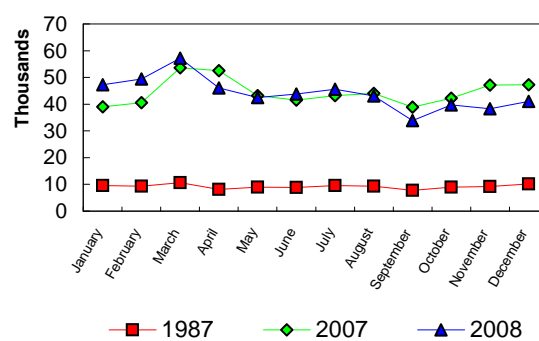
**BISHOP INTERNATIONAL AIRPORT
PASSENGER STATISTICAL COMPARISON
FOR THE YEARS 1987, 2007, 2008**

	ENPLANED PASSENGERS			% CHANGE	% CHANGE
	1987	2007	2008	1987/2008	2007/2008
January	10,008	41,750	47,245	372.07%	13.16%
February	9,544	44,893	49,432	417.94%	10.11%
March	10,287	55,238	57,229	456.32%	3.60%
April	8,967	48,334	46,060	413.66%	-4.70%
May	8,685	40,284	42,442	388.68%	5.36%
June	8,891	41,774	43,809	392.73%	4.87%
July	9,372	44,239	45,580	386.34%	3.03%
August	9,586	44,834	43,074	349.34%	-3.93%
September	8,038	40,299	33,886	321.57%	-15.91%
October	9,350	43,628	39,719	324.80%	-8.96%
November	9,402	47,344	38,232	306.64%	-19.25%
December	10,010	46,770	41,101	310.60%	-12.12%
Total thru December	112,140	539,387	527,809	370.67%	-2.15%
Total for Year	112,140	539,387	527,809		

ENPLANEMENT COMPARISON
Pre-Authority vs 2007 & 2008



DEPLANEMENT COMPARISON
Pre-Authority vs 2007 & 2008



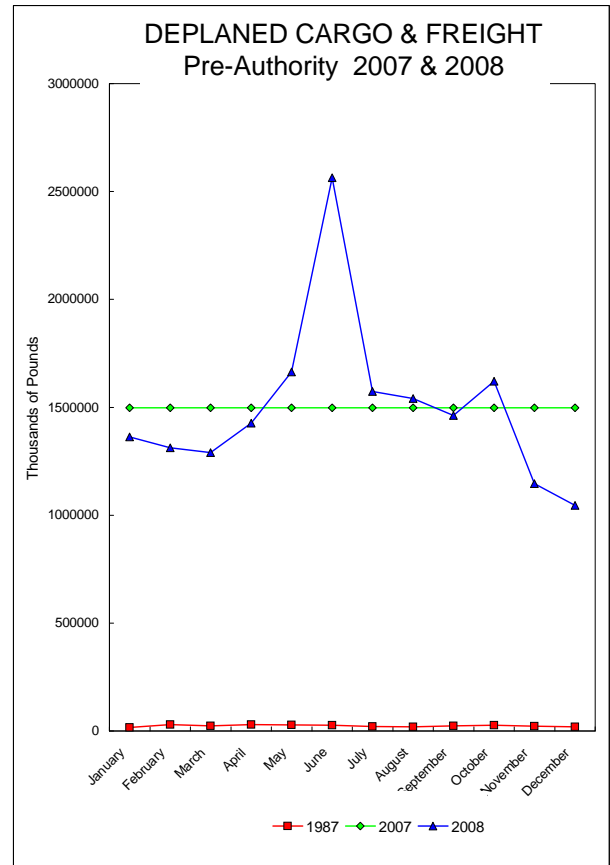
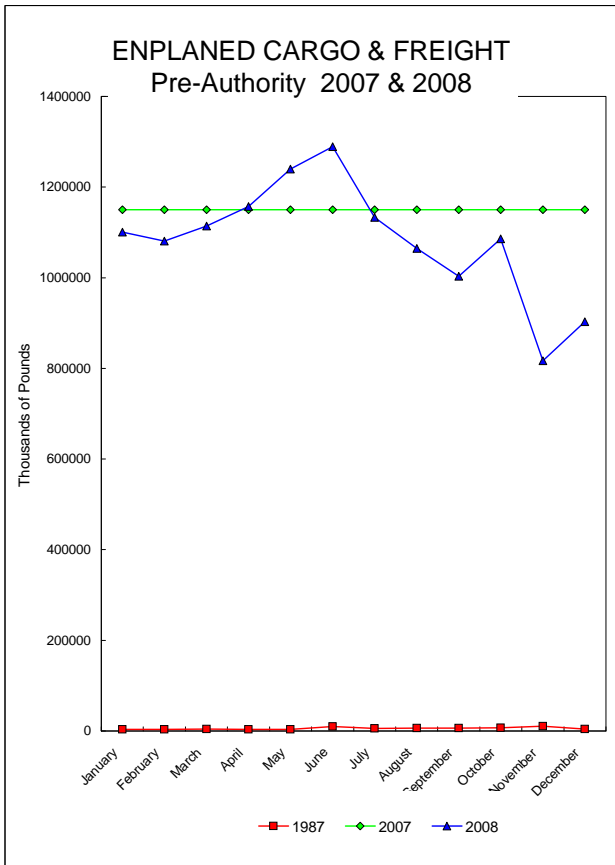
	DEPLANED PASSENGERS			% CHANGE	% CHANGE
	1987	2007	2008	1987/2008	2007/2008
January	9,542	39,038	41,948	339.61%	7.45%
February	9,380	40,531	44,852	378.17%	10.66%
March	10,646	53,615	55,515	421.46%	3.54%
April	8,139	52,500	52,171	541.00%	-0.63%
May	8,969	43,252	46,110	414.10%	6.61%
June	8,795	41,467	43,716	397.06%	5.42%
July	9,592	43,142	45,689	376.32%	5.90%
August	9,331	44,039	42,693	357.54%	-3.06%
September	7,740	38,844	32,667	322.05%	-15.90%
October	9,005	42,190	37,478	316.19%	-11.17%
November	9,235	47,179	38,462	316.48%	-18.48%
December	10,114	47,236	41,703	312.33%	-11.71%
Total thru December	110,488	533,033	523,004	373.36%	-1.88%
Total for Year	110,488	533,033	523,004		

Total all current month	222,628	1,072,420	1,050,813
Total all for the year	222,628	1,072,420	1,050,813

BISHOP INTERNATIONAL AIRPORT AIR CARGO AND FREIGHT COMPARISON Pre-Authority(1987) 2007 & 2008

TOTAL AIR CARGO AND FREIGHT

	ENPLANED CARGO & FREIGHT			% Change 87-2008	% Change 2007-2008	DEPLANED CARGO & FREIGHT			% Change 87-2008	% Change 2007-2008
	1987	2007	2008			1987	2007	2008		
January	3,660	1,149,961	1,100,987	29981.61%	-4.26%	16,557	1,498,387	1,362,603	8129.77%	-9.06%
February	3,582	1,149,961	1,080,738	30071.36%	-6.02%	30,397	1,498,387	1,312,330	4217.30%	-12.42%
March	4,268	1,149,961	1,114,173	26005.27%	-3.11%	23,013	1,498,387	1,290,406	5507.29%	-13.88%
April	3,747	1,149,961	1,167,137	30781.69%	0.62%	30,094	1,498,387	1,426,201	4639.15%	-4.82%
May	3,219	1,149,961	1,239,693	38411.74%	7.80%	28,459	1,498,387	1,663,538	5745.38%	11.02%
June	9,901	1,149,961	1,289,325	12922.17%	12.12%	27,135	1,498,387	2,564,605	9351.28%	71.16%
July	5,316	1,149,961	1,133,001	21213.04%	-1.47%	21,325	1,498,387	1,573,163	7277.08%	4.99%
August	6,299	1,149,961	1,064,939	16806.48%	-7.39%	19,064	1,498,387	1,540,210	7979.15%	2.79%
September	6,509	1,149,961	1,003,008	15309.56%	-12.78%	23,494	1,498,387	1,462,871	6126.57%	-2.37%
October	7,148	1,149,961	1,085,746	15089.51%	-5.58%	26,707	1,498,387	1,620,352	5967.14%	8.14%
November	10,254	1,149,961	816,594	7863.66%	-28.99%	22,817	1,498,387	1,146,640	4925.38%	-23.48%
December	3,905	1,149,961	903,172	23028.60%	-21.46%	19,423	1,498,387	1,045,282	5281.67%	-30.24%
Total thru December	67,808	14,401,159	12,988,513	19054.84%	-9.81%	269,062	19,817,250	18,008,201	6592.96%	-9.13%
Annual Total	67,808	13,799,532	12,988,513			288,485	17,980,644	18,008,201		



FEDEX

	ENPLANED CARGO & FREIGHT					DEPLANED CARGO & FREIGHT				
	1987	2007	2008	% Change 87-2008	% Change 2007-2008	1987	2007	2008	% Change 87-2008	% Change 2007-2008
January	0	830,801	870,732	N/A	4.81%	0	1,032,796	976,067	N/A	-5.49%
February	0	821,951	839,826	N/A	2.17%	0	1,061,573	986,041	N/A	-7.12%
March	0	988,429	832,812	N/A	-15.74%	0	1,370,078	966,259	N/A	-29.47%
April	0	859,143	902,615	N/A	5.06%	0	1,040,545	1,041,227	N/A	0.07%
May	0	956,377	887,145	N/A	-7.24%	0	1,154,671	1,025,009	N/A	-11.23%
June	0	890,057	850,739	N/A	-4.42%	0	1,151,579	1,020,445	N/A	-11.39%
July	0	844,611	832,637	N/A	-1.42%	0	1,070,546	1,081,087	N/A	0.98%
August	0	973,712	774,265	N/A	-20.48%	0	1,297,061	1,065,428	N/A	-17.86%
September	0	853,949	715,516	N/A	-16.21%	0	1,154,353	994,570	N/A	-13.84%
October	0	954,218	824,642	N/A	-13.58%	0	1,255,642	1,109,449	N/A	-11.64%
November	0	839,661	667,959	N/A	-20.45%	0	1,088,713	866,734	N/A	-20.39%
December	0	770,507	841,807	N/A	9.25%	0	1,133,242	1,029,399	N/A	-9.16%
Total thru December	0	10,583,416	9,840,695	N/A	-7.02%	0	13,810,799	12,161,715	N/A	-11.94%

GVA

	ENPLANED CARGO & FREIGHT					DEPLANED CARGO & FREIGHT				
	1987	2007	2008	% Change 87-2008	% Change 2007-2008	1987	2007	2008	% Change 87-2008	% Change 2007-2008
January	0	490	40	N/A	-91.84%	0	3,569	0	N/A	N/A
February	0	11,543	8,976	N/A	N/A	0	53,740	2,060	N/A	N/A
March	0	6,094	1,008	N/A	-83.46%	0	40,990	31	N/A	N/A
April	0	1,150	1,793	N/A	55.91%	0	6,267	0	N/A	N/A
May	0	3,288	95,081	N/A	2791.76%	0	26,052	231,046	N/A	786.86%
June	0	18,727	129,326	N/A	590.59%	0	10,546	1,074,485	N/A	10088.55%
July	0	35	0	N/A	N/A	0	17,850	0	N/A	N/A
August	0	2,405	250	N/A	-89.60%	0	49,271	6,220	N/A	-87.38%
September	0	1,644	11,748	N/A	614.60%	0	39,528	10,000	N/A	-74.70%
October	0	16,988	10	N/A	-99.94%	0	3,588	0	N/A	N/A
November	0	7,067	0	N/A	N/A	0	0	0	N/A	N/A
December	0	0	3,910	N/A	N/A	0	1,822	0	N/A	N/A
Total thru December	0	69,431	252,142	N/A	263.15%	0	253,223	1,323,842	N/A	422.80%

AIRBORNE

	ENPLANED CARGO & FREIGHT					DEPLANED CARGO & FREIGHT				
	1987	2007	2008	% Change 87-2008	% Change 2007-2008	1987	2007	2008	% Change 87-2008	% Change 2007-2008
January	0	283,934	158,619	N/A	-44.14%	0	448,441	360,700	N/A	-19.57%
February	0	283,892	153,865	N/A	-45.80%	0	445,594	294,741	N/A	-33.85%
March	0	335,696	201,341	N/A	-40.02%	0	532,497	298,884	N/A	-43.87%
April	0	270,953	169,401	N/A	-37.48%	0	476,437	357,939	N/A	-24.87%
May	0	280,286	159,640	N/A	-43.04%	0	507,390	380,323	N/A	-25.04%
June	0	312,803	246,821	N/A	-21.09%	0	483,297	445,463	N/A	-7.83%
July	0	261,917	239,609	N/A	-8.52%	0	443,037	467,483	N/A	5.52%
August	0	289,595	231,286	N/A	-20.13%	0	499,704	445,980	N/A	-10.75%
September	0	240,733	219,903	N/A	-8.65%	0	499,383	432,950	N/A	-13.30%
October	0	177,074	194,008	N/A	9.56%	0	399,428	476,602	N/A	19.32%
November	0	159,861	96,999	N/A	-39.32%	0	379,896	260,875	N/A	-31.33%
December	0	157,741	0	N/A	N/A	0	370,556	0	N/A	N/A
Total thru December	0	3,054,485	2,071,492	N/A	-32.18%	0	5,485,660	4,221,940	N/A	-23.04%

AMERICAN EAGLE

	ENPLANED CARGO & FREIGHT					DEPLANED CARGO & FREIGHT				
	1987	2007	2008	% Change 87-2008	% Change 2007-2008	1987	2007	2008	% Change 87-2008	% Change 2007-2008
January	0	7	258	N/A	N/A	0	134	77	N/A	N/A
February	0	0	7	N/A	N/A	0	254	166	N/A	N/A
March	0	0	172	N/A	N/A	0	195	100	N/A	N/A
April	0	0	123	N/A	N/A	0	295	34	N/A	N/A
May	0	0	28	N/A	N/A	0	0	53	N/A	N/A
June	0	0	77	N/A	N/A	0	367	51	N/A	N/A
July	0	43	46	N/A	N/A	0	0	35	N/A	N/A
August	0	0	44	N/A	N/A	0	0	44	N/A	N/A
September	0	26	43	N/A	N/A	0	168	14	N/A	N/A
October	0	227	54	N/A	N/A	0	0	83	N/A	N/A
November	0	38	54	N/A	N/A	0	11	117	N/A	N/A
December	0	16	45	N/A	N/A	0	9	2	N/A	N/A
Total thru December	0	357	951	N/A	N/A	0	1,433	776	N/A	N/A

NORTHWEST (MESABA)

	ENPLANED CARGO & FREIGHT					DEPLANED CARGO & FREIGHT				
	1987	2007	2008	% Change 87-2008	% Change 2007-2008	1987	2007	2008	% Change 87-2008	% Change 2007-2008
January	120	180	101	-15.83%	-43.89%	837	659	67	-92.00%	-89.83%
February	310	433	205	-33.87%	-52.66%	1,649	189	240	-85.45%	26.98%
March	256	284	267	4.30%	-5.99%	2,098	1,117	43	-97.95%	-96.15%
April	0	205	231	N/A	12.68%	0	1,580	89	N/A	-94.37%
May	0	119	198	N/A	66.39%	0	121	179	N/A	47.93%
June	0	391	87	N/A	-77.75%	0	133	102	N/A	-23.31%
July	0	5	129	N/A	2480.00%	0	42	140	N/A	233.33%
August	0	122	98	N/A	-19.67%	0	283	623	N/A	120.14%
September	0	363	409	N/A	12.67%	0	591	192	N/A	-67.51%
October	0	17	74	N/A	335.29%	0	201	162	N/A	-19.40%
November	0	136	276	N/A	102.94%	0	194	7	N/A	-96.39%
December	0	74	133	N/A	79.73%	0	245	12	N/A	-95.10%
Total thru December	686	2,329	2,208	221.87%	-5.20%	4,584	5,355	1,856	-59.51%	-65.34%

MIDWEST CONNECT

	ENPLANED CARGO & FREIGHT					DEPLANED CARGO & FREIGHT				
	1987	2007	2008	% Change 87-2008	% Change 2007-2008	1987	2007	2008	% Change 87-2008	% Change 2007-2008
January	0	0	0	N/A	N/A	0	15	500	N/A	3233.33%
February	0	0	0	N/A	N/A	0	530	846	N/A	59.62%
March	0	0	0	N/A	N/A	0	13	249	N/A	1815.38%
April	0	0	0	N/A	N/A	0	788	588	N/A	-25.38%
May	0	0	0	N/A	N/A	0	322	77	N/A	-76.09%
June	0	0	0	N/A	N/A	0	595	83	N/A	-86.05%
July	0	0	0	N/A	N/A	0	415	133	N/A	-67.95%
August	0	0	0	N/A	N/A	0	499	181	N/A	-63.73%
September	0	0	0	N/A	N/A	0	200	86	N/A	-57.00%
October	0	0	0	N/A	N/A	0	350	0	N/A	N/A
November	0	0	0	N/A	N/A	0	570	100	N/A	N/A
December	0	0	0	N/A	N/A	0	188	0	N/A	N/A
Total thru December	0	0	0	N/A	N/A	0	4,485	2,843	N/A	-36.61%

EAGLE AIR CARGO

	ENPLANED CARGO & FREIGHT					DEPLANED CARGO & FREIGHT				
	1987	2007	2008	% Change 87-2008	% Change 2007-2008	1987	2007	2008	% Change 87-2008	% Change 2007-2008
January	0	0	19977	N/A	N/A	0	0	8,298	N/A	N/A
February	0	0	25942	N/A	N/A	0	0	10,234	N/A	N/A
March	0	0	24500	N/A	N/A	0	0	6,612	N/A	N/A
April	0	0	29470	N/A	N/A	0	0	8,328	N/A	N/A
May	0	0	39216	N/A	N/A	0	0	9,346	N/A	N/A
June	0	0	0	N/A	N/A	0	0	0	N/A	N/A
July	0	0	0	N/A	N/A	0	0	0	N/A	N/A
August	0	0	0	N/A	N/A	0	0	0	N/A	N/A
September	0	6765	0	N/A	N/A	0	2,816	0	N/A	N/A
October	0	27136	0	N/A	N/A	0	10,334	0	N/A	N/A
November	0	24204	0	N/A	N/A	0	8,287	0	N/A	N/A
December	0	31666	0	N/A	N/A	0	12,673	0	N/A	N/A
Total thru December	0	89,771	139,105	N/A	N/A	0	34,110	42,818	N/A	N/A

CSA Air, Inc.

	ENPLANED CARGO & FREIGHT					DEPLANED CARGO & FREIGHT				
	1987	2007	2008	% Change 87-2008	% Change 2007-2008	1987	2007	2008	% Change 87-2008	% Change 2007-2008
January	0	34,549	51,260	N/A	48.37%	0	12,773	16,894	N/A	32.26%
February	0	34,424	51,917	N/A	50.82%	0	15,123	18,002	N/A	19.04%
March	0	35,784	54,073	N/A	51.11%	0	14,400	18,228	N/A	26.58%
April	0	35,737	53,504	N/A	49.72%	0	14,485	17,996	N/A	24.24%
May	0	41,818	58,385	N/A	39.62%	0	16,239	17,505	N/A	7.80%
June	0	67,001	62,080	N/A	-7.34%	0	24,699	23,976	N/A	-2.93%
July	0	59,178	60,580	N/A	2.37%	0	18,597	24,285	N/A	30.59%
August	0	66,681	58,839	N/A	-11.76%	0	24,942	21,734	N/A	-12.86%
September	0	53,291	55,259	N/A	3.69%	0	19,300	25,059	N/A	29.84%
October	0	55,917	66,720	N/A	19.32%	0	20,227	34,056	N/A	68.37%
November	0	52,952	51,247	N/A	-3.22%	0	20,775	18,807	N/A	-9.47%
December	0	64,038	57,158	N/A	-10.74%	0	16,306	15,869	N/A	-2.68%
Total thru December	0	601,370	681,022	N/A	13.25%	0	217,866	252,411	N/A	15.86%

AIRTRAN

	ENPLANED CARGO & FREIGHT			% Change	% Change	DEPLANED CARGO & FREIGHT			% Change	% Change
	1987	2007	2008	87-2008	2007-2008	1987	2007	2008	87-2008	2007-2008
January	0	0	0	N/A	N/A	0	0	0	N/A	N/A
February	0	0	0	N/A	N/A	0	0	0	N/A	N/A
March	0	0	0	N/A	N/A	0	0	0	N/A	N/A
April	0	0	0	N/A	N/A	0	0	0	N/A	N/A
May	0	0	0	N/A	N/A	0	0	0	N/A	N/A
June	0	0	0	N/A	N/A	0	0	0	N/A	N/A
July	0	0	0	N/A	N/A	0	0	0	N/A	N/A
August	0	0	0	N/A	N/A	0	0	0	N/A	N/A
September	0	0	0	N/A	N/A	0	0	0	N/A	N/A
October	0	0	0	N/A	N/A	0	0	0	N/A	N/A
November	0	0	0	N/A	N/A	0	0	0	N/A	N/A
December	0	0	0	N/A	N/A	0	0	0	N/A	N/A
Total thru December	0	0	0	N/A	N/A	0	0	0	N/A	N/A

PRIOR CARRIERS

	ENPLANED CARGO & FREIGHT			% Change	% Change	DEPLANED CARGO & FREIGHT			% Change	% Change
	1987	2007	2008	87-2008	2007-2008	1987	2007	2008	87-2008	2007-2008
January	3,540	0	0	N/A	N/A	15,720	0	0	N/A	N/A
February	3,272	0	0	N/A	N/A	28,748	0	0	N/A	N/A
March	4,012	0	0	N/A	N/A	20,915	0	0	N/A	N/A
April	3,747	0	0	N/A	N/A	30,094	0	0	N/A	N/A
May	3,219	0	0	N/A	N/A	28,459	0	0	N/A	N/A
June	9,901	0	195	-98.03%	N/A	27,135	0	0	N/A	N/A
July	5,316	300	0	N/A	N/A	21,325	4,319	0	N/A	N/A
August	6,299	0	157	-97.51%	N/A	19,064	0	0	N/A	N/A
September	6,509	0	130	-98.00%	N/A	23,494	0	0	N/A	N/A
October	7,148	0	238	-96.67%	N/A	26,707	0	0	N/A	N/A
November	10,254	0	59	-0.99424615	N/A	22,817	0	0	N/A	N/A
December	3,905	0	119	-0.96952625	N/A	19,423	0	0	N/A	N/A
Total thru December	67,122	300	898	N/A	N/A	264,478	4,319	0	N/A	N/A

OPERATIONS STATISTICAL COMPARISON

FOR YEARS 1987, 2007 & 2008

	1987 OPERATIONS	2007 OPERATIONS	2008 OPERATIONS	CHANGE 1987/2008	CHANGE 2007/2008
January	8,177	4,383	4,961	-39.33%	13.19%
February	10,270	4,050	4,491	-56.27%	10.89%
March	10,677	6,672	5,784	-45.83%	-13.31%
April	9,562	5,732	6,307	-34.04%	10.03%
May	10,870	6,763	5,611	-48.38%	-17.03%
June	11,514	7,642	5,033	-56.29%	-34.14%
July	11,296	7,618	6,096	-46.03%	-19.98%
August	10,240	8,382	4,965	-51.51%	-40.77%
September	10,389	7,591	5,050	-51.39%	-33.47%
October	9,656	6,734	5,651	-41.48%	-16.08%
November	7,592	5,804	4,273	-43.72%	-26.38%
December	6,608	4,399	2,660	-59.75%	-39.53%
Total Through December	116,851	75,770	60,882	-47.90%	-19.65%
ANNUAL TOTAL	116,851	75,770	60,882		

OPERATIONS Pre-Authority vs 2007 & 2008

