

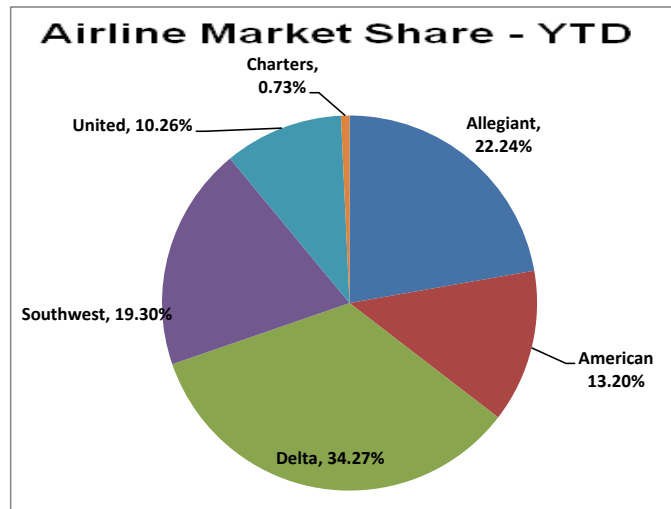
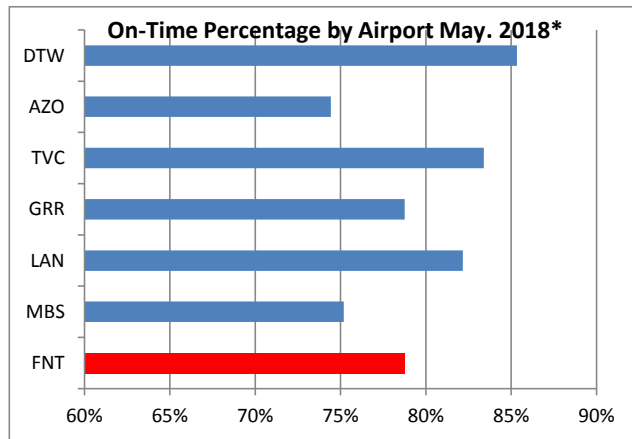
**BISHOP INTERNATIONAL AIRPORT - FNT
July 2018**

Schedule Capacity

Airline	July 2018				July 2017				Percent Diff			LF Diff
	Flights	Seats	Enplane	LF	Flights	Seats	Enplane	LF	Flights	Seats	Enplane	
American	111	6,130	5,067	82.66%	88	5,020	3,883	77.35%	26.14%	22.11%	30.49%	5.31%
Delta	164	13,142	12,673	96.43%	163	16,565	14,341	86.57%	0.61%	(20.66%)	(11.63%)	9.86%
Allegiant	57	9,686	8,021	82.81%	18	3,087	2,858	92.58%	216.67%	213.77%	180.65%	(9.77%)
Southwest	0	0	-	#DIV/0!	88	12,584	10,469	83.19%	(100.00%)	(100.00%)	(100.00%)	#DIV/0!
United	87	4,350	3,802	87.40%	75	3,750	3,332	88.85%	16.00%	16.00%	14.11%	(1.45%)
Charter	1	162	161	99.38%	0	0	-	N/A				N/A
TOTAL	420	33,470	29,724	88.81%	432	41,006	34,883	85.07%	(2.78%)	(18.38%)	(14.79%)	3.74%

Schedule Capacity

Airline	July 2018				July 2016				Percent Diff			LF Diff
	Flights	Seats	Enplane	LF	Flights	Seats	Enplane	LF	Flights	Seats	Enplane	
American	111	6,130	5,067	82.66%	81	4,044	3,662	90.55%	37.04%	51.58%	38.37%	(7.89%)
Delta	164	13,142	12,673	96.43%	172	17,114	14,276	83.42%	(4.65%)	(23.21%)	(11.23%)	13.01%
Allegiant	57	9,686	8,021	82.81%	18	3,087	2,833	92.58%	216.67%	213.77%	183.13%	
Southwest	0	-	-	#DIV/0!	91	13,013	9,565	73.50%	(100.00%)	(100.00%)	(100.00%)	#DIV/0!
United	87	4,350	3,802	87.40%	106	5,300	4,096	77.28%	(17.92%)	(17.92%)	(7.18%)	10.12%
Charter	1	162	161	99.38%	0	0	-	N/A				N/A
TOTAL	420	33,470	29,724	88.81%	468	42,558	34,432	80.91%	(10.26%)	(21.35%)	(13.67%)	7.90%



* Most current information available